

West

Menandrou 13, Peristeri





Project Description

The project is located in the southwest part of Athens close to metro station in a quiet and sparsely populated area.

Peristeri, the country's fourth largest municipality, has continued to evolve over the years, covering all needs, whether visited on weekdays or weekends, concerning dining, shopping, sports, cultural events and, above all, engaging with interesting people in a vibrant scene.

The building extends into seven levels offering five 1-bedroom apartments and one 1-bedroom maisonette.





Energy Efficiency

A+



Heating

Heat Pumps



Sanitary Ware

Grohe



Kitchens

European



Photovoltaics

On the roof top



Sockets for Charging

Ideal for Electrical Cars



Delivery

1st Quarter 2026



Unit Number

Level

Type

Internal Area

Balconies/
Exclusive Use

Total

Bedrooms

Bathrooms

Parking

Storage

1.1	1	Apartment	50.70	15.40	66.10	1	1	YES	N/A
2.1	2	Apartment	50.70	15.40	66.10	1	1	YES	N/A
3.1	3	Apartment	50.70	15.40	66.10	1	1	N/A	N/A
4.1	4	Apartment	50.70	15.40	66.10	1	1	N/A	N/A
5.1	5	Apartment	50.70	16.40	67.10	1	1	N/A	N/A
M.1	6 & 7	Maisonette	38.50 + 22.50 = 61.00	27.40	88.40	1	2	YES	N/A

FIRST LEVEL

APT 1.1



APT 1.1

FIRST LEVEL





MENANDROU 13, PERISTERI



MENANDROU Str

1,2,3,4 LEVELS







SECOND LEVEL

APT 2.1



APT 2.1

SECOND LEVEL





MENANDROU 13, PERISTERI



MENANDROU Str

1,2,3,4 LEVELS







THIRD LEVEL

APT 3.1



APT 3.1

THIRD LEVEL



MENANDROU 13, PERISTERI



MENANDROU Str

1,2,3,4 LEVELS







FOURTH LEVEL

APT 4.1



APT 4.1

FOURTH LEVEL



MENANDROU 13, PERISTERI



MENANDROU Str

1,2,3,4 LEVELS







FIFTH LEVEL

APT 5.1



APT 5.1

FIFTH LEVEL



MENANDROU 13, PERISTERI



MENANDROU Str

5 LEVEL







Elliott Erwitt Snaps

Dior



WALTER FINANCE

WALTER FINANCE

M U

M

SIXTH & SEVENTH LEVEL

MAIS M.1



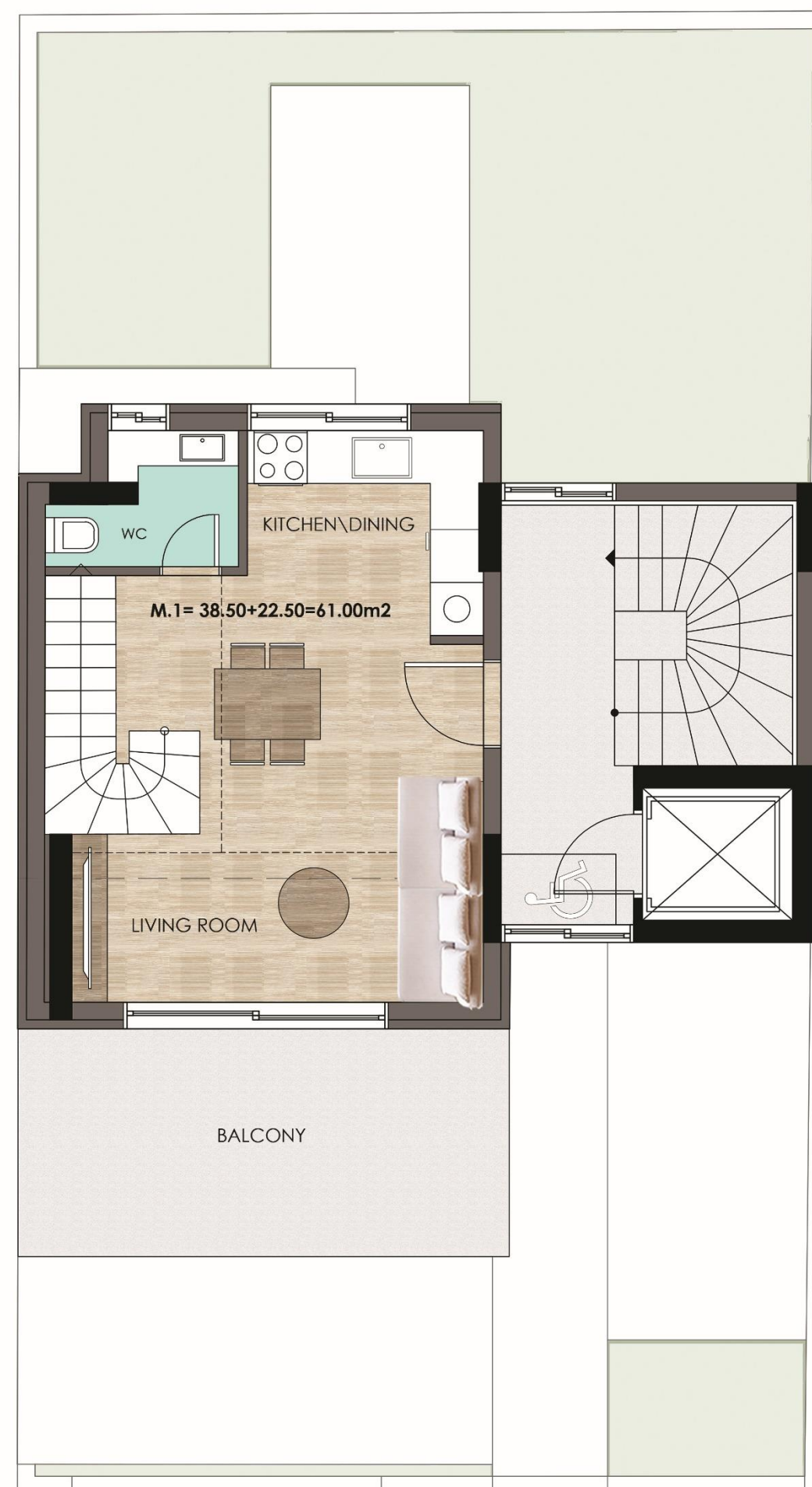
MAIS M.1

SIXTH & SEVENTH LEVEL





MENANDROU 13, PERISTERI



MENANDROU Str

6 LEVEL

MENANDROU 13, PERISTERI



MENANDROU Str

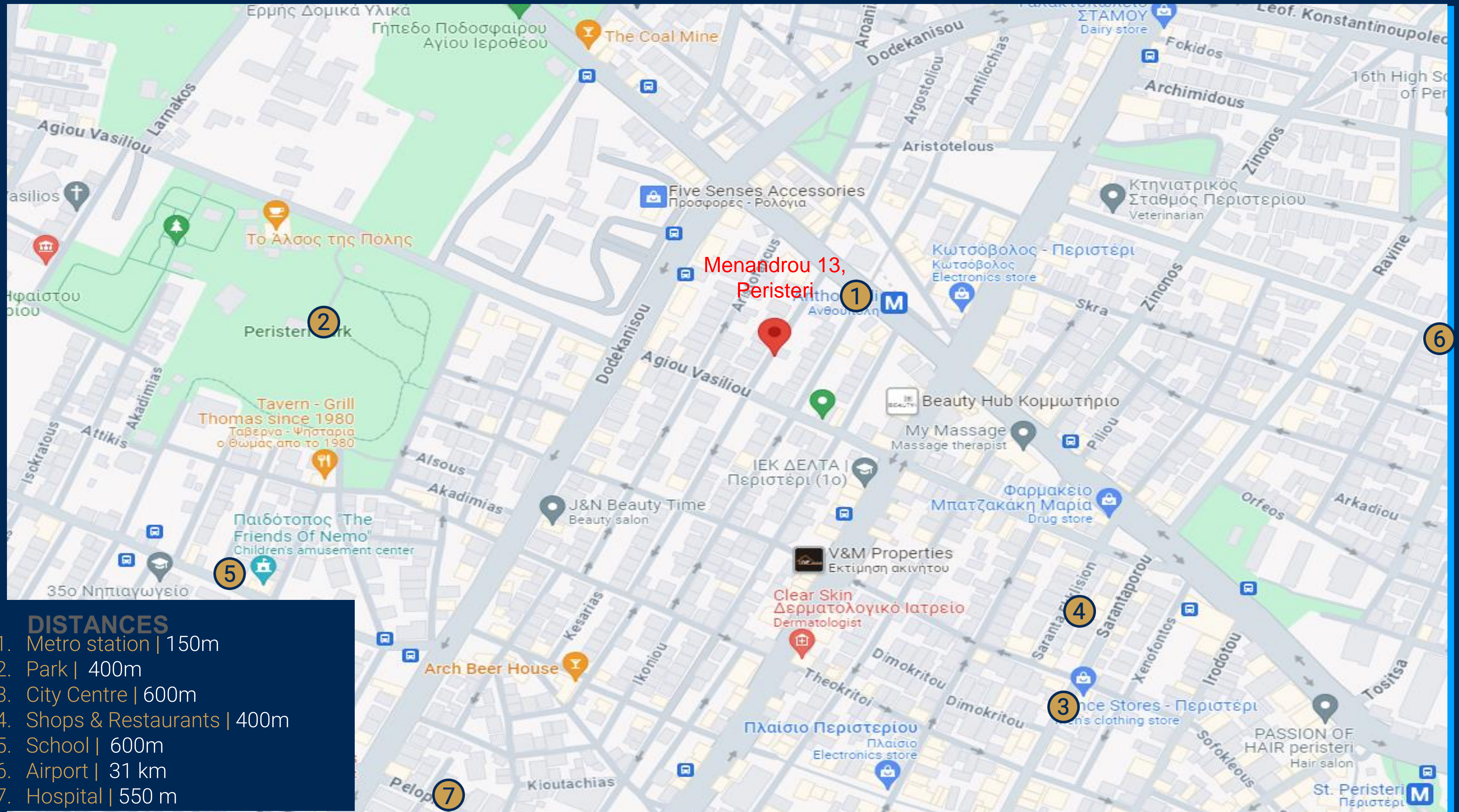
7 LEVEL











DISTANCES

1. Metro station | 150m
2. Park | 400m
3. City Centre | 600m
4. Shops & Restaurants | 400m
5. School | 600m
6. Airport | 31 km
7. Hospital | 550 m



THANK YOU