

South

Filonos 47, Piraeus





Project Description

The project is located in Piraeus in a quiet and sparsely populated area.

Piraeus is the largest Mediterranean port in terms of passenger traffic and commercial activity, and most of Athens' visitors simply consider it a transit point to the Aegean islands.

A coastal walk from the metro station will take you along the harbour, past the lion statue at its entrance and the Naval Academy further down and onwards to Peiraiki and Zea Marina, finishing off at the picturesque Mikrolimano.

The famous factory of “Lipasmata Drapetsonas” – has been turned into a park. This park overlooks the sea and the entrance of the port where you can watch the big ships entering the port.

The building extends into six levels offering five (one) bedroom apartments and one (one) bedroom maisonette.





Energy Efficiency

A+



Heating

Heat Pumps



Sanitary Ware

Grohe



Kitchens

Italian



Photovoltaics

On the roof top



Sockets for Charging

Ideal for Electrical Cars



Delivery

4th Quarter 2025











Unit Number	Level	Internal Area	Balconies	Bedrooms	Bathrooms	Parking	Storage
K1 SEA VIEW - STORE	0 & 1	27+41=68	13			NO	N/A
1.2 SEA VIEW	1	47.2	13	1	1	NO	N/A
1.3 SEA VIEW	1	43.2	12	1	1	NO	N/A
2.1 SEA VIEW	2	45.7	12	1	1	NO	N/A
2.2 SEA VIEW	2	46.6	12	1	1	NO	N/A
2.3 SEA VIEW	2	43.2	12	1	1	NO	N/A
3.1 SEA VIEW	3	45.7	12	1	1	NO	N/A
3.2 SEA VIEW	3	46.6	12	1	1	NO	N/A
3.3 SEA VIEW	3	43.2	12	1	1	NO	N/A
4.1 SEA VIEW	4	45.7	12	1	1	NO	N/A
4.2 SEA VIEW	4	46.6	12	1	1	NO	N/A
4.3 SEA VIEW	4	43.2	12	1	1	NO	N/A

Sqm measurements may vary up to ± 3%



Unit Number	Level	Internal Area	Balconies	Bedrooms	Bathrooms	Parking	Storage
5.1 SEA VIEW	5	45.7	12	1	1	NO	N/A
5.2 SEA VIEW	5	46.6	12	1	1	NO	N/A
5.3 SEA VIEW	5	43.2	12	1	1	NO	N/A
6.1 SEA VIEW	6	45.7	12	1	1	NO	N/A
6.2 SEA VIEW	6	46.6	12	1	1	NO	N/A
6.3 SEA VIEW	6	43.2	12	1	1	NO	N/A
7.1 SEA VIEW	7	45.7	12	1	1	NO	N/A
7.2 SEA VIEW	7	46.6	12	1	1	NO	N/A
7.3 SEA VIEW	7	43.2	12	1	1	NO	N/A
8.1 SEA VIEW	8	45.7	12	1	1	NO	N/A
8.2 SEA VIEW	8	46.6	12	1	1	NO	N/A
8.3 SEA VIEW	8	43.2	12	1	1	NO	N/A

Sqm measurements may vary up to ± 3%



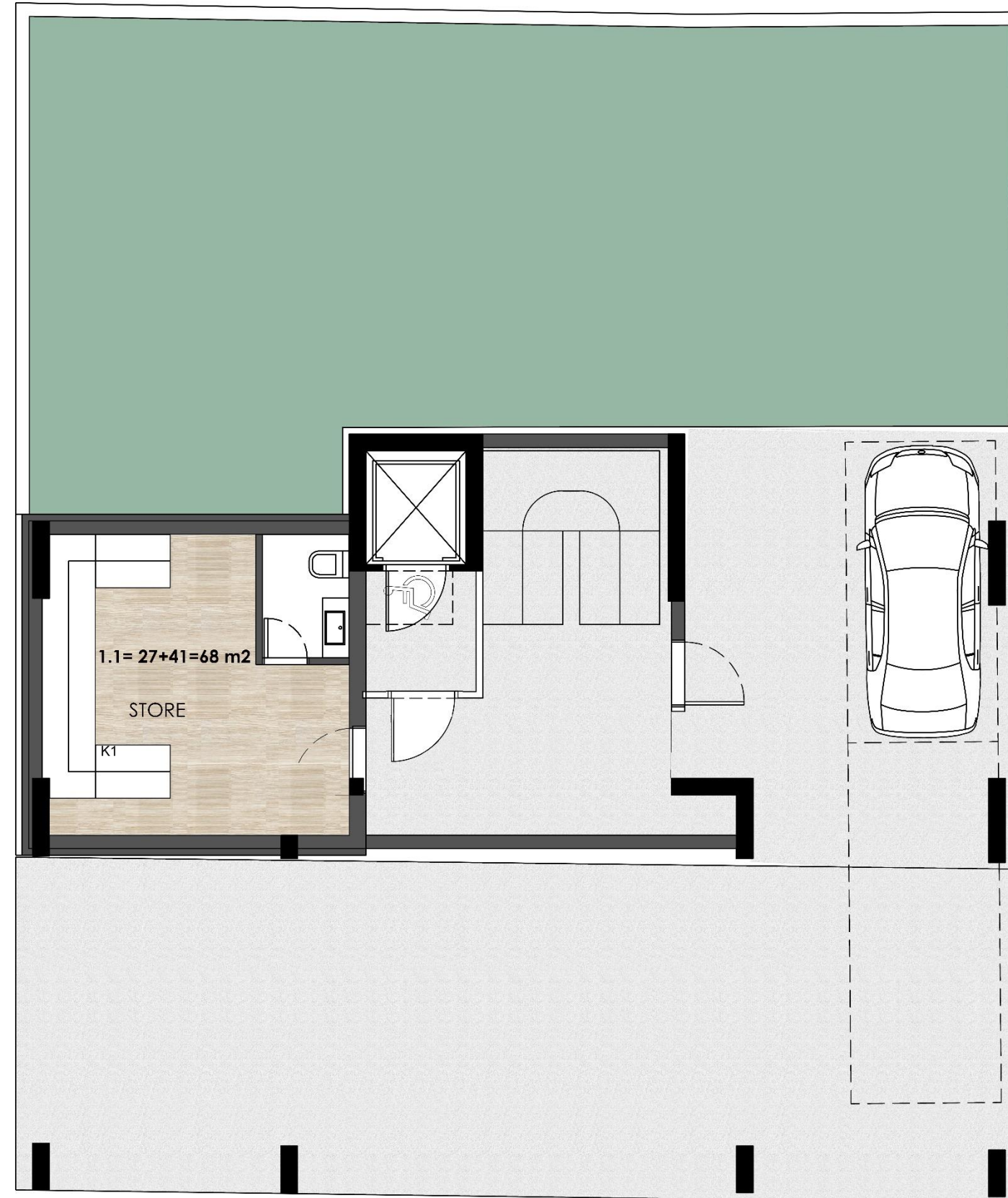
Unit Number	Level	Internal Area	Balconies	Bedrooms	Bathrooms	Parking	Storage
9.1 SEA VIEW	9	45.7	12	1	1	NO	N/A
9.2 SEA VIEW	9	46.6	12	1	1	NO	N/A
9.3 SEA VIEW	9	43.20	12	1	1	NO	N/A
10.1 SEA VIEW	10	44.7	22	1	1	NO	N/A
10.2 SEA VIEW	10	44.7	22	1	1	NO	N/A
10.3 SEA VIEW	10	23.6	15	1	1	NO	N/A
11.1 SEA VIEW	11	24	18	1	1	NO	N/A

Sqm measurements may vary up to ± 3%

0 LEVEL FLOORPLAN



FILWNOS 47, PEIRAIAS



FILWNOS str.
0 st LEVEL

1ST LEVEL FLOORPLAN



FILWNOS 47, PEIRAIAS



FILWNOS str.
1 st LEVEL

2nd – 9th LEVEL FLOORPLAN



FILWNOS 47, PEIRAIAS

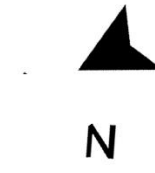


FILWNOS str.
2,3,4,5,6,7,8,9 st LEVEL

10th LEVEL FLOORPLAN



FILWNOS 47, PEIRAIAS



FILWNOS str.
10 st LEVEL

11th LEVEL FLOORPLAN



FILWNOS 47, PEIRAIAS



FILWNOS str.
11 st LEVEL

APARTMENT'S INTERIOR

K1,1.2-2.2-3.2-4.2-5.2-6.2-7.2-8.2-9.2-A,b,c









APARTMENT'S INTERIOR

1.3-2.3-3.3-4.3-5.3-6.3-7.3-8.3-9.3-A,b,c









APARTMENT's INTERIOR

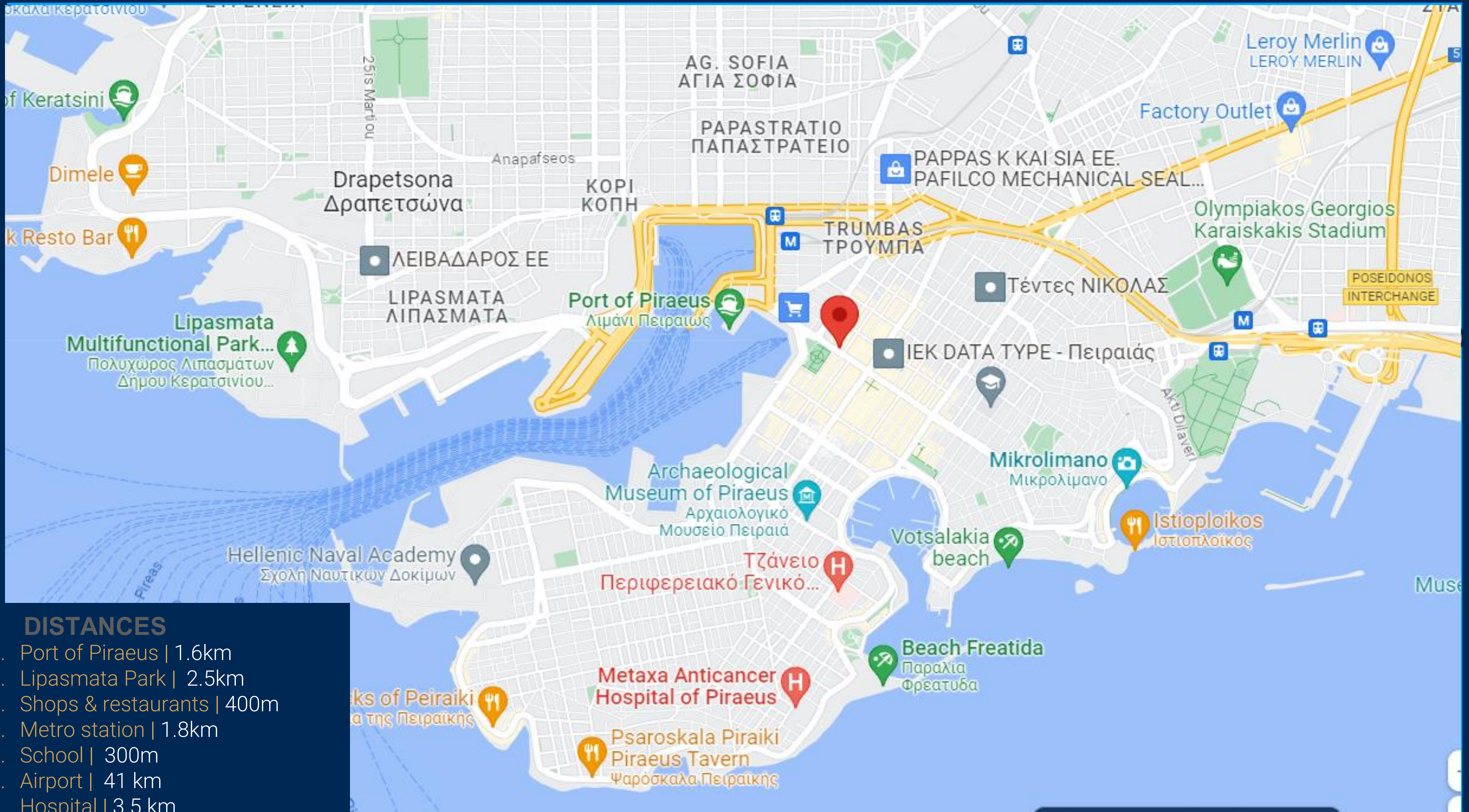
2.1-3.1-4.1-5.1-6.1-7.1-8.1-9.1-A,b,c











DISTANCES

1. Port of Piraeus | 1.6km
2. Lipasmata Park | 2.5km
3. Shops & restaurants | 400m
4. Metro station | 1.8km
5. School | 300m
6. Airport | 41 km
7. Hospital | 3.5 km



THANK YOU