

SOUTH

Ithomis & Gramvousis, Glyfada





Project Description

The project is located in the southern part of Athens in the quiet populated residential area of Glyfada .The building expands into five floors offering ground floor apartments, maisonettes and apartments with sea view. Elongated balconies are located to the east and west side with large openings for easy access to both areas, inside and out. Its distinct and unique architectural design promotes the impression of harmony and balance due to its characteristic composition of cleverly positioned horizontal and vertical structural overlays creating sense of serenity and calmness. The sculpted segments projecting from the sides of the building combined with the glass veneers appear to be detached from the structure



Energy Efficiency

A+



Heating

Heat Pumps



Sanitary Ware

Grohe



Kitchens

Italian



Photovoltaics

On the roof top



Sockets for Charging

Ideal for Electrical Cars



Delivery

2nd Quarter 2024

GROUND FLOOR

APT I.1 | APT I. 2



GROUND FLOOR

APT I.1



APARTMENT I.1

ITHOMIS and GRAMVOUSIS, GLYFADA



GRAMVOUSIS St.

GROUND FLOOR

ITHOMIS St.



S.M
47



S.M BALCONIES
73



LEVEL
0



PARKING
YES



STORAGE ROOM
NO



BEDROOMS
1







GROUND FLOOR

APT 1.2



APARTMENT I.2

ITHOMIS and GRAMVOUSIS, GLYFADA



GRAMVOUSIS St.

GROUND FLOOR

ITHOMIS St.



S.M
47



S.M BALCONIES
44



LEVEL
0



PARKING
YES



STORAGE ROOM
NO



BEDROOMS
1

FIRST & SECOND LEVEL

MAIS 1 | MAIS 2 | MAIS 3




FIRST & SECOND LEVEL


MAIS 1




MAIS 1

- 


S.M

44.8 + 30.95 = 75.75
- 


S.M BALCONIES

11.50
- 


LEVEL

1 & 2
- 

PARKING

YES
- 

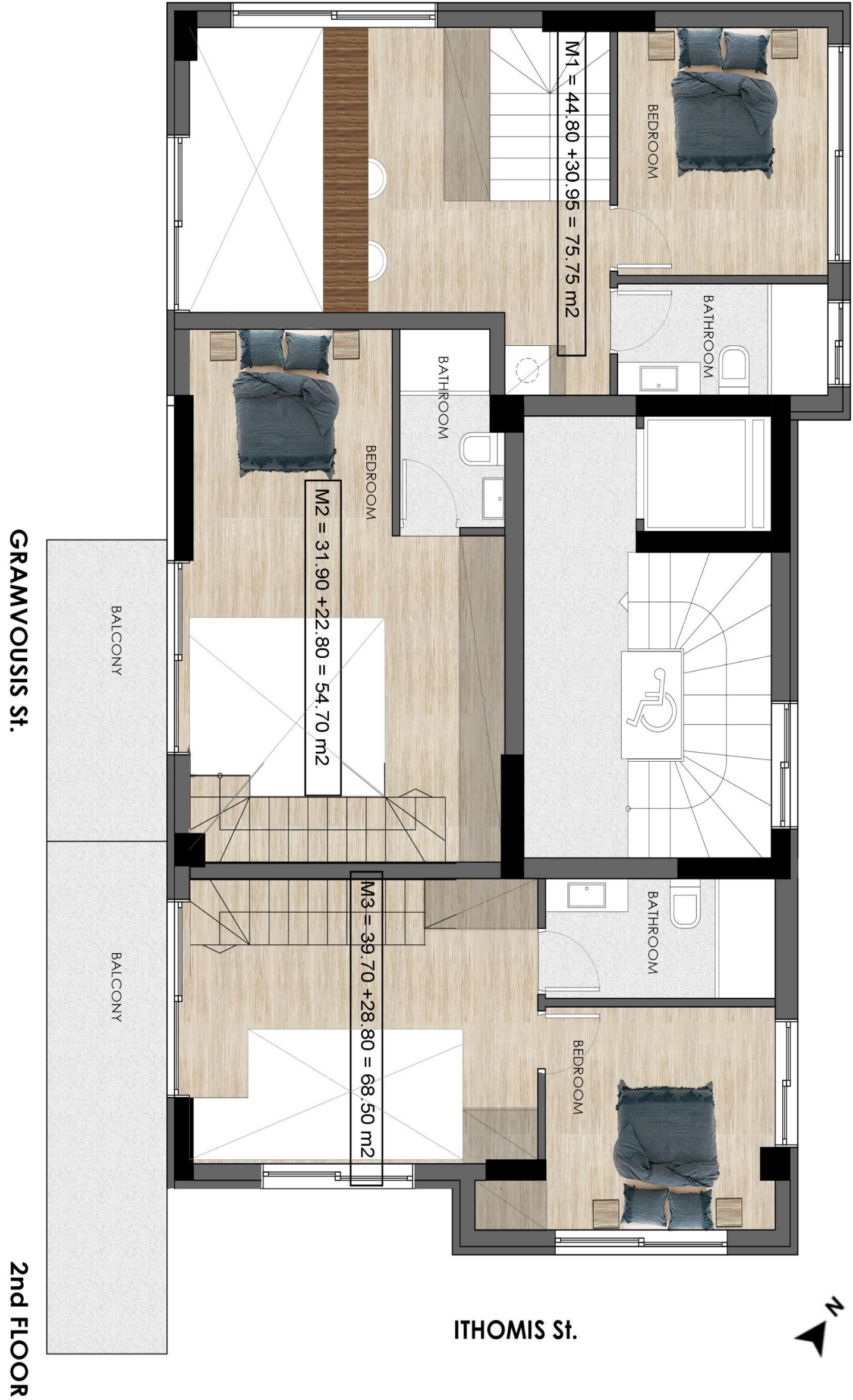
STORAGE ROOM

NO
- 

BEDROOMS

2

ITHOMIS and GRAMVOUSIS, GLYFADA



ITHOMIS and GRAMVOUSIS, GLYFADA








FIRST & SECOND LEVEL


MAIS 2




MAIS 2

- 


S.M

31.9 + 22.80 = 54.70
- 


S.M BALCONIES

11.60
- 


LEVEL

1 & 2
- 

PARKING

YES
- 

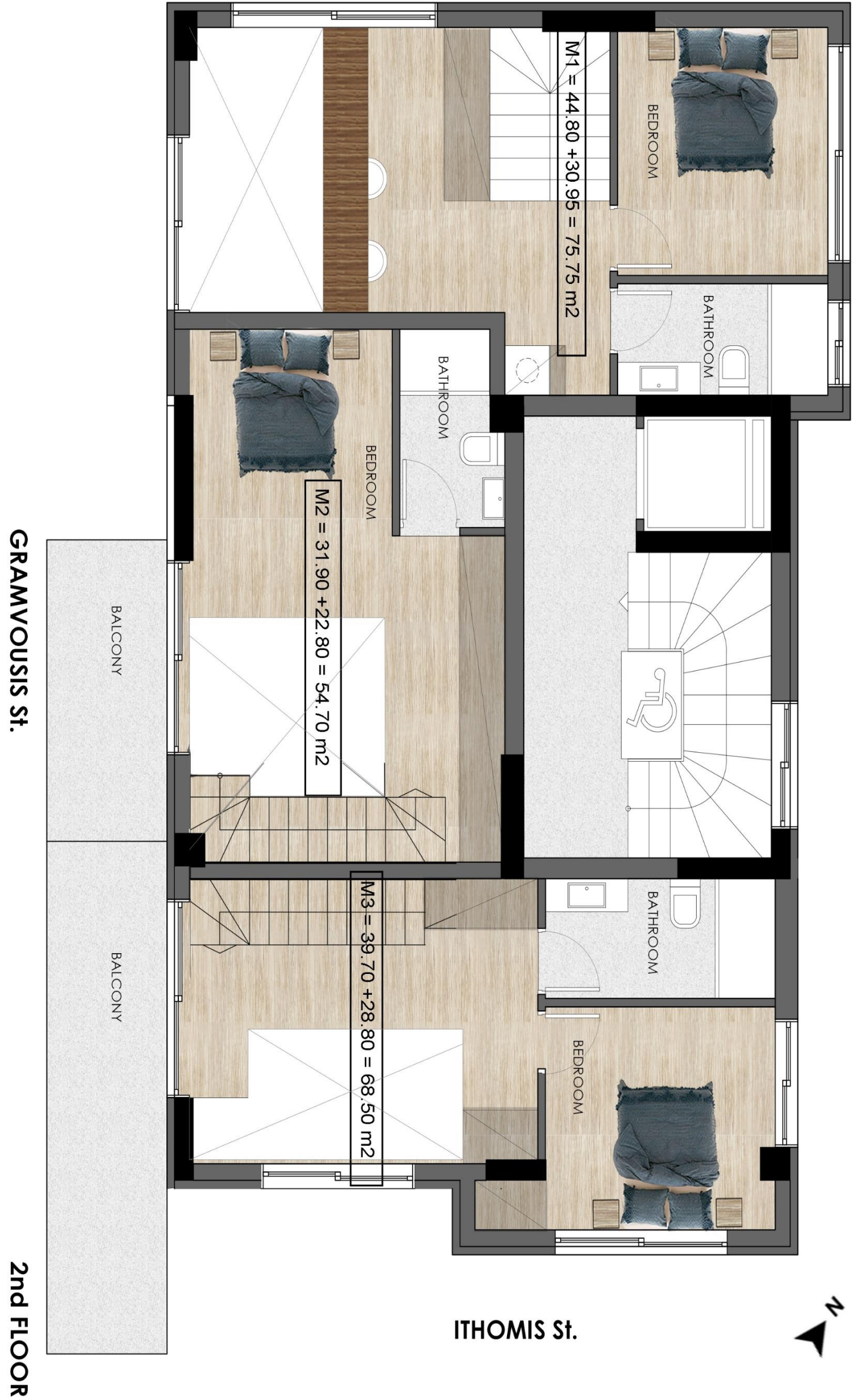
STORAGE ROOM

NO
- 

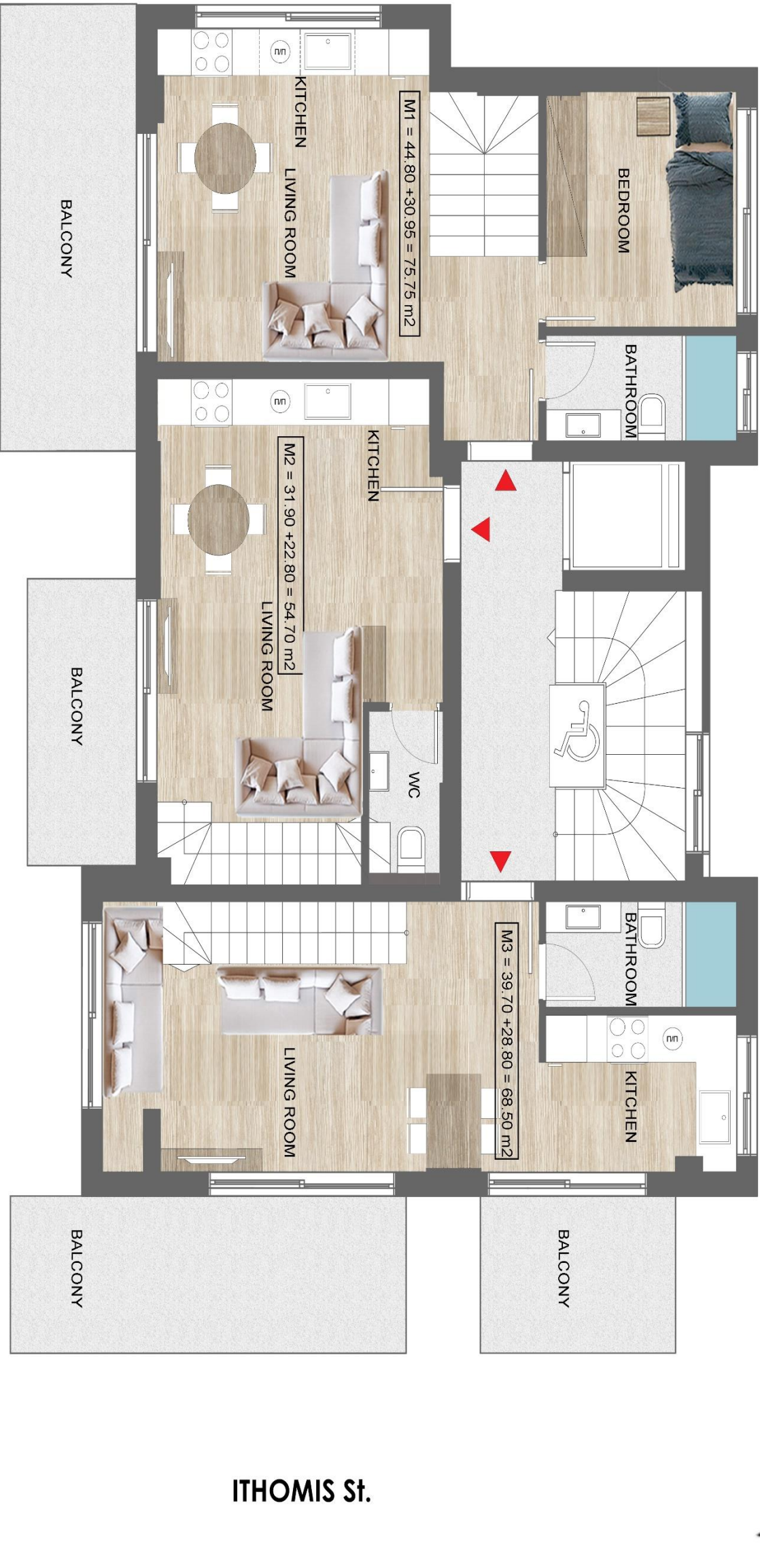
BEDROOMS

1

ITHOMIS and GRAMVOUSIS, GLYFADA



ITHOMIS and GRAMVOUSIS, GLYFADA








FIRST & SECOND LEVEL


MAIS 3 - PARTIAL SEA VIEW





MAIS 3


PARTIAL SEA VIEW


- 

S.M
39.70 + 28.80 = 68.50
- 

S.M BALCONIES
27.20
- 

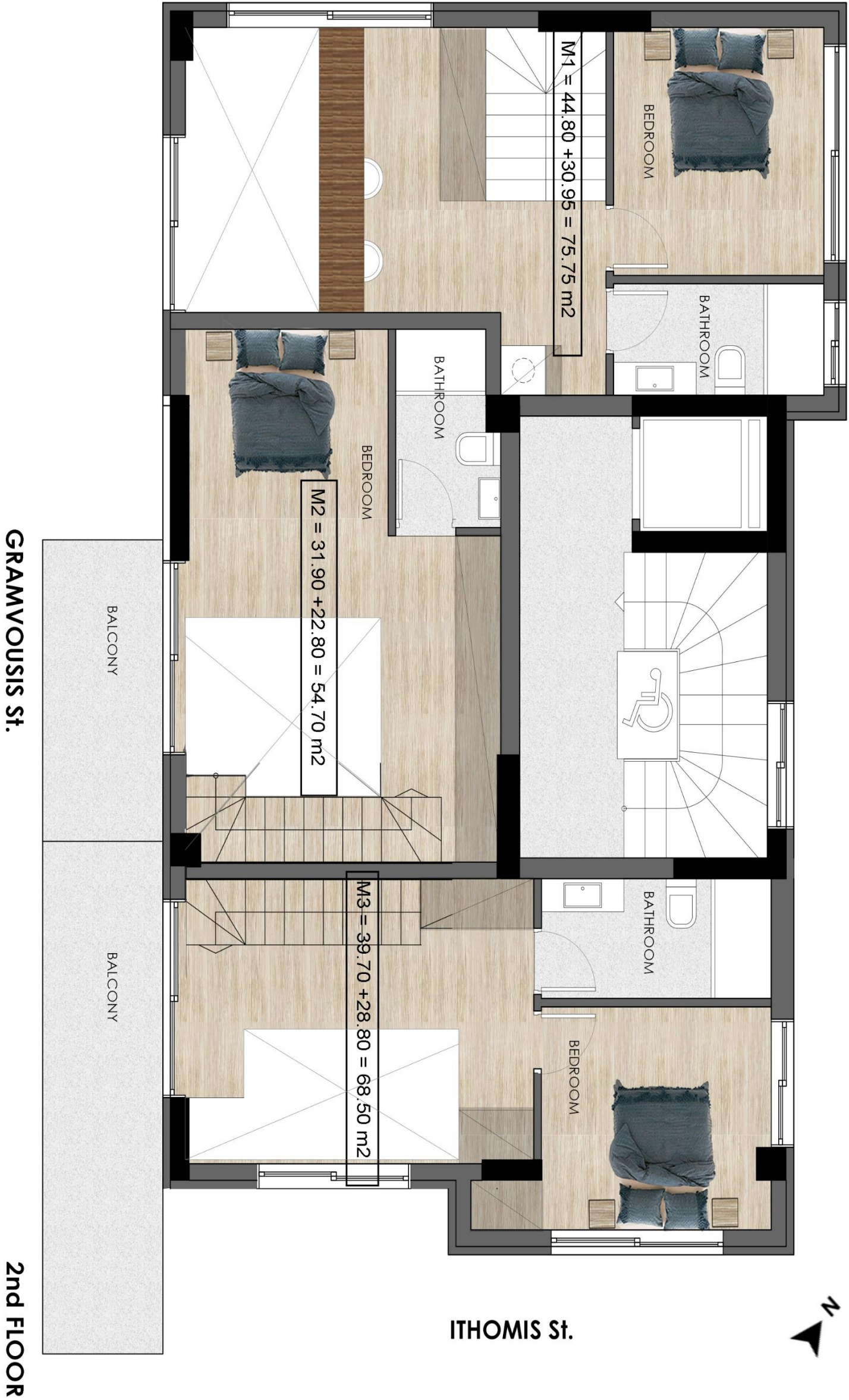
LEVEL
1 & 2
- 

PARKING
YES
- 

STORAGE ROOM
NO
- 

BEDROOMS
1

ITHOMIS and GRAMVOUSIS, GLYFADA



ITHOMIS and GRAMVOUSIS, GLYFADA







THIRD LEVEL

APT 3.1 | APT 3.2



THIRD LEVEL

APT 3.1



APT 3.1

ITHOMIS and GRAMVOUSIS, GLYFADA



ITHOMIS St.

GRAMVOUSIS St.

3srd/4th/5th FLOOR



S.M
49.70



S.M BALCONIES
19



LEVEL
3



PARKING
YES



STORAGE ROOM
NO



BEDROOMS
1





THIRD LEVEL

APT 3.2 - SEA VIEW



APT 3.2
SEA VIEW

ITHOMIS and GRAMVOUSIS, GLYFADA



GRAMVOUSIS St.

3srd/4th/5th FLOOR



S.M
49.70



S.M BALCONIES
24.50



LEVEL
3



PARKING
YES



STORAGE ROOM
NO



BEDROOMS
1

FOURTH LEVEL

APT 4.1 | APT 4.2



FOURTH LEVEL

APT 4.1 – PARTIAL SEA VIEW



APT 4.1

PARTIAL SEA VIEW

ITHOMIS and GRAMVOUSIS, GLYFADA



ITHOMIS St.

GRAMVOUSIS St. 3rd/4th/5th FLOOR



S.M
49.70



S.M BALCONIES
19



LEVEL
4



PARKING
YES



STORAGE ROOM
NO



BEDROOMS
1





FOURTH LEVEL

APT 4.2 – SEA VIEW



APT 4.2
SEA VIEW

ITHOMIS and GRAMVOUSIS, GLYFADA



GRAMVOUSIS St.

3srd/4th/5th FLOOR



S.M
49.70



S.M BALCONIES
24.50



LEVEL
4



PARKING
YES



STORAGE ROOM
NO



BEDROOMS
1

FIFTH LEVEL

APT 5.1 | APT 5.2



FIFTH LEVEL

APT 5.1 – SEA VIEW



APT 5.1

SEA VIEW

ITHOMIS and GRAMVOUSIS, GLYFADA



ITHOMIS St.

GRAMVOUSIS St.

3rd/4th/5th FLOOR

-  S.M
49.70
-  S.M BALCONIES
19
-  LEVEL
5
-  PARKING
YES
-  STORAGE ROOM
NO
-  BEDROOMS
1





FIFTH LEVEL

APT 5.2 – SEA VIEW



APT 5.2
SEA VIEW

ITHOMIS and GRAMVOUSIS, GLYFADA



GRAMVOUSIS St.

3rd/4th/5th FLOOR



S.M
49.70



S.M BALCONIES
24.50



LEVEL
4



PARKING
YES



STORAGE ROOM
NO



BEDROOMS
1



DISTANCES

1. Center of Glyfada| 3.5km
2. Sea Side | 4 Km
3. Shops| 500m
4. Public Transport| 370m
5. School | 450m
6. Airport | 27 km
7. Hospital| 1.7 km



THANK YOU