

SOUTH

Aigyptou 118 - Glyfada





Project Description

The project is located in the southern part of Athens close to the centre of Glyfada in a quiet and sparsely populated area. The building extends into five levels offering two (double) bedroom maisonettes and six (single) bedroom apartments.



Energy Efficiency

A+



Heating

Individual – Heat/Cooling Pumps



Sanitary Ware

Grohe



Kitchens

Italian



Photovoltaics

On the roof top



Sockets for Charging

Ideal for Electrical Cars



Delivery

3rd Quarter 2024



Unit Number

Level

Internal Area

Balconies

Bedrooms

Bathrooms

Parking

Storage

1.1

1

47.7m2

8.5m2

1

1



N/A

1.2

1

48.2m2

14.5m2

1

1



N/A

2.1

2

47.7m2

8.5m2

1

1



N/A

2.2

2

48.2m2

14.5m2

1

1



N/A

3.1

SEA VIEW

3

47.7m2

8.5m2

1

1



N/A

3.2

3

48.2m2

14.5m2

1

1



N/A

M.1

SEA VIEW

4&5

40+30=70m2

32m2

2

2



N/A

M.2

SEA VIEW

4&5

39.5+29.5=69m2

33m2

2

2



N/A

FIRST LEVEL

APT 1.1 | APT 1.2



APT 1.1

FIRST LEVEL



APARTMENT 1.1



AI GYPTOU Str
FIRST-SECOND-THIRD FLOOR

AI GYPTOU 118, GLYFADA



S.M
47.7



S.M BALCONIES
8.5



LEVEL
1



PARKING
YES



STORAGE ROOM
N/A



BEDROOMS
1







APT 1.2

FIRST LEVEL



APARTMENT 1.2



AI GYPTOU Str
FIRST-SECOND-THIRD FLOOR



S.M
48.2



S.M BALCONIES
14.5



LEVEL
1



PARKING
YES



STORAGE ROOM
N/A



BEDROOMS
1

AI GYPTOU 118, GLYFADA









SECOND LEVEL

APT 2.1 | APT 2.2



APT 2.1

SECOND LEVEL



APARTMENT 2.1



AI GYPTOU Str
FIRST-SECOND-THIRD FLOOR



S.M
47.7



S.M BALCONIES
8.5



LEVEL
2



PARKING
YES



STORAGE ROOM
N/A



BEDROOMS
1

AI GYPTOU 118, GLYFADA









APT 2.2

SECOND LEVEL



APARTMENT 2.2



AI GYPTOU Str
FIRST-SECOND-THIRD FLOOR



S.M
48.2



S.M BALCONIES
14.5



LEVEL
2



PARKING
YES



STORAGE ROOM
N/A



BEDROOMS
1

AI GYPTOU 118, GLYFADA









THIRD LEVEL

APT 3.1 | APT 3.2



APT 3.1

THIRD LEVEL – SEA VIEW



APARTMENT 3.1

SEA VIEW



AI GYPTOU Str
FIRST-SECOND-THIRD FLOOR



S.M
47.7



S.M BALCONIES
8.5



LEVEL
3



PARKING
YES



STORAGE ROOM
N/A



BEDROOMS
1

AI GYPTOU 118, GLYFADA









APT 3.2

THIRD LEVEL



APARTMENT 3.2



AI GYPTOU Str
FIRST-SECOND-THIRD FLOOR

AI GYPTOU 118, GLYFADA



S.M
48.2



S.M BALCONIES
14.5



LEVEL
3



PARKING
YES



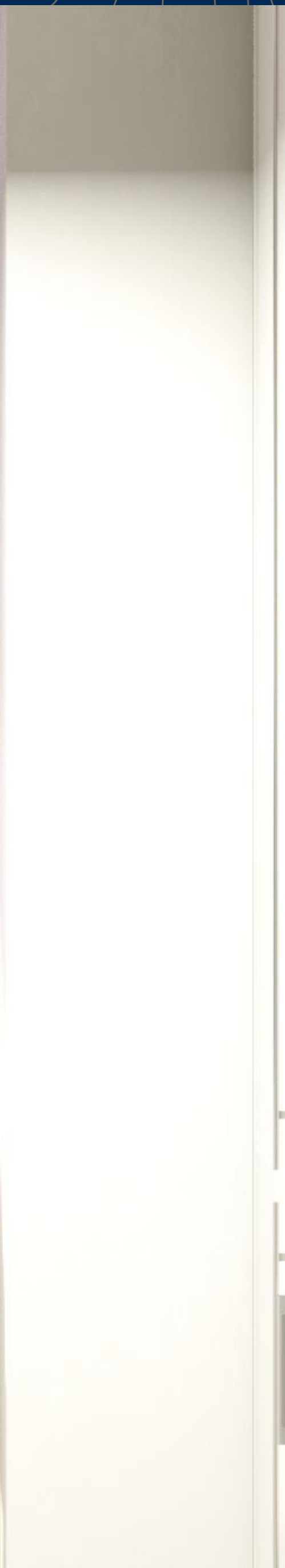
STORAGE ROOM
N/A



BEDROOMS
1







FOURTH & FIFTH LEVEL

MAIS M.1 | MAIS M.2



MAIS M.1

FOURTH & FIFTH LEVEL – SEA VIEW



MAISONETTE M.1

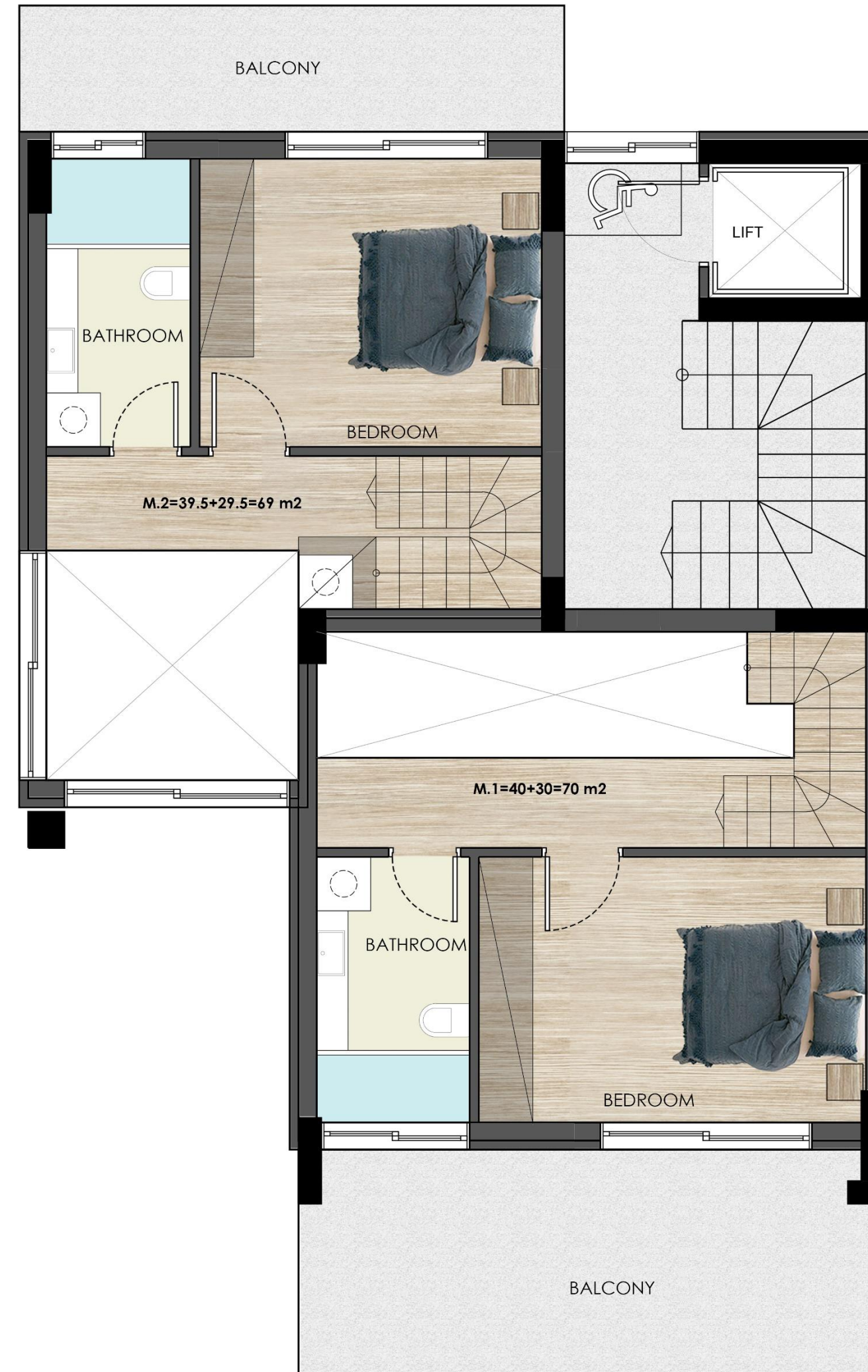
SEA VIEW

AIGYPTOU 118, GLYFADA



AIGYPTOU Str
FORTH FLOOR

AIGYPTOU 118, GLYFADA



AIGYPTOU Str
FIFTH FLOOR



S.M
40+30=70



S.M BALCONIES
32



LEVEL
4&5



PARKING
YES



STORAGE ROOM
N/A



BEDROOMS
2







MAIS M.2

FOURTH & FIFTH LEVEL – SEA VIEW



MAISONETTE M.2

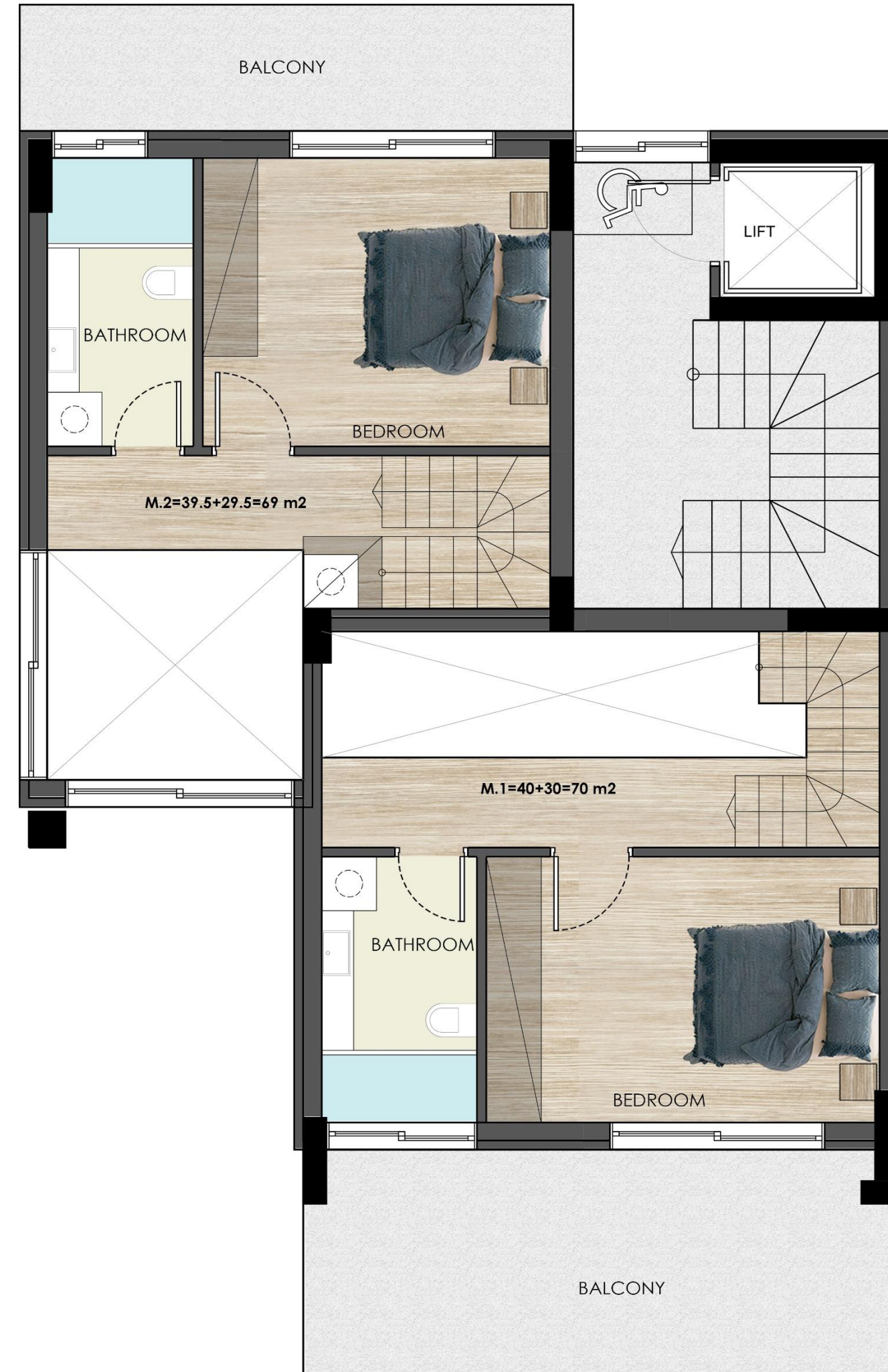
SEA VIEW

AIGYPTOU 118, GLYFADA

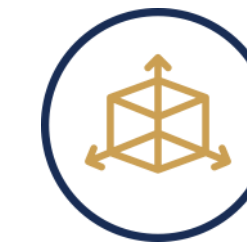


AIGYPTOU Str
FORTH FLOOR

AIGYPTOU 118, GLYFADA



AIGYPTOU Str
FIFTH FLOOR



S.M
39.50+29.50=69



S.M BALCONIES
33



LEVEL
4&5



PARKING
YES

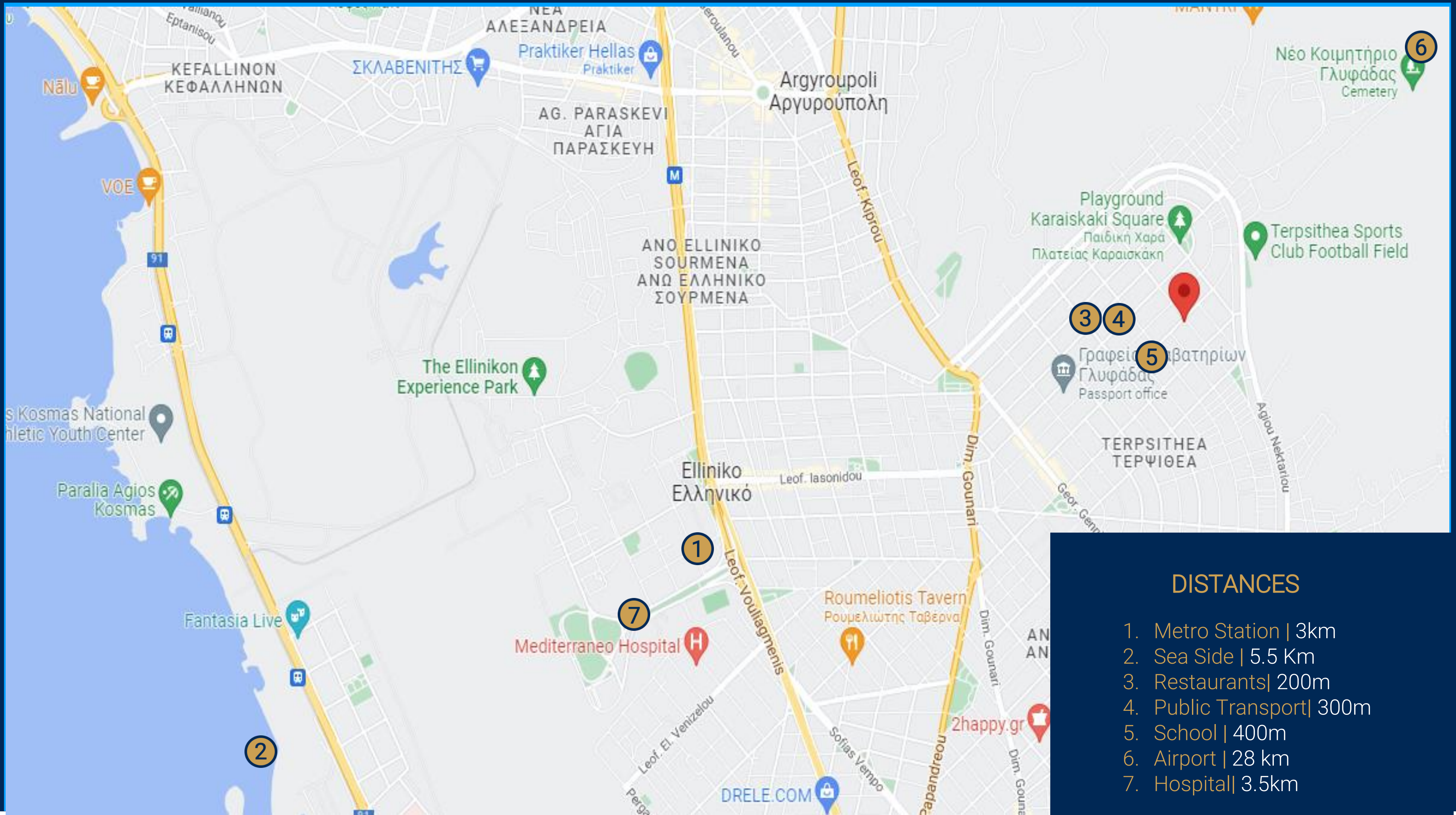


STORAGE ROOM
N/A



BEDROOMS
2





DISTANCES

1. Metro Station | 3km
2. Sea Side | 5.5 Km
3. Restaurants| 200m
4. Public Transport| 300m
5. School | 400m
6. Airport | 28 km
7. Hospital| 3.5km

THANK YOU

