

# SOUTH

Spetson 120 - Voula





## Project Description

The project is located in the southern part of Athens close to the centre of Voula in a quiet residential area. The building extend into four floors offering (three) double – bedroom apartments and (two) three-bedroom apartments with a communal swimming pool based on the ground floor. It's distinct and unique architectural design promotes the impression of harmony and balance due to its characteristic composition of cleverly positioned horizontal and vertical structural overlays creating a sense of serenity and calmness.



Energy Efficiency

**A+**



Heating

**Heat Pump**



Sanitary Ware

**Grohe**



Kitchens

**Italian**



Photovoltaics

**On the roof top**



Sockets for Charging

**Ideal for Electrical Cars**



Delivery

**3<sup>rd</sup> Quarter 2023**



**Unit Number**

**Level**

**Internal Area**

**Balconies**

**Bedrooms**

**Bathrooms**

**Parking**

**Storage**

MAIS 1

0 & 1

78m<sup>2</sup>

26,5m<sup>2</sup>

2

2

✓

✓

I1

0

76m<sup>2</sup>

28,5m<sup>2</sup>

2

1

✓

✓

MAIS 2

1 & 2

106m<sup>2</sup>

53,5m<sup>2</sup>

3

2

✓

✓

MAIS 3

2 & 3

78m<sup>2</sup>

21m<sup>2</sup>

1

2

✓

✓

MAIS 4

3 & 4

117m<sup>2</sup>

46m<sup>2</sup>

3

3

✓

✓

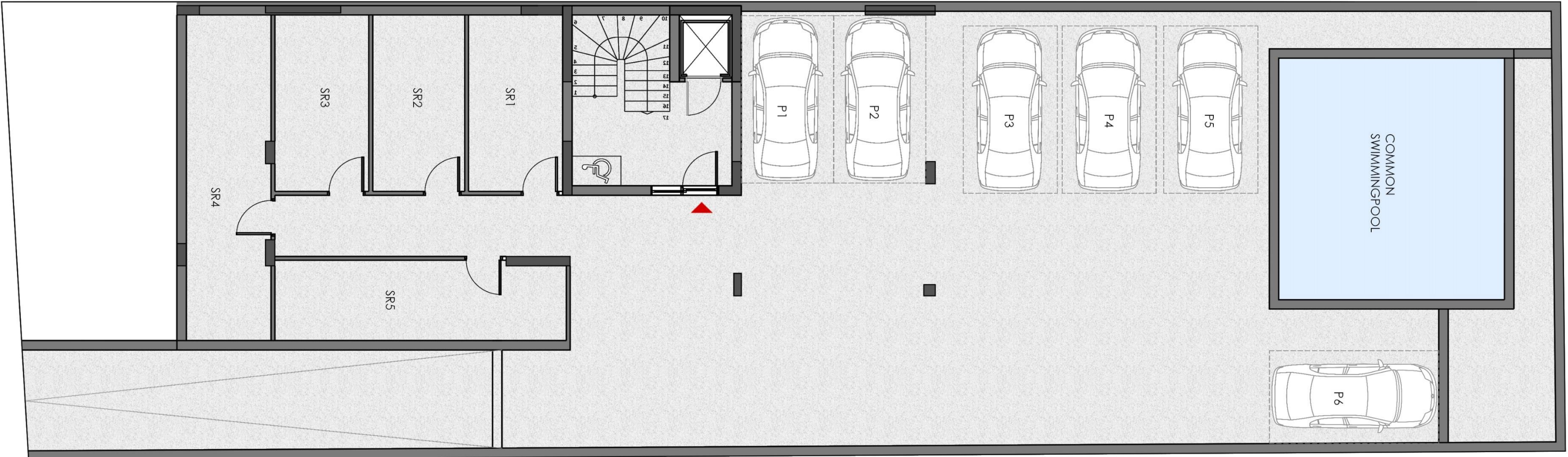
Sqm measurements may vary up to ± 3%



# BASEMENT

PARKING SPACE & STORAGES





SPEISON Stf  
BASEMENT LEVEL

# BASEMENT

# ZERO LEVEL

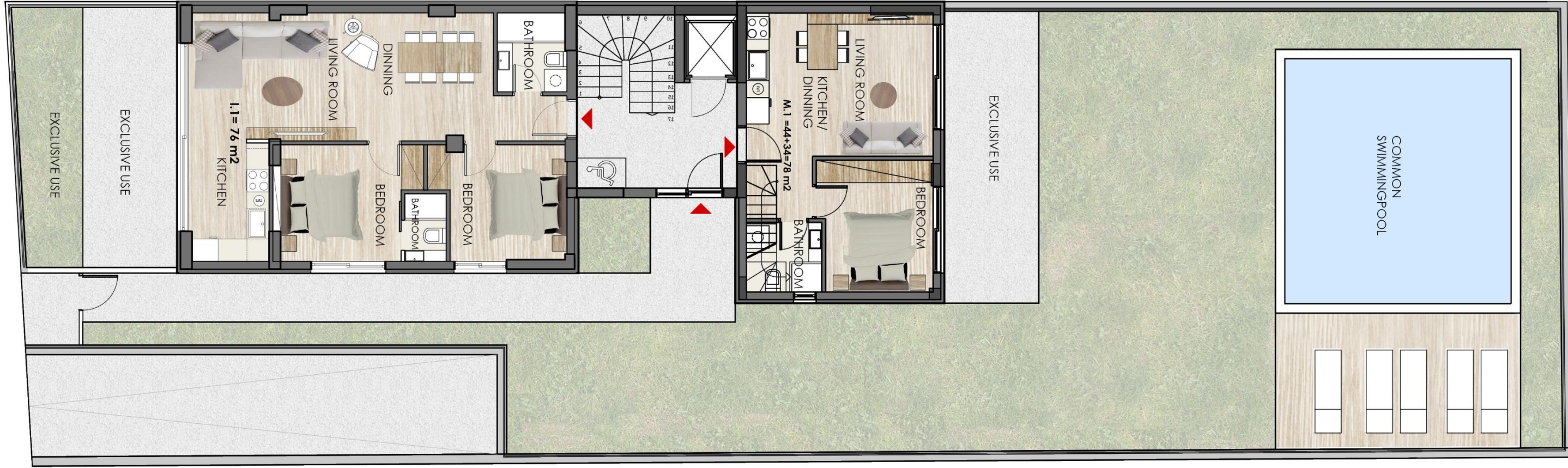
OPTION 11





# APARTMENT I.1

SPETSON 120, VOULA



SPETSON Str  
ZERO LEVEL



S.M  
76



S.M BALCONIES  
28.5



LEVEL  
ZERO LEVEL



PARKING  
YES



STORAGE ROOM  
YES



BEDROOMS  
2







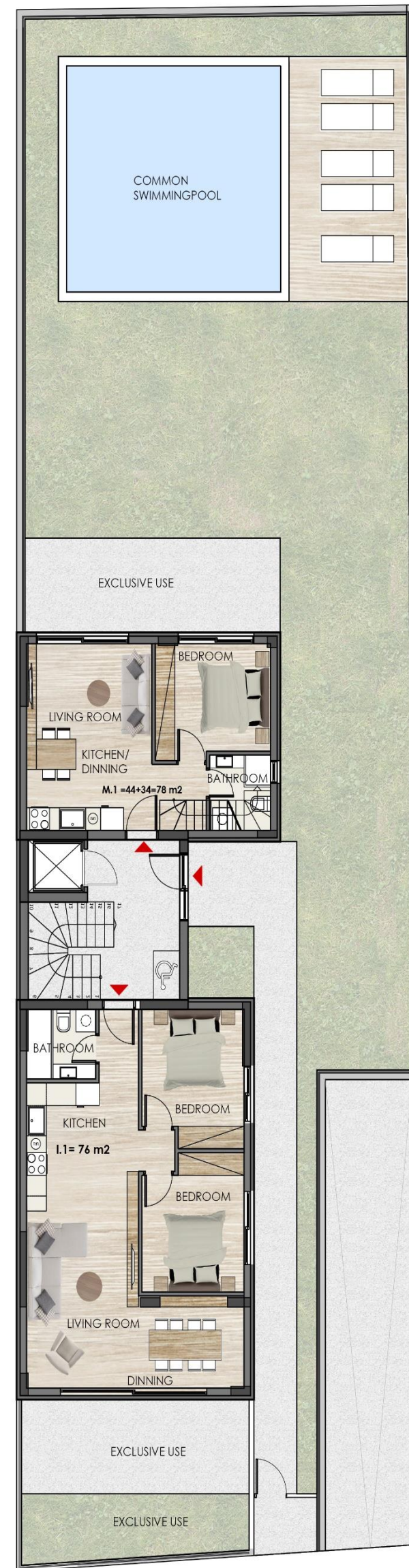
# MAIS 1 | LOFT

ZERO & FIRST LEVEL



# MAIS 1

SPETSON 120, VOULA

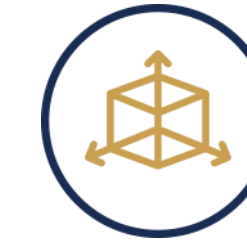


SPETSON Str  
ZERO LEVEL

SPETSON 120, VOULA



SPETSON Str  
FIRST LEVEL



**S.M**  
44 + 34 = 78



**S.M BALCONIES**  
26.5



**LEVEL**  
ZERO & FIRST



**PARKING**  
YES



**STORAGE ROOM**  
YES



**BEDROOMS**  
2







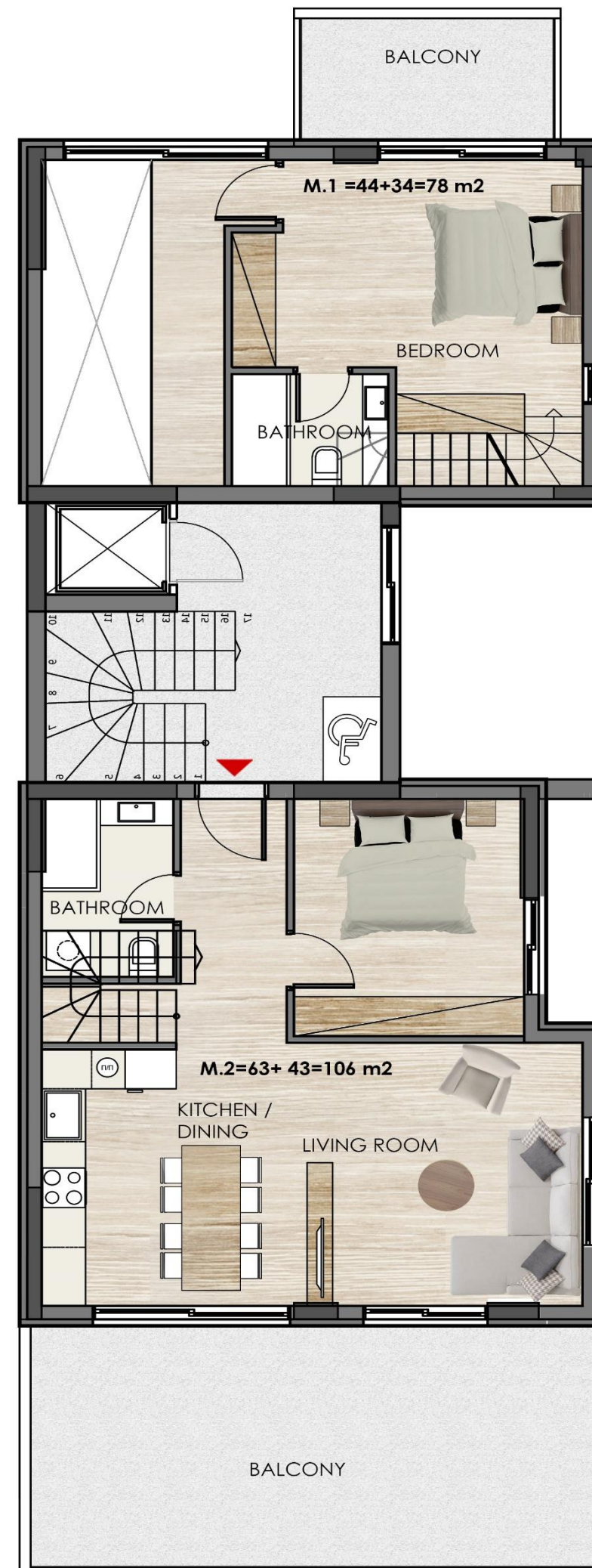
# MAIS 2 | LOFT

FIRST & SECOND LEVEL



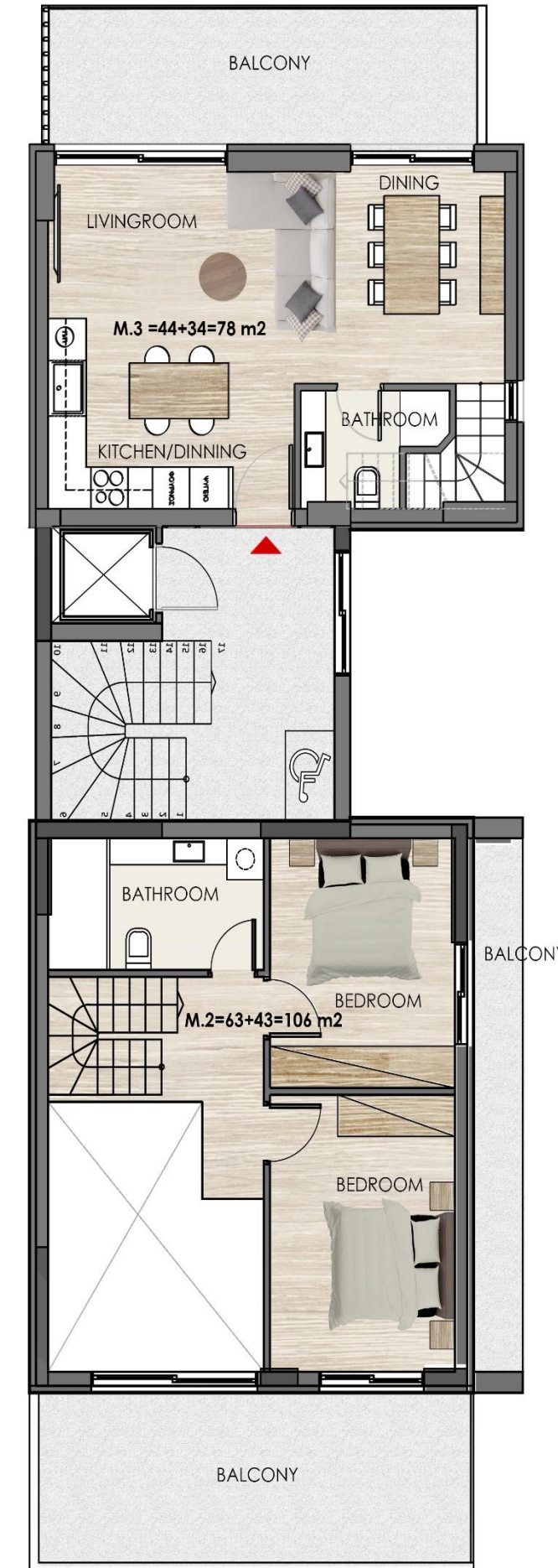
# MAIS 2

SPETSON 120, VOULA



SPETSON Str  
FIRST LEVEL

SPETSON 120, VOULA



SPETSON Str  
SECOND LEVEL



S.M  
63+ 43 = 106



S.M BALCONIES  
53,5



LEVEL  
1&2



PARKING  
YES



STORAGE ROOM  
YES



BEDROOMS  
3





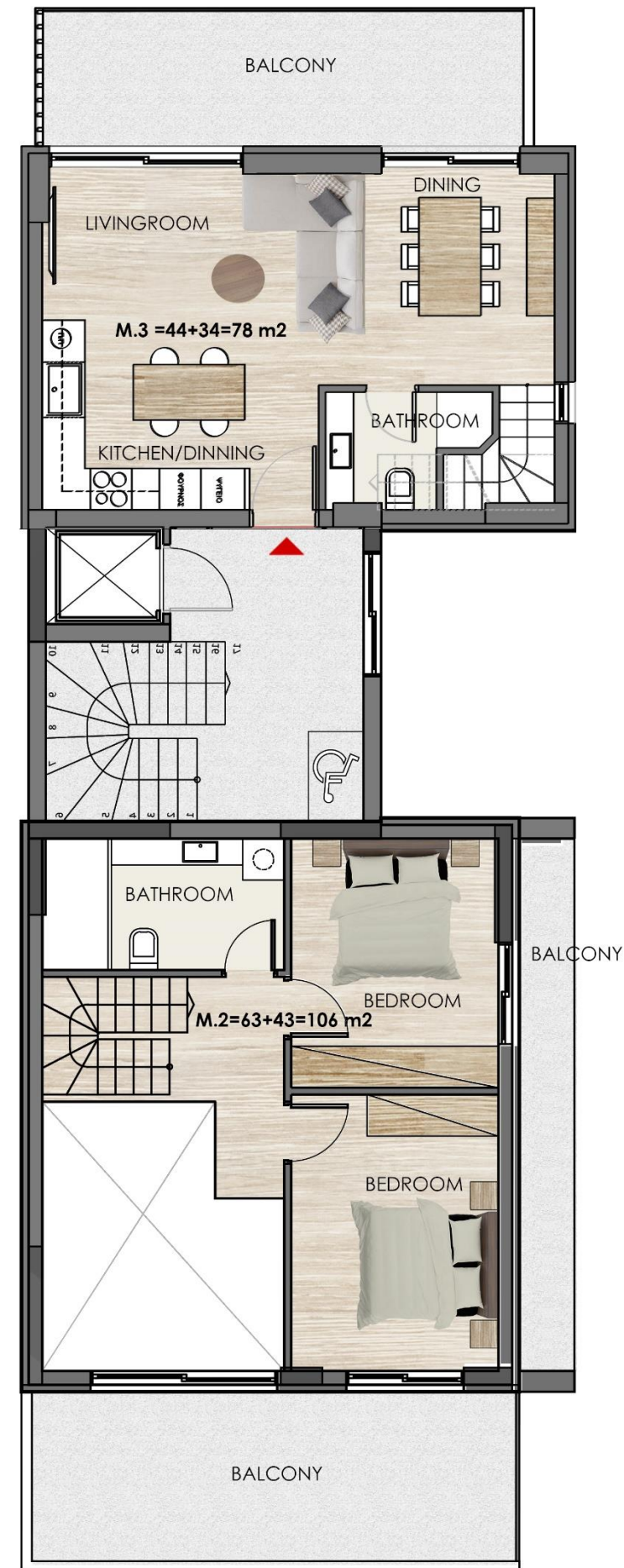
# MAIS 3 | LOFT

SECOND & THIRD FLOOR



# MAIS 3

SPETSON 120, VOULA



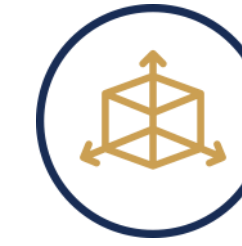
SPETSON Str  
SECOND LEVEL



SPETSON 120, VOULA



SPETSON Str  
THIRD LEVEL



S.M  
44 + 34 = 78



S.M BALCONIES  
21



LEVEL  
2 & 3



PARKING  
YES



STORAGE ROOM  
YES



BEDROOMS  
1



# MAIS 4 | LOFT

THIRD & FOURTH FLOOR





# MAIS 4

SPETSON 120, VOULA



SPETSON Str  
THIRD LEVEL



SPETSON Str  
FORTH LEVEL



**S.M**  
63 + 54 = 117



**S.M BALCONIES**  
46



**LEVEL**  
3 & 4



**PARKING**  
YES



**STORAGE ROOM**  
YES



**BEDROOMS**  
3





Σπετσών 120, Βάρη-Βούλα-Βουλιαγμένη,  
Αττική 16673, Ελλάδα

## DISTANCES

1. Metro Station | 10km
2. Sea Side | 1,6 Km
3. Restaurants| 1,5km
4. Public Transport| 500m
5. School | 2.3km
6. Airport | 20 km
7. Hospital| 4 km



**THANK YOU**