



# GLYFADA - ASKLIPIOU 4

South, Glyfada



## Project Description

South, Glyfada



### Property Features

- Elevator
- Storage Space
- Sea View
- Floors Building

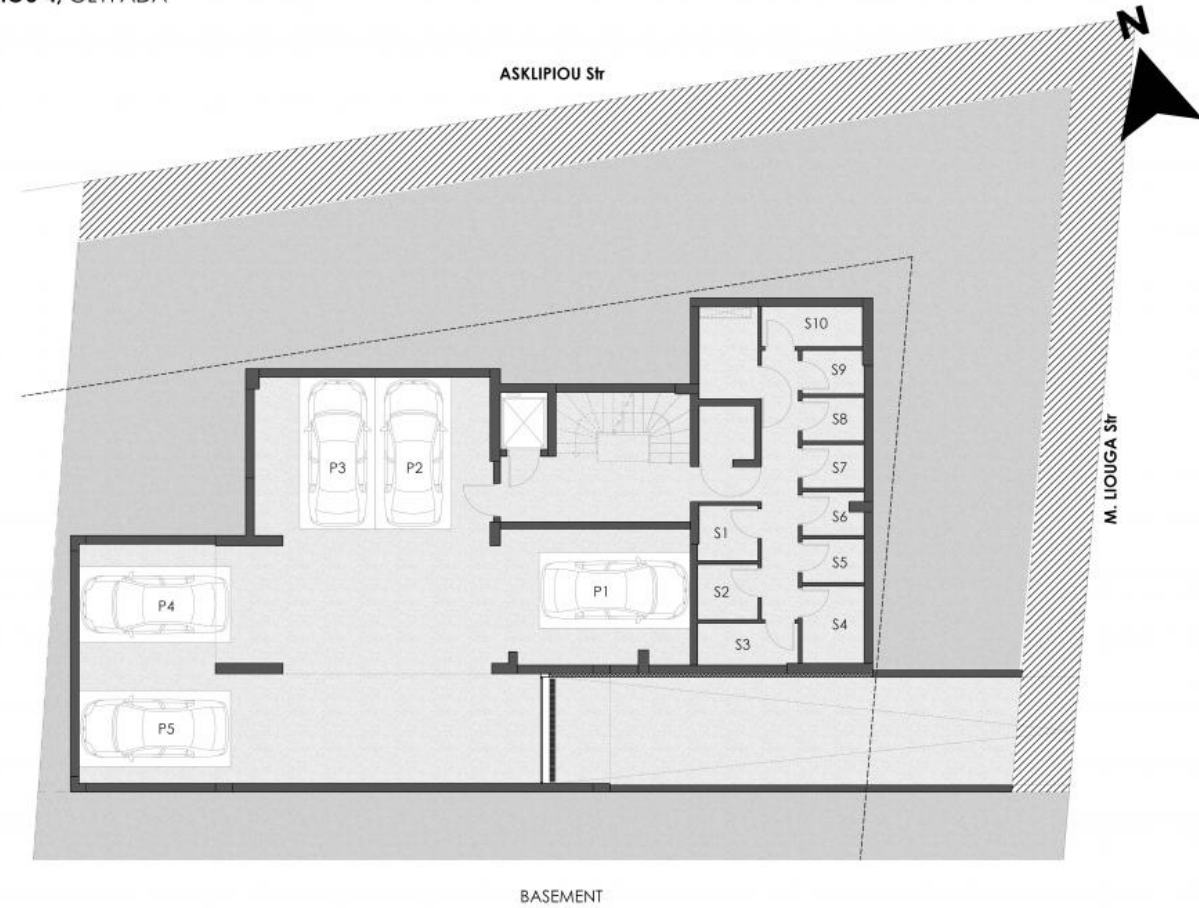
### Amenities

- Airport 24.9 km
- School 0.6 km
- Beach 1.7 km
- Hospital 1.4 km
- Shops 0.6 km
- Tram 2 km

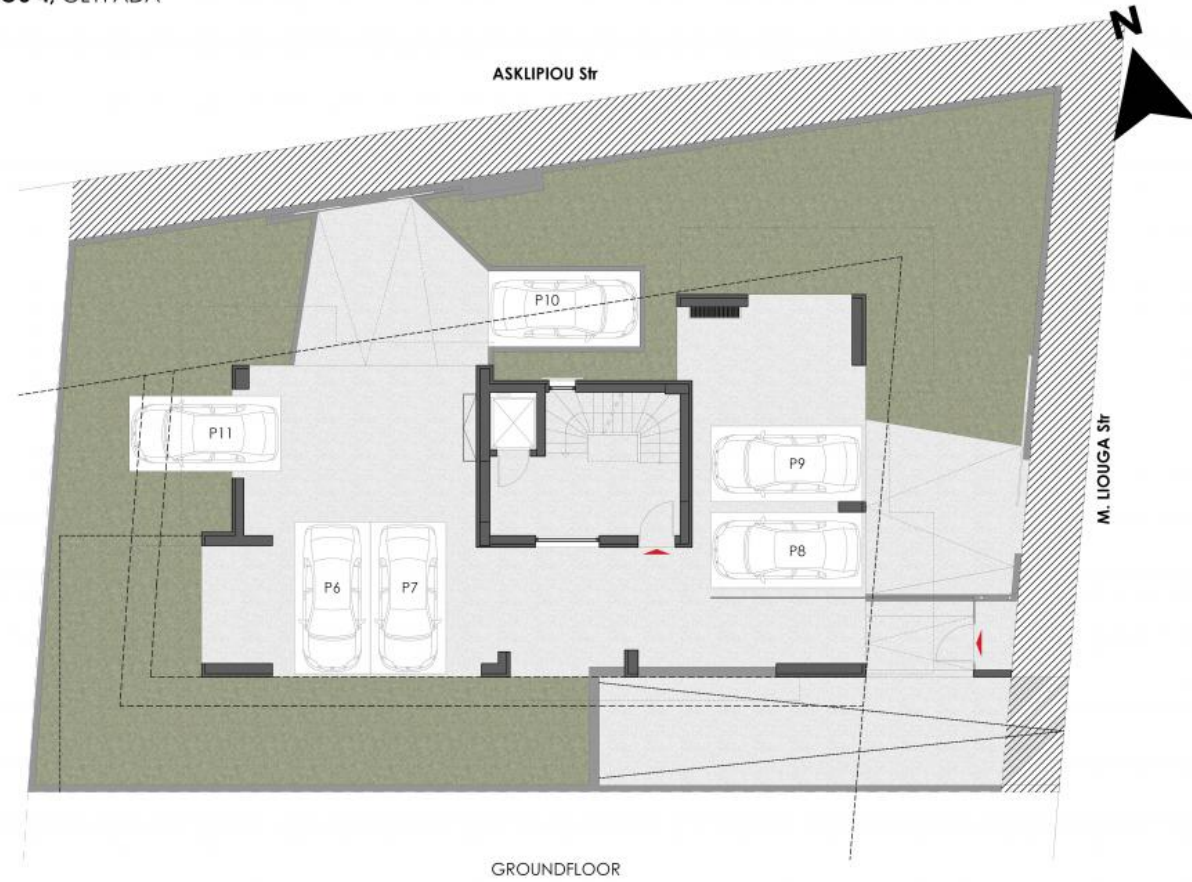


**Location**  
South, Glyfada

ASKLIPIOU 4, GLYFADA



ASKLIPIOU 4, GLYFADA



**ASKLIPIOU 4, GLYFADA**

ASKLIPIOU Str



FIRST FLOOR

ASKLIPIOU 4, GLYFADA

ASKLIPIOU Str



M. LIUGA Str

SECOND FLOOR



ASKLIPIOU 4, GLYFADA

ASKLIPIOU Str



M. LIUGA Str

THIRD / FOURTH FLOOR

ASKLIPIOU 4, GLYFADA

ASKLIPIOU Str



M. LIUGA Str

FIFTH FLOOR



Unit Number	Level	Internal Area	Balconies	Bedrooms	Bathrooms	Parking	Storage	Status
Mais 3	1	71.75m <sup>2</sup>	15.47m <sup>2</sup>	1	2	Yes	Yes	Available
Mais 1	1	64.77m <sup>2</sup>	20.73m <sup>2</sup>	1	2	Yes	Yes	Available
Mais 2	1	62.58m <sup>2</sup>	9.53m <sup>2</sup>	1	2	Yes	Yes	Available
A1	1	47.57m <sup>2</sup>	15.47m <sup>2</sup>	1	1	Yes	No	Available
B1	2	47.57m <sup>2</sup>	15.51m <sup>2</sup>	1	1	Yes	Yes	Sold
C1	3	76.99m <sup>2</sup>	33.73m <sup>2</sup>	2	1	Yes	Yes	Available
C2	3	75.53m <sup>2</sup>	28.88m <sup>2</sup>	2	1	Yes	Yes	Sold
D2	4	75.53m <sup>2</sup>	28.88m <sup>2</sup>	2	1	Yes	Yes	Sold
D1	4	76.99m <sup>2</sup>	33.73m <sup>2</sup>	2	1	Yes	Yes	Sold
E2	5	56.44m <sup>2</sup>	31.45m <sup>2</sup>	1	1	Yes	Yes	Available
E1	5	60.45m <sup>2</sup>	33.62m <sup>2</sup>	1	1	Yes	Yes	Available



## From A to Zafido

### Quality Dertemines Everything !

For clients investing in Zafido, what matters is the quality of the property as well as its location and design. Our projects are done by experienced and well recognized architects and engineers.

**30+**

EXPERIENCE

**250+**

EMPLOYEES

**500M+**

PROPERTY PORTIFOLIO

### Who we are

Located in the heart of the southern suburbs of Athens, we service the surrounding areas of Athens as well as regions outside of Attica. Integrity, trust and consistency are the foundation of our core values.

