



ILIOUPOLI - VITSI 30

South, Ilioupoli



Project Description

South, Ilioupoli

The building is located in the southern part of Athens close to the city center in the area of Ilioupoli which is considered the most refined region due to its immaculate layout. An incredibly outstanding design from every optical angle that ascends into five floors with balconies bordered with generous glass surrounds positioned in the south and east accentuating its uniqueness. Distinctive vertical fissures of varying dimensions are cleverly incorporated on the face of the building giving the visual appearance of an architectural masterpiece. Adding to its meticulous design further attention to detail has been employed in its structure to amplify natural lighting by implementing a vertical wing.



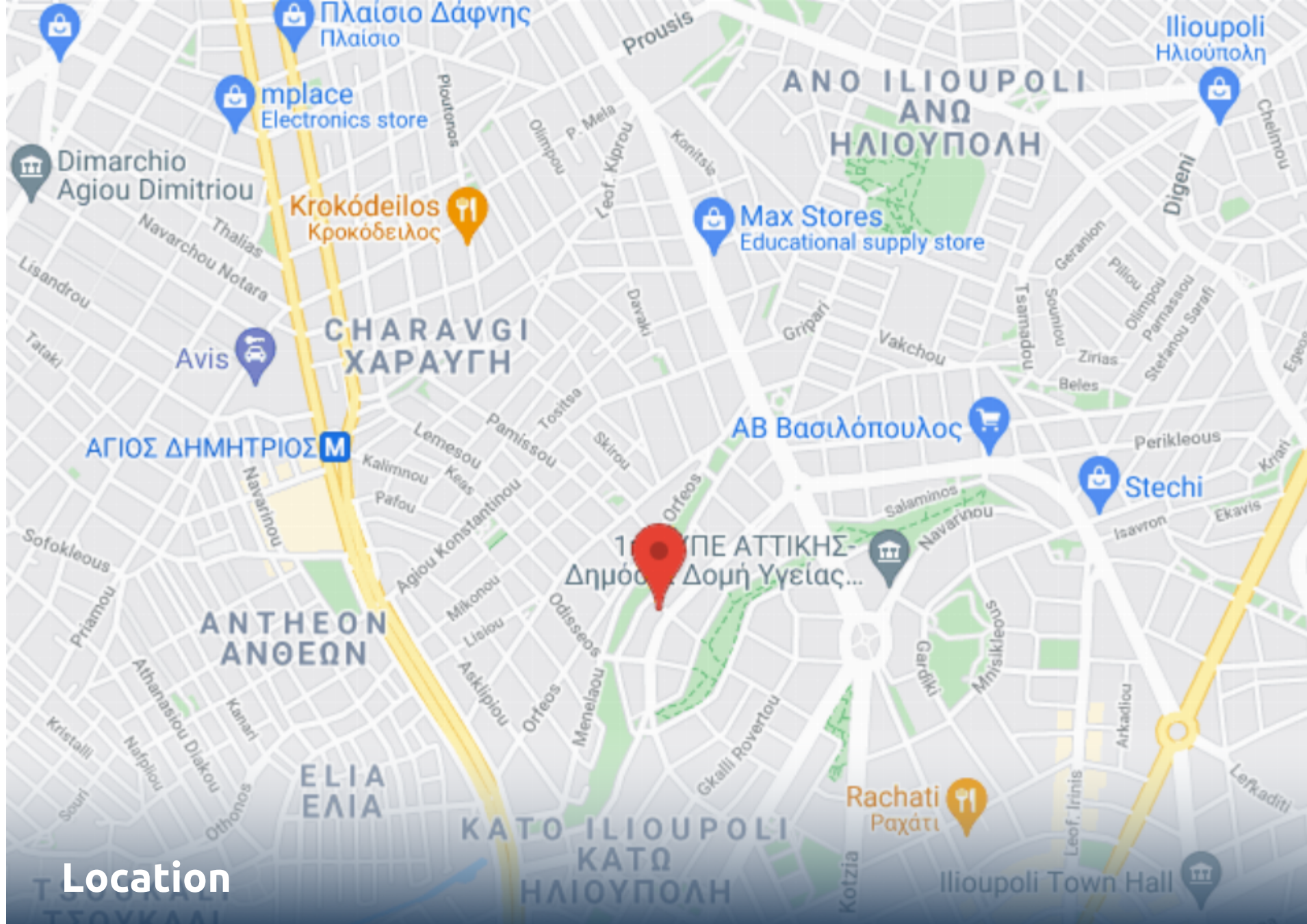
**Metro Mall: 7 minutes' walk /
Picturesque Park: 5 minutes' walk.**

Property Features

- Elevator
- Storage Space
- Floors Building
- Energy Grade: B+


Amenities

- Airport 32 km
- School 0.5 km
- University 5.5 km
- Beach 4.47 km
- Hospital 6 km
- Shops 0.2 km
- Tram 0.2 km
- Metro 1.7 km



Location
South, Ilioupoli



 Alex. Panagouli 17 16675 Glyfada Greece

 +30 210 89 43 809

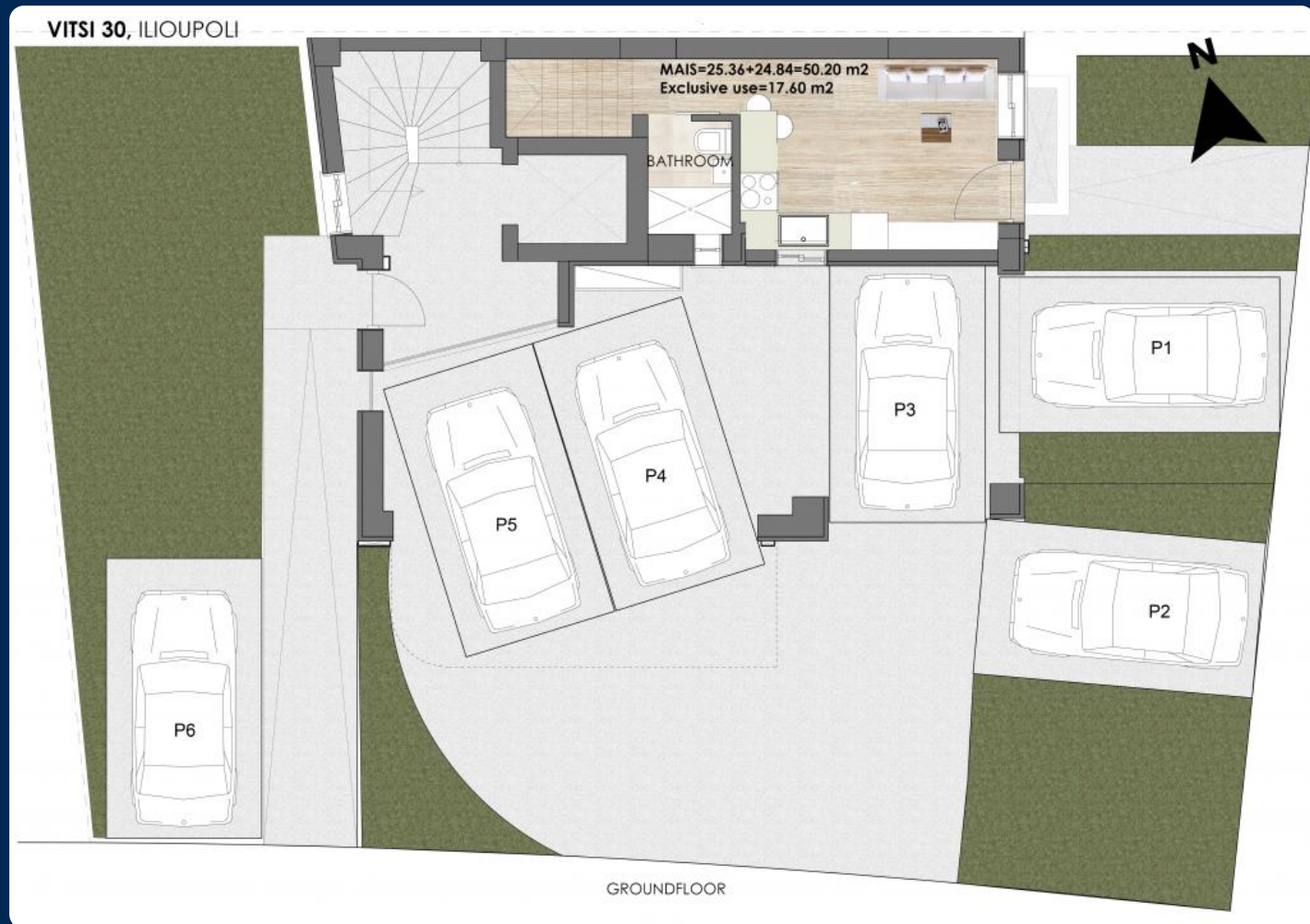
 www.zafido.gr

 athens@zafido.gr

VITSI 30, ILIOUPOLI



BASEMENT



VITSI 30, ILIOUPOLI



FIRST / SECOND / THIRD FLOOR

VITSI 30, ILIOUPOLI



FOURTH / FIFTH FLOOR





Unit Number	Level	Internal Area	Balconies	Bedrooms	Bathrooms	Parking	Storage	Status
Mais	0	50.2m ²	17.6m ²	1	1	Yes	Yes	Available
A1	1	72.95m ²	20.7m ²	2	1	Yes	Yes	Sold
B1	2	72.95m ²	20.7m ²	2	1	Yes	Yes	Sold
C1	3	72.95m ²	20.7m ²	2	1	Yes	Yes	Sold
D1	4	72.95m ²	20.5m ²	2	1	Yes	Yes	Sold
E1	5	72.95m ²	52.7m ²	2	1	Yes	Yes	Sold





From A to Zafido

Quality Dertemines Everything !

For clients investing in Zafido, what matters is the quality of the property as well as its location and design. Our projects are done by experienced and well recognized architects and engineers.

30+

EXPERIENCE

250+

EMPLOYEES

500M+

PROPERTY PORTIFOLIO

Who we are

Located in the heart of the southern suburbs of Athens, we service the surrounding areas of Athens as well as regions outside of Attica. Integrity, trust and consistency are the foundation of our core values.

