



GLYFADA - TAINAROU 43

South, Glyfada



Project Description

South, Glyfada

In the most picturesque landscape at the foot of the mountain facing the deep blue Mediterranean Sea we have designed our five storey building. Elegant and compact in appearance, the architecture was designed in a specific manner ensuring that every apartment enjoys the scenic views of sea as well as guaranteeing the appropriate privacy required. Balconies are located on the eastern side faced by the majestic sight of the mountain range of Hymettus. Its design distinct in its simplicity is characterised by its repetitive features whilst large glass surfaces positioned in specific places delivers added resources of optimum lighting and ventilation within.



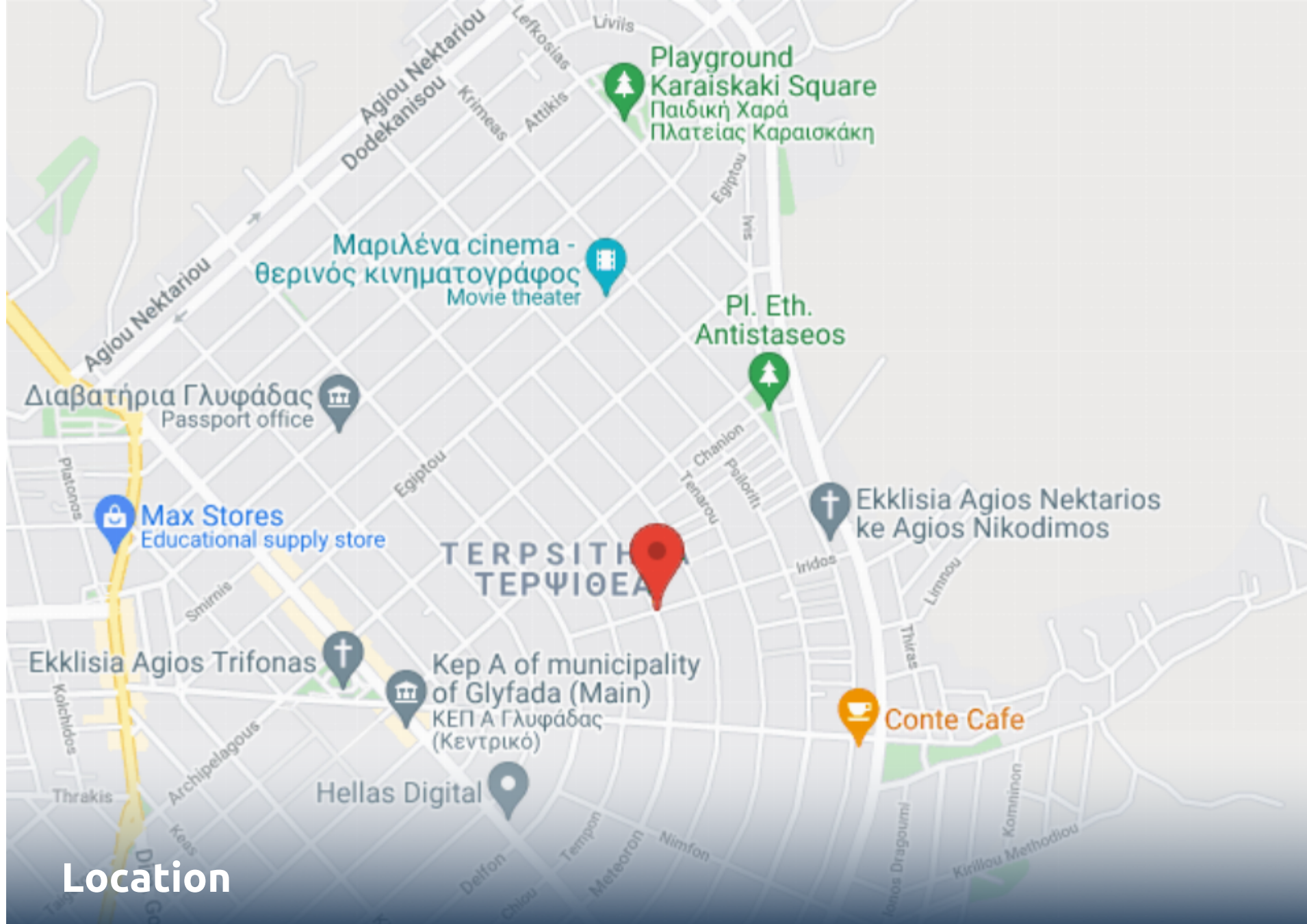
**Entrance Gate /Double Glazed
Windows /Parking Area /Roof Garden**

Property Features

- Elevator
- Storage Space
- Sea View
- Floors Building

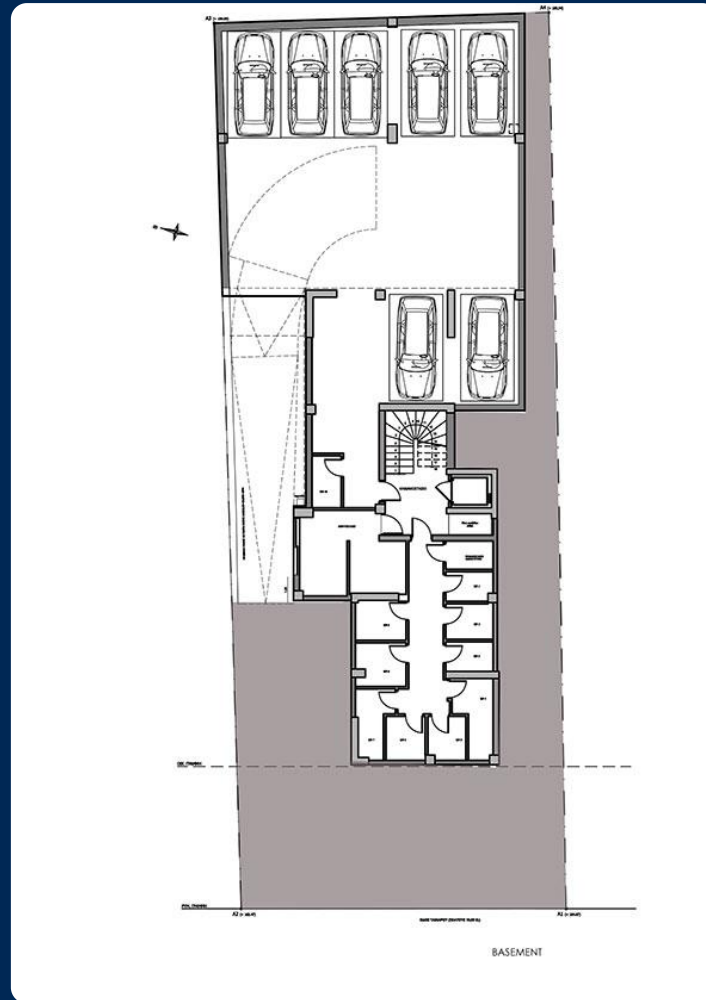
Amenities

- Airport 27 km
- School 0.4 km
- University 11.8 km
- Beach 4.23 km
- Hospital 4.1 km
- Shops 0.7 km
- Metro 3.2 km



Location

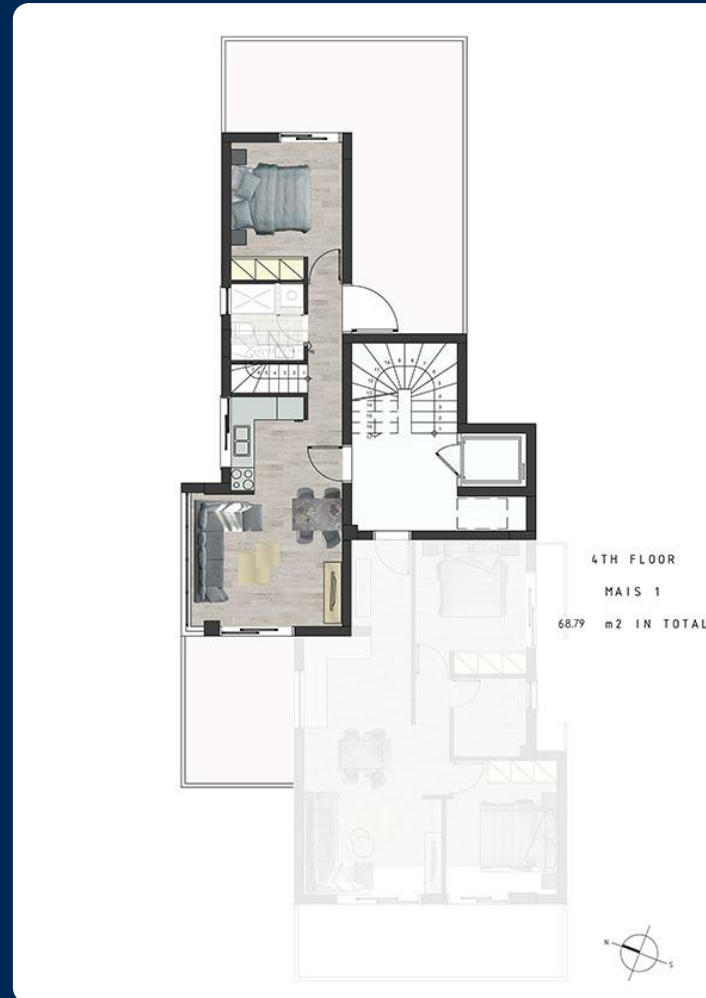
South, Glyfada















Unit Number	Level	Internal Area	Balconies	Bedrooms	Bathrooms	Parking	Storage	Status
I1	0	34.25m ²	20.54m ²	N/A	1	Yes	Yes	Available
A2	1	61.89m ²	26.9m ²	2	1	Yes	Yes	Sold
A1	1	61.39m ²	18.14m ²	2	1	Yes	Yes	Sold
B1	2	61.39m ²	18.14m ²	2	1	Yes	Yes	Sold
B2	2	61.89m ²	26.9m ²	2	1	Yes	Yes	Sold
C1	3	61.39m ²	18.14m ²	2	1	Yes	Yes	Sold
C2	3	61.89m ²	26.9m ²	2	1	Yes	Yes	Sold
Mais1	4	68.79m ²	38.85m ²	2	1	Yes	Yes	Sold
D1	4	61.39m ²	18.14m ²	2	1	Yes	Yes	Sold
E1	5	61.39m ²	18.14m ²	2	1	Yes	Yes	Sold



From A to Zafido

Quality Dertemines Everything !

For clients investing in Zafido, what matters is the quality of the property as well as its location and design. Our projects are done by experienced and well recognized architects and engineers.

30+

EXPERIENCE

250+

EMPLOYEES

500M+

PROPERTY PORTIFOLIO

Who we are

Located in the heart of the southern suburbs of Athens, we service the surrounding areas of Athens as well as regions outside of Attica. Integrity, trust and consistency are the foundation of our core values.

