



## GLYFADA - GENNIMATA 181

South, Glyfada



## Project Description

South, Glyfada

The building is located in the southern suburbs at the bottom of Mount Hymettus. Due to its location, three of the four floors share the beautiful view of the coastal seafont. The building extends into four levels offering five (one) bedroom apartments, three (two) bedroom apartments and one (three) bedroom apartments.



**Individual Heating- Natural Gas /  
Entrance Gate / Unobstructed Sea  
View / Elliniko project 5 minutes drive  
/ Glyfada Center 7 minutes drive / St.  
Lawrence International School 20  
minutes drive**

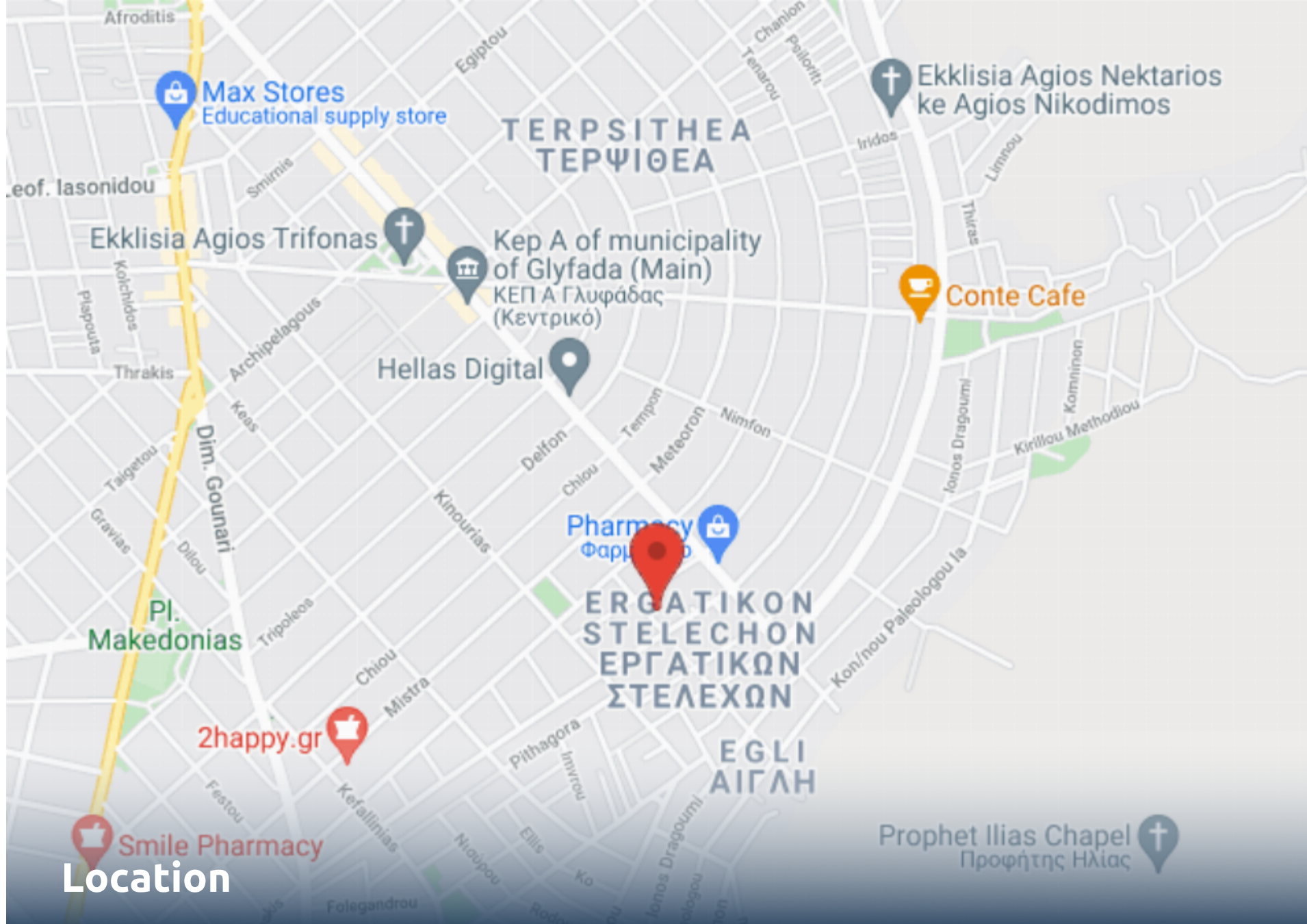
### **Property Features**

- Elevator
- Storage Space
- Sea View
- Floors Building
- Energy Grade: B+

### **Amenities**

- Airport 26.8 km
- School 0.13 km
- University 11.8 km
- Beach 3.6 km
- Hospital 0.41 km
- Shops 0.3 km







# Location

South, Glyfada



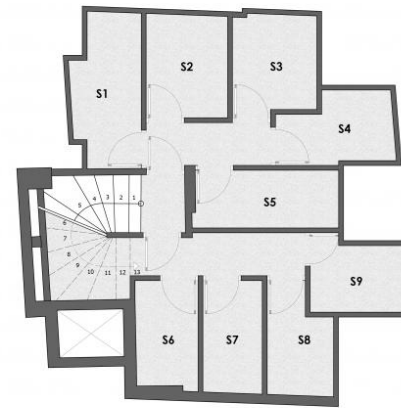
 Alex. Panagouli 17 16675 Glyfada Greece

 +30 210 89 43 809

 [www.zafido.gr](http://www.zafido.gr)

 [athens@zafido.gr](mailto:athens@zafido.gr)

GENNHMATA 181, ANO GLYFADA



Basement

GENNHMATA 181, ANO GLYFADA



GENNHMATA STREET

LEVEL 0











Unit Number	Level	Internal Area	Balconies	Bedrooms	Bathrooms	Parking	Storage	Status
I2	0	57.75m <sup>2</sup>	40.35m <sup>2</sup>	1	1	No	Yes	Sold
I1	0	44.65m <sup>2</sup>	18.9m <sup>2</sup>	1	1	No	Yes	Sold
A2	1	57.86m <sup>2</sup>	23.65m <sup>2</sup>	1	1	No	Yes	Sold
A1	1	69.32m <sup>2</sup>	13.51m <sup>2</sup>	2	1	No	Yes	Sold
B2	2	57.86m <sup>2</sup>	23.65m <sup>2</sup>	1	1	No	Yes	Sold
B1	2	69.32m <sup>2</sup>	13.51m <sup>2</sup>	2	1	No	Yes	Sold
C2	3	57.86m <sup>2</sup>	23.65m <sup>2</sup>	1	1	No	Yes	Sold
C1	3	69.32m <sup>2</sup>	13.51m <sup>2</sup>	2	1	No	Yes	Sold
D1	4	89.69m <sup>2</sup>	76.15m <sup>2</sup>	3	1	No	Yes	Sold



## From A to Zafido

### Quality Determines Everything !

For clients investing in Zafido, what matters is the quality of the property as well as its location and design. Our projects are done by experienced and well recognized architects and engineers.

**30+**

EXPERIENCE

**250+**

EMPLOYEES

**500M+**

PROPERTY PORTIFOLIO

### Who we are

Located in the heart of the southern suburbs of Athens, we service the surrounding areas of Athens as well as regions outside of Attica. Integrity, trust and consistency are the foundation of our core values.