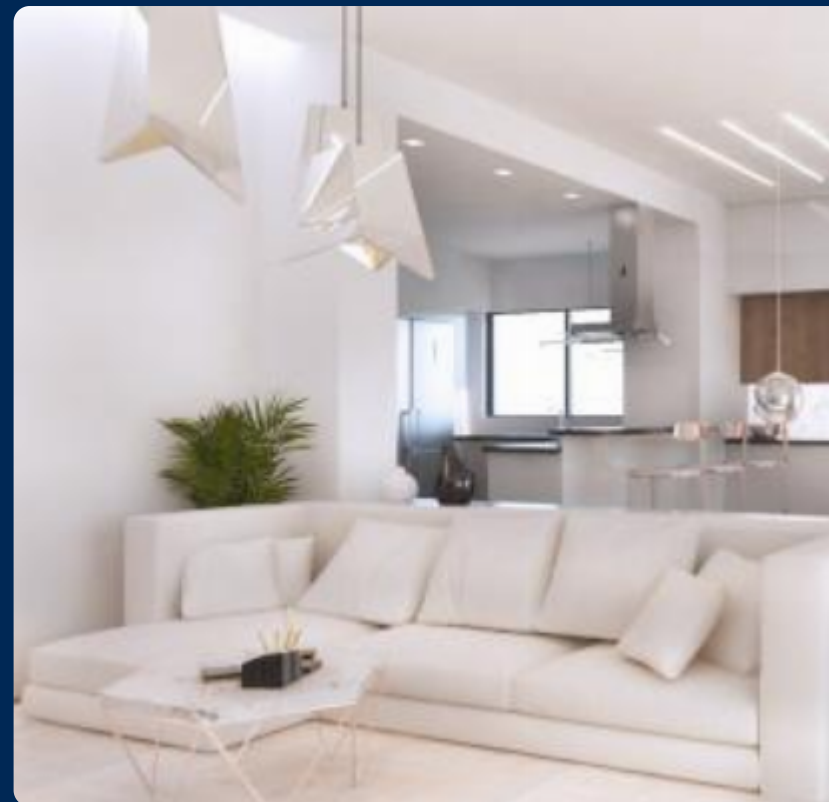


GLYFADA - ERMOU 29

South, Glyfada



Project Description

South, Glyfada

The project is located in the southern part of Athens close to the center of Glyfada in a quiet and sparsely populated area. The building extends into five levels offering three (one) bedroom maisonettes, two (one) bedroom apartments, two (two) bedroom apartments and two (three) bedroom apartments with a communal swimming pool based on the ground floor. Elongated balconies are located to the east and west side with large openings for easy access to both areas, inside and out.



Energy Efficiency A+ / Individual Heating – Natural Gas / Entrance Gate /Parking Area /Storage room /Common Swimming Pool /Garden / Glyfada Center: 7 minutes walk

Property Features

- Elevator
- Storage Space
- Common Swimming Pool
- Floors Building
- Energy Grade: A+

Amenities


- Airport 22.9 km
- School 0.4 km
- University 15.8 km
- Beach 1 km
- Hospital 0.55 km
- Shops 0.5 km




Location

South, Glyfada

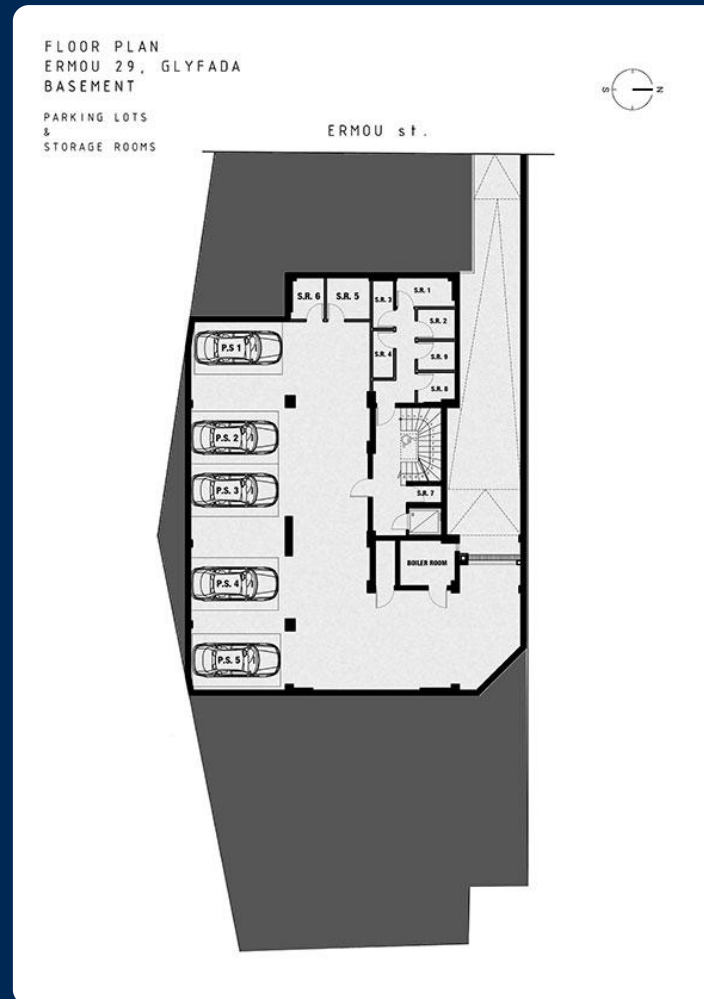


 Alex. Panagouli 17 16675 Glyfada Greece

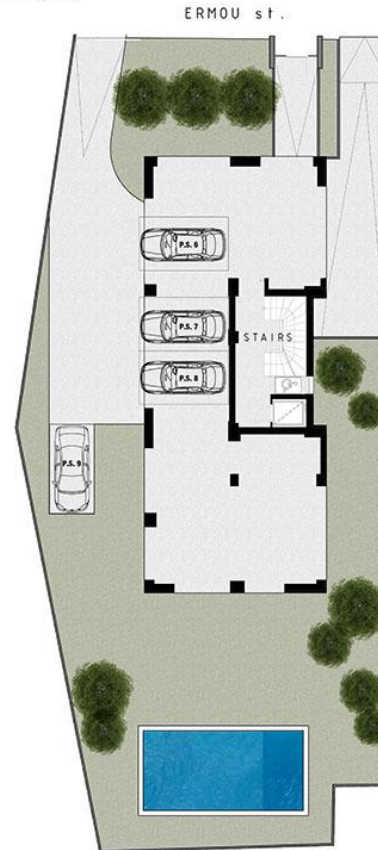
 +30 210 89 43 809

 www.zafido.gr

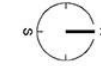
 athens@zafido.gr



FLOOR PLAN
ERMOU 29, GLYFADA
GROUND FLOOR



FLOOR PLAN
ERMOU 29, GLYFADA
FIRST FLOOR



ERMOU st.



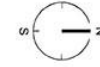
FLOOR PLAN
ERMOU 29, GLYFADA
SECOND FLOOR



ERMOU st.



FLOOR PLAN
ERMOU 29, GLYFADA
THIRD FLOOR



ERMOU st.

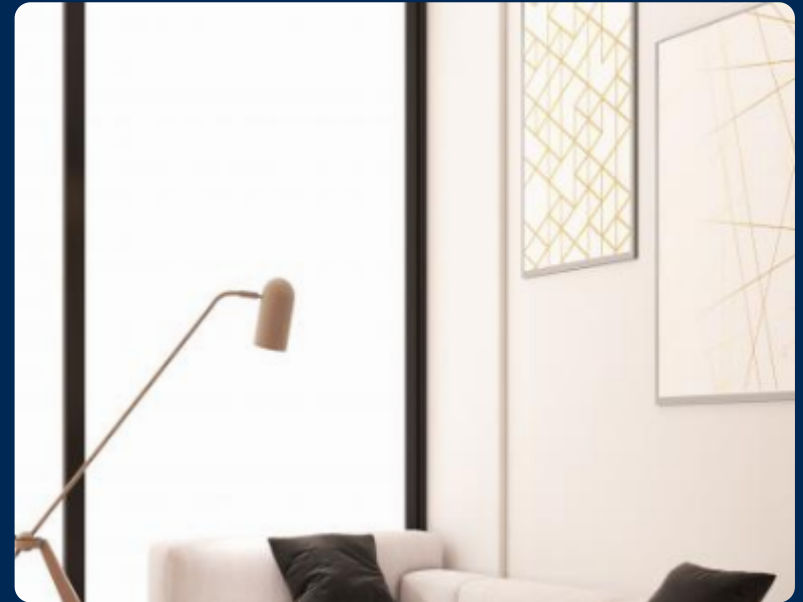


FLOOR PLAN
ERMOU 29, GLYFADA
FOURTH-FIFTH FLOOR
APARTMENT D1/E1



ERMOU st.







Unit Number	Level	Internal Area	Balconies	Bedrooms	Bathrooms	Parking	Storage	Status
Mais 2	1	55.86m ²	12.8m ²	1	1	Yes	Yes	Sold
Mais 1	1	55.76m ²	10.66m ²	1	1	Yes	Yes	Sold
Mais 3	1	66.73m ²	7.45m ²	1	1	Yes	Yes	Sold
A1	1	45.75m ²	14.9m ²	1	1	Yes	Yes	Sold
B1	2	45.75m ²	14.96m ²	1	1	Yes	Yes	Sold
C1	3	74.38m ²	28.96m ²	2	1	Yes	Yes	Sold
C2	3	64.37m ²	32.5m ²	2	1	Yes	Yes	Sold
D1	4	155.31m ²	56.05m ²	3	2	Yes	Yes	Available
E1	5	155.31m ²	56.05m ²	3	2	Yes	Yes	Available





From A to Zafido

Quality Dertemines Everything !

For clients investing in Zafido, what matters is the quality of the property as well as its location and design. Our projects are done by experienced and well recognized architects and engineers.

30+

EXPERIENCE

250+

EMPLOYEES

500M+

PROPERTY PORTIFOLIO

Who we are

Located in the heart of the southern suburbs of Athens, we service the surrounding areas of Athens as well as regions outside of Attica. Integrity, trust and consistency are the foundation of our core values.

