



AG. DIMITRIOS - ASYRMATOU 58-60

South, Agios Dimitrios



Project Description

South, Agios Dimitrios

The building is located in the area of Agios Dimitrios between the city center and the southern suburbs as well as being within close reach of the Metro Mall. Its favorable position situated on a hill resents an optical advantage to its topfloor occupants by enabling them to view the beautiful sight of the deep blue Mediterranean Sea. Its perfectorientation combined with its unique shape enhances the placement of varying sized balconies positioned in differinglocations adjoining superbly with the living rooms and bedrooms of the spacious and bright apartments.



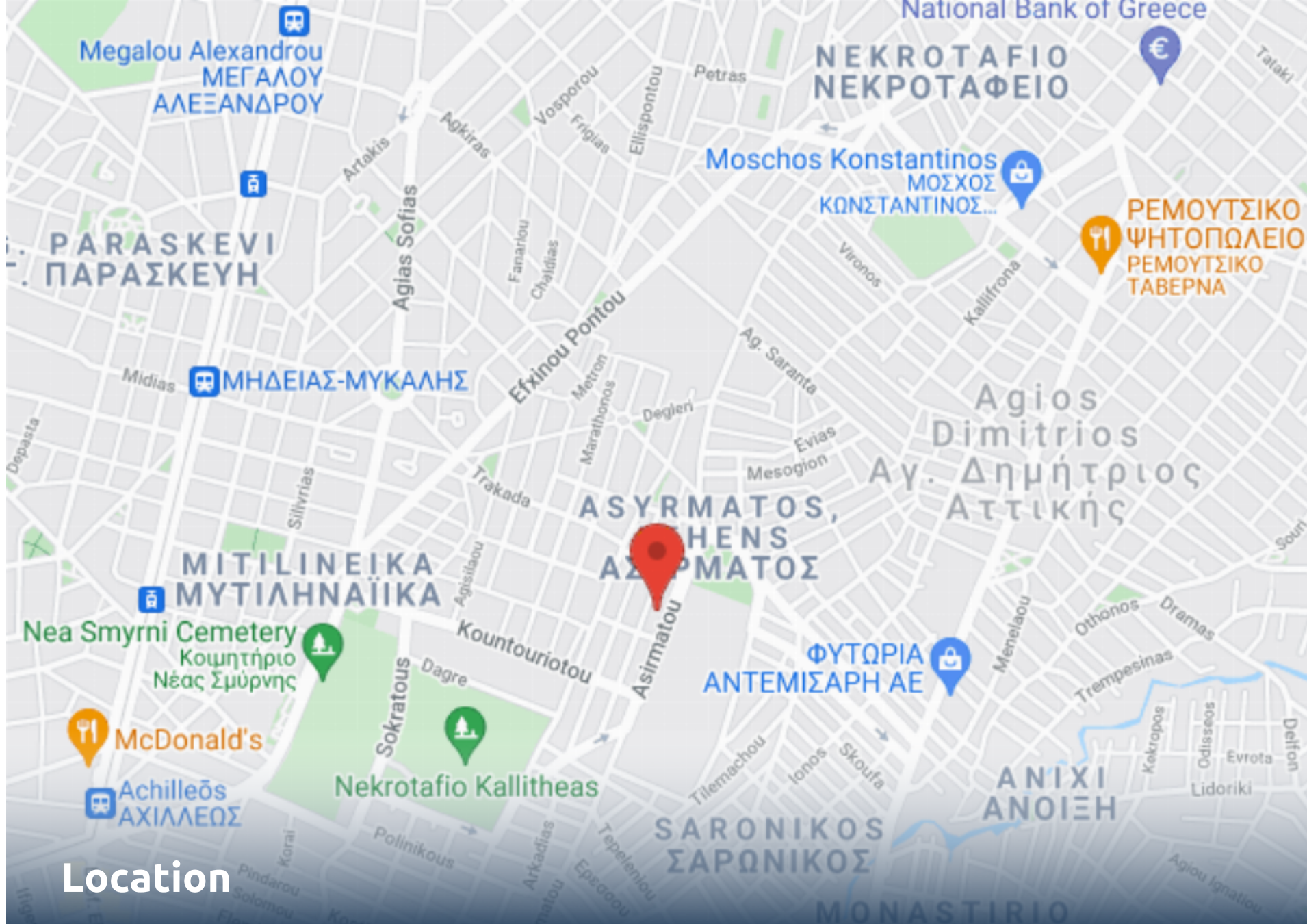
Individual Heating-Oil / Parking Area

Property Features

- Elevator
- Storage Space
- Floors Building
- Sea View

Amenities


- Airport 30 km
- School 0.4 km
- University 6.6 km
- Beach 2.56 km
- Hospital 5.8 km
- Shops 0.21 km
- Tram 1 km
- Metro 2 km




Location

South, Agios Dimitrios



 Alex. Panagouli 17 16675 Glyfada Greece

 +30 210 89 43 809

 www.zafido.gr

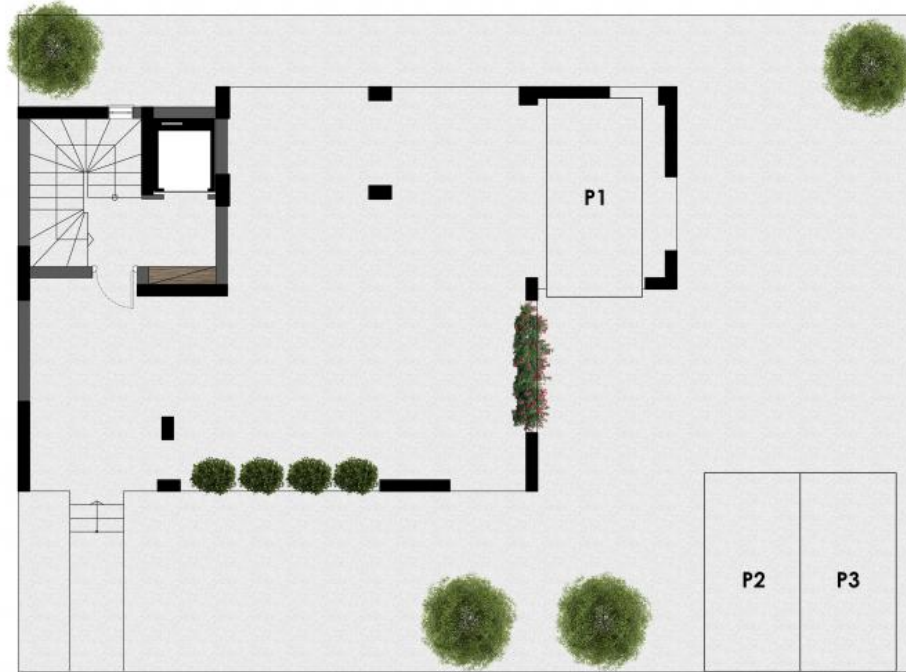
 athens@zafido.gr

ASYRMATOU 58-60, AG.DIMITRIOS



Basement

ASYRMATOU 58-60, AG.DIMITRIOS



Groundfloor

ASYRMATOU 58-60, AG.DIMITRIOS



First / Second Floor
Scale 1:50
A1 / B1 = 98.80 m²
Balconies = 21.86 m²

ASYRMATOU 58-60, AGIOS DIMITRIOS



Third Floor
Scale 1:50
C1 = 97.55 m
Balconies = 22.63 m

ASYRMATOU 58-60, AGIOS DIMITRIOS



ASYRMATOU 58-60, AGIOS DIMITRIOS



Fifth Floor
Scale 1:50
M1 (D1+E1) = **73.70** + 18.06 = 91.76 m²
Balconies = **43.84** + 52.00 = 95.84 m²





Unit Number	Level	Internal Area	Balconies	Bedrooms	Bathrooms	Parking	Storage	Status
A1	1	98.8m ²	21.86m ²	3	1	No	Yes	Sold
B1	2	98.8m ²	21.86m ²	3	1	Yes	Yes	Available
C1	3	97.55m ²	22.63m ²	3	1	Yes	Yes	Sold
Mais D1-E1	4	91.76m ²	95.84m ²	3	1	Yes	Yes	Sold





From A to Zafido

Quality Dertemines Everything !

For clients investing in Zafido, what matters is the quality of the property as well as its location and design. Our projects are done by experienced and well recognized architects and engineers.

30+

EXPERIENCE

250+

EMPLOYEES

500M+

PROPERTY PORTIFOLIO

Who we are

Located in the heart of the southern suburbs of Athens, we service the surrounding areas of Athens as well as regions outside of Attica. Integrity, trust and consistency are the foundation of our core values.

