



# SOUTH

**SEA VIEW**

Contracts can be done immediately  
Delivery: 1<sup>st</sup> Quarter 2020

SARDEON & ARKADIAS ,  
GLYFADA (AH11)





Type	sqm	Balcony sqm	Floor	Parking	S/R	B/R	Price € (Including TAX)
MAIS GF1	67.72	76.38 Garden	Ground	Yes	Yes	2	<b>SOLD</b>
MAIS GF2	51.63	44.67 Garden	Ground	Yes	Yes	1	<b>SOLD</b>
APT A1*	58.33	15	1	Yes	Yes	2	<b>SOLD</b>
APT A2*	59.09	29	1	Yes	Yes	2	<b>SOLD</b>
APT B1*	60.82	15	2	Yes	Yes	2	<b>SOLD</b>
APT B2*	59.09	29	2	Yes	Yes	2	<b>SOLD</b>

**\*SEA VIEW**





Type	sqm	Balcony sqm	Floor	Parking	S/R	B/R	Price € (Including TAX)
APT C1*	60.82	15	3	Yes	Yes	2	<b>SOLD</b>
APT C2*	59.09	29	3	Yes	Yes	2	<b>SOLD</b>
APT D1*	58.33	15	4	Yes	Yes	2	<b>SOLD</b>
APT D2*	59.09	29	4	Yes	Yes	2	<b>SOLD</b>
APT E1*	19	39.52 Terrace	5	-	-	-	<b>RESERVED</b>

**\*SEA VIEW**



GROUND FLOOR  
GF1 : 67.72 sqm - Garden : 76.38sqm





MEZZANINE FLOOR  
GF1 : 67.72 sqm - Garden : 76.38sqm



GROUND FLOOR  
GF2 : 51.63 sqm - Garden : 44.67sqm







MEZZANINE FLOOR

GF2 : 51.63 sqm - Garden : 44.67sqm









1st & 4th Floor- APT A1 & D1- 58.33m<sup>2</sup>

Balconies : 15 m<sup>2</sup> in total













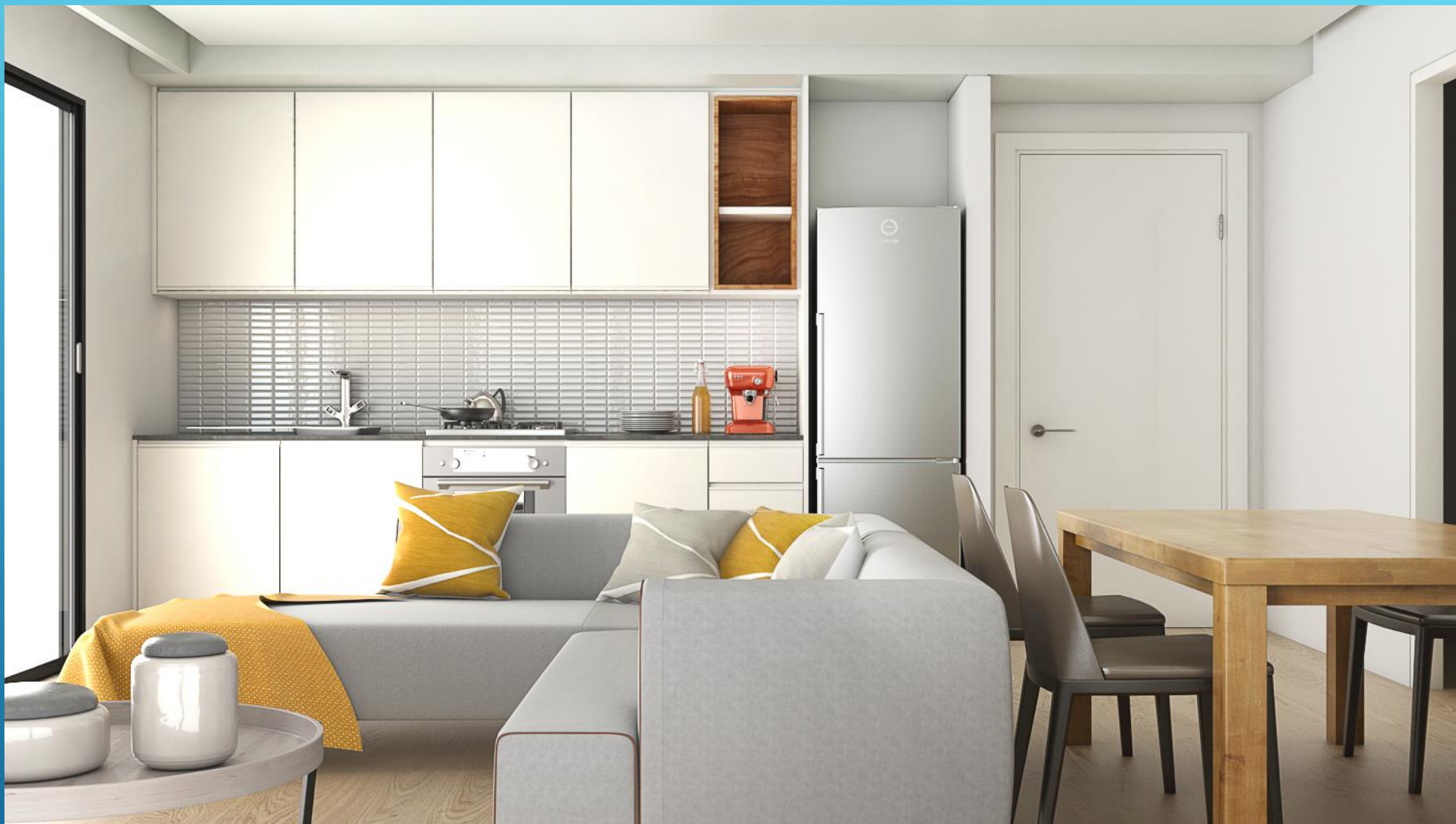


TYPICAL FLOOR

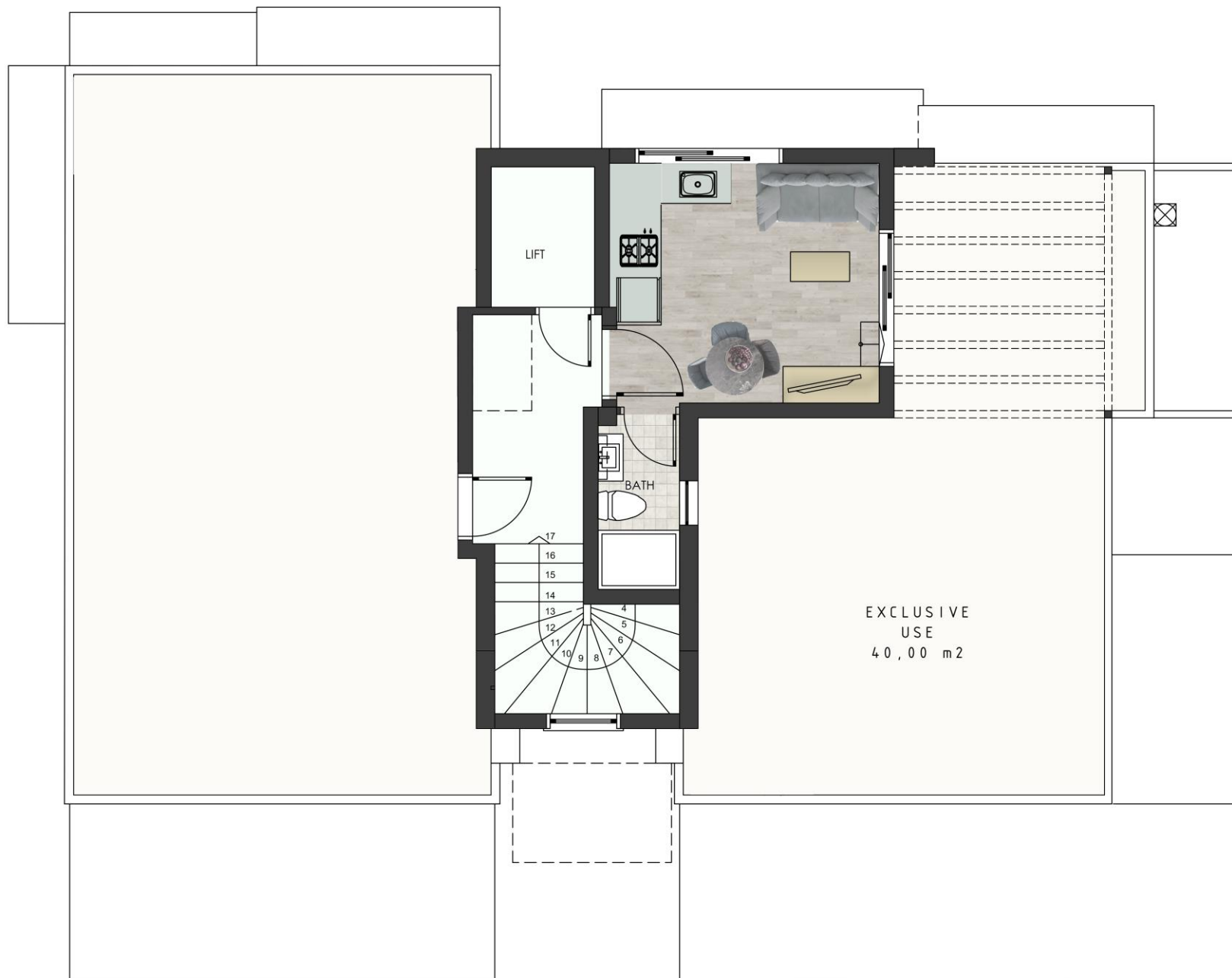












5th FLOOR

APT E1

19.21m<sup>2</sup>





# LOCATION AND BRIEF INFO

