



NEA FILOTHEI - SIMEONOGLOU 11

Center - North, Nea Filothei



Project Description

Center - North, Nea Filothei

The building is positioned in one of the most elite and luxurious areas of Athens. Its unique location combined with its panoramic view in addition to its southern based alignment exhibits its superiority. The construction is founded on an elegant and graceful minimal design that is displayed in its architectural composition utilizing material of varying forms, thicknesses and contours that are further emphasized on the higher floors where by incredible breathtaking views of the entire city are assured. A swimming pool for exclusive occupant use is based at the back of the building. The glass is widely used both on the facades of the building and on the protective railings, thus allowing optimal contact.



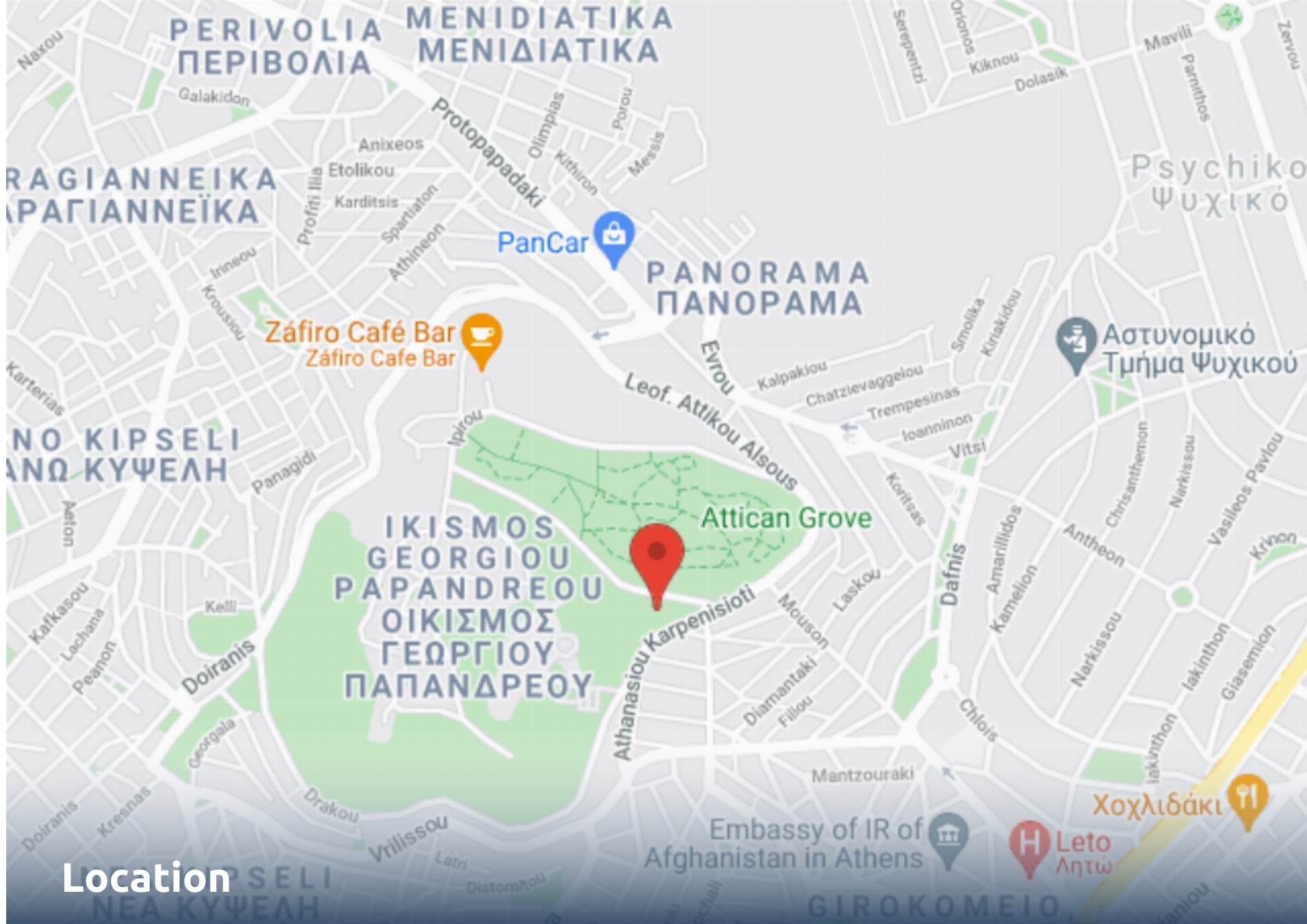
**Energy Efficiency A / Exclusive
Swimming Pool – Maisonette 1
/Acropolis View / Sea View /**

Property Features

- Elevator
- Private Swimming Pool
- Floors Building

Amenities

- Airport 31 km
- School 1 km
- University 2 km
- Beach 10 km
- Hospital 2 km
- Shops 1.2 km
- Metro 1.13 km



Location

Center - North, Nea Filothei



SIMEONOGLOU 11, ATHENS



SIMEONOGLOU Str

THIRD FLOOR

SIMEONOGLOU 11, ATHENS



SIMEONOGLOU Str

FIFTH FLOOR

SIMEONOGLOU 11, ATHENS



SIMEONOGLOU Str

SECOND FLOOR

SIMEONOGLOU 11, ATHENS



SIMEONOGLOU Str

GROUND FLOOR

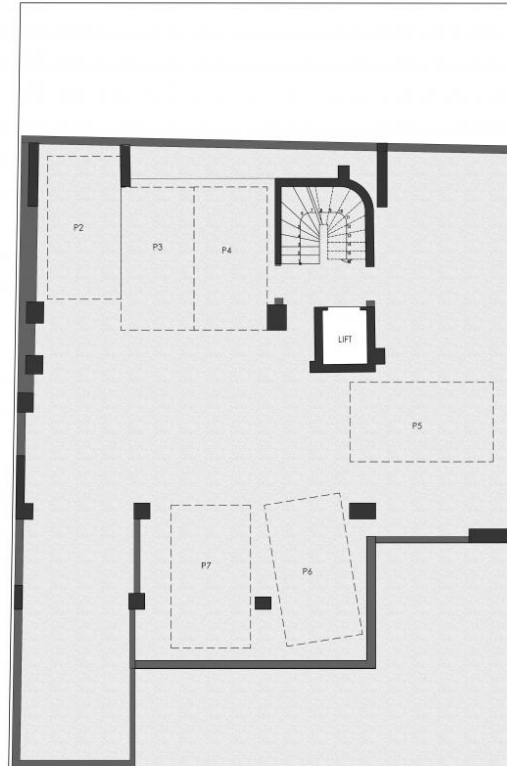
SIMEONOGLOU 11, ATHENS



SIMEONOGLOU Str

FIRST FLOOR

SIMEONOGLOU 11, ATHENS



SIMEONOGLOU Str

BASEMENT

SIMEONOGLOU 11, ATHENS



SIMEONOGLOU Str

FOURTH FLOOR





Unit Number	Level	Internal Area	Balconies	Bedrooms	Bathrooms	Parking	Storage	Status
Gf1	0	86.65m ²	19.62m ²	2	2	Yes	No	Available
A1	1	87.86m ²	37.16m ²	2	2	Yes	No	Available
Mais 1	1	98.79m ²	92.1m ²	2	1	Yes	No	Available
B1	2	91.53m ²	11.6m ²	2	2	Yes	No	Available
C1	3	142.66m ²	42.68m ²	3	2	Yes	No	Available
D1	4	104.54m ²	74.72m ²	2	1	Yes	No	Available
E1	5	61.64m ²	55.74m ²	1	1	Yes	No	Available



From A to Zafido

Quality Dertemines Everything !

For clients investing in Zafido, what matters is the quality of the property as well as its location and design. Our projects are done by experienced and well recognized architects and engineers.

30+

EXPERIENCE

250+

EMPLOYEES

500M+

PROPERTY PORTIFOLIO

Who we are

Located in the heart of the southern suburbs of Athens, we service the surrounding areas of Athens as well as regions outside of Attica. Integrity, trust and consistency are the foundation of our core values.