




# ATHENS - ILIDOS AND LEVADEIAS 35

Center, Goudi



 Alex. Panagouli 17 16675 Glyfada Greece

 +30 210 89 43 809

 [www.zafido.gr](http://www.zafido.gr)

 [athens@zafido.gr](mailto:athens@zafido.gr)



## Project Description

### Center, Goudi

The building is constructed on a corner plot opposite a picturesque park in a quiet residential area creating an ideal setting for optimal utilization of both daylight and ventilation, having both sides facing south creating a perfect setting in which you have warmth of the sun during the day and the soothing coolness during the evening. The apartments are with large glass balconies overlooking the side of the park with beautiful view of vegetation enjoyed from all floors. Great care and focus were placed in its architecture to achieve a beautiful outcome, with the carefully selected use of earthy shades of colours with hues of white creating a warm and modern note.



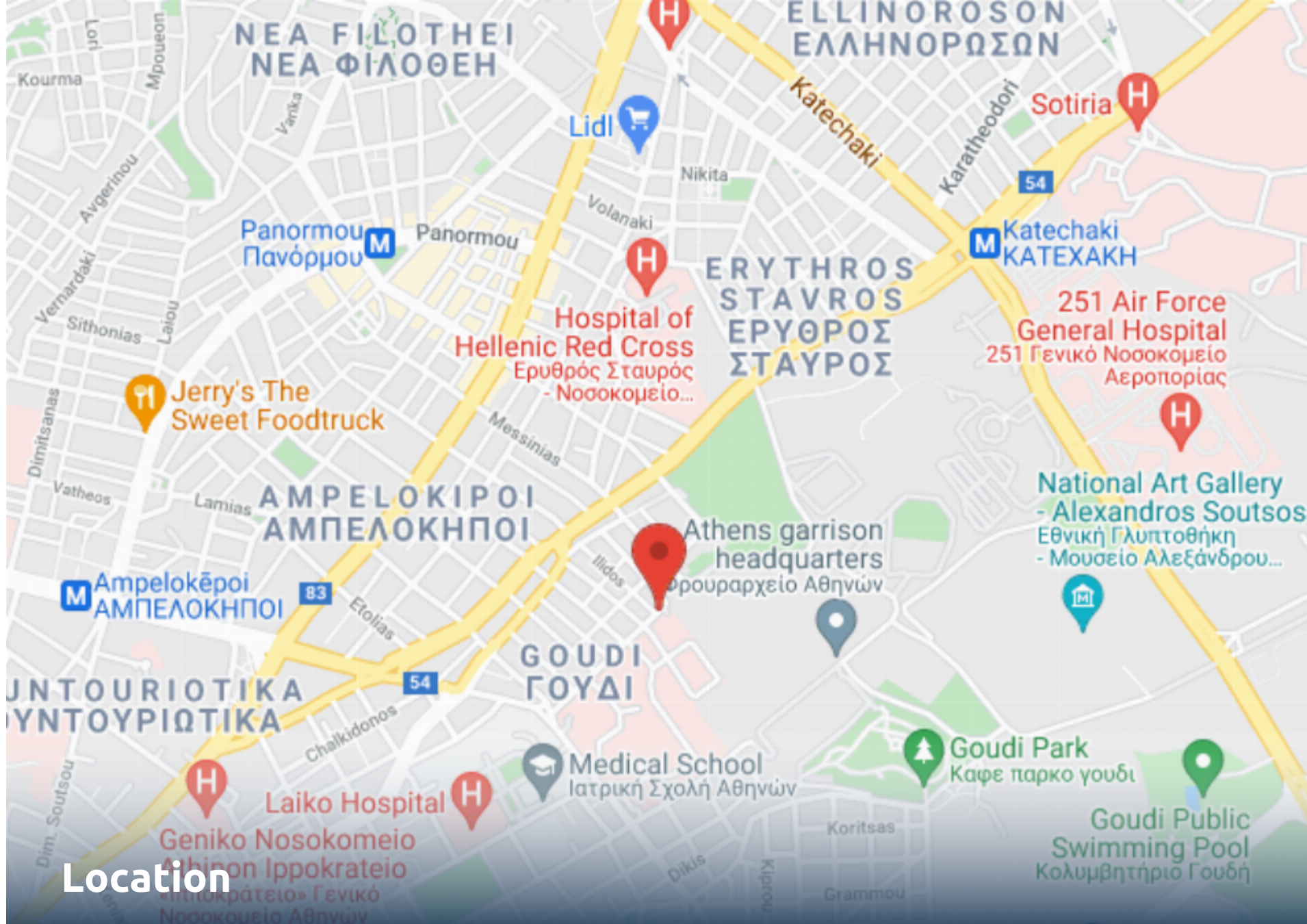
**Energy Efficiency B+ Individual Heating**  
 – Natural Gas Entrance Gate Storage  
 Room Double Glazed windows  
 Embassy Area 1.5 Km Syntagma  
 Square: 2.8 Km

### Property Features

- Elevator
- Storage Space
- Floors Building


### Amenities


- Airport 39.4 km
- School 1 km
- University 0.5 km
- Beach 9.51 km
- Hospital 0.5 km
- Shops 0.4 km



**Location**  
Center, Goudi



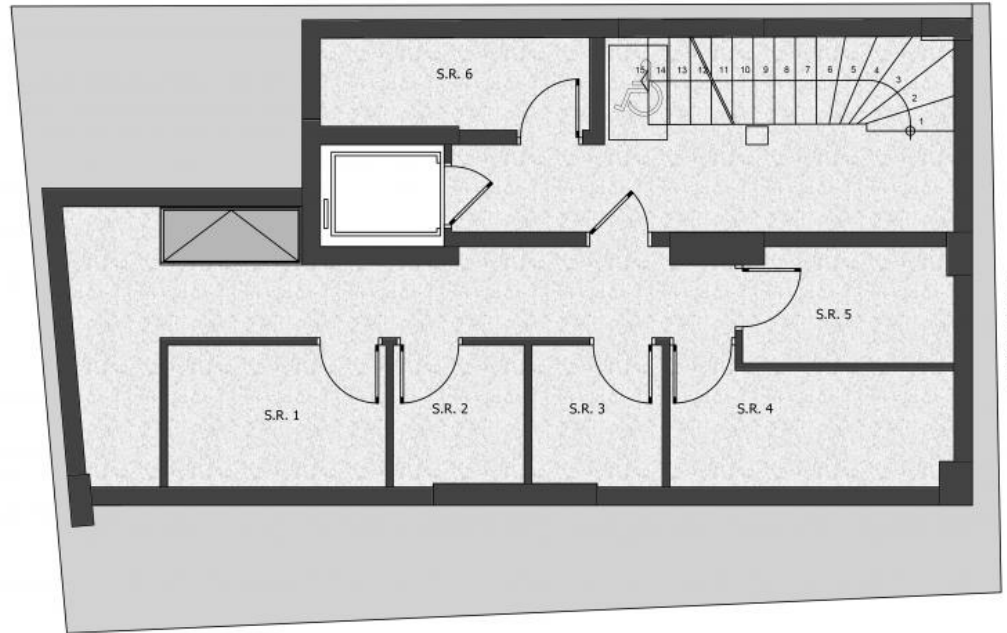
 Alex. Panagouli 17 16675 Glyfada Greece

 +30 210 89 43 809

 [www.zafido.gr](http://www.zafido.gr)

 [athens@zafido.gr](mailto:athens@zafido.gr)

ILIDOS & LEVADEIAS, ATHINA

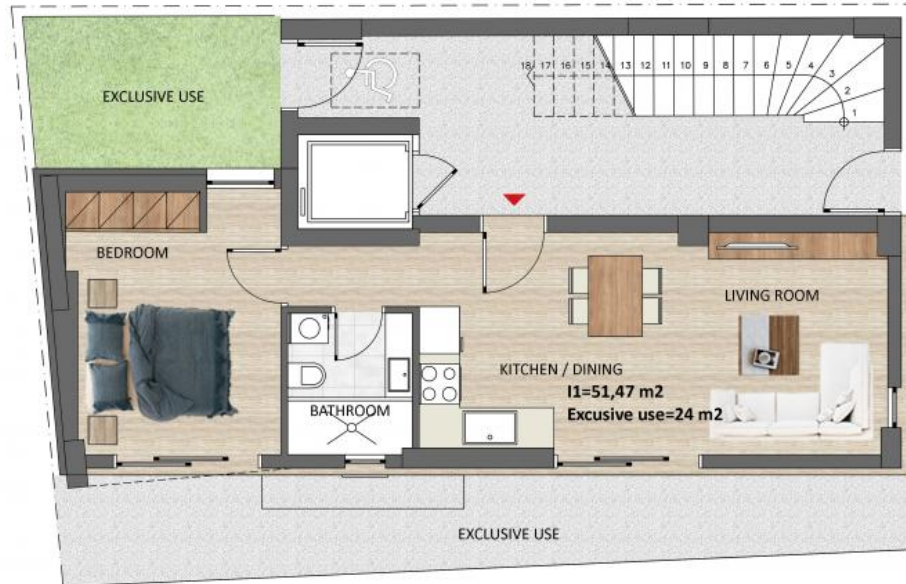


ILIDOS Str

LEVADEIAS Str

GROUND FLOOR

ILIDOS & LEVADEIAS, ATHINA

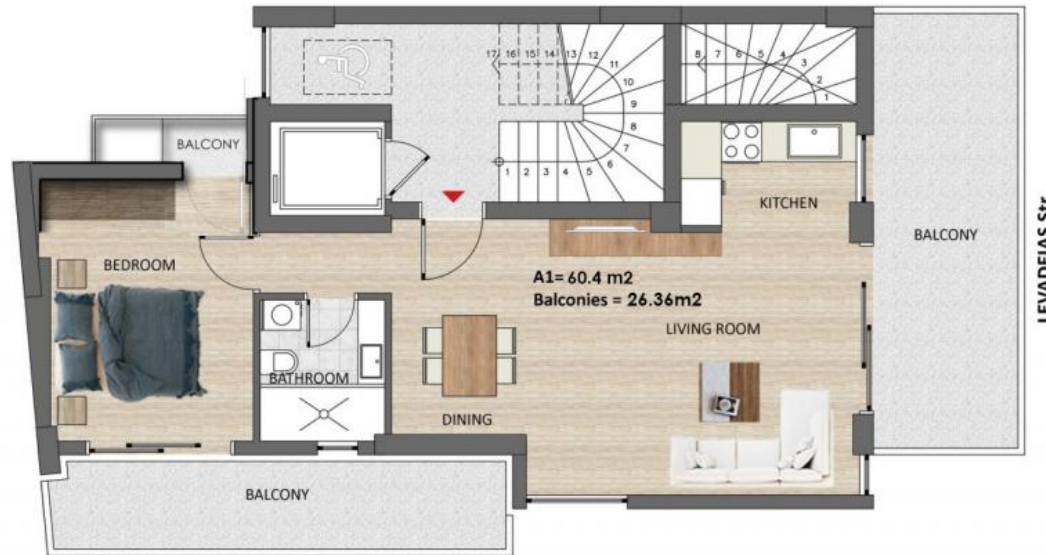


LEVADEIAS Str

ILIDOS Str

GROUND FLOOR

ILIDOS & LEVADEIAS, ATHINA



ILIDOS Str

FIRST FLOOR

ILIDOS & LEVADEIAS, ATHINA



ILIDOS Str

SECOND / THIRD FLOOR



ILIDOS & LEVADEIAS, ATHINA

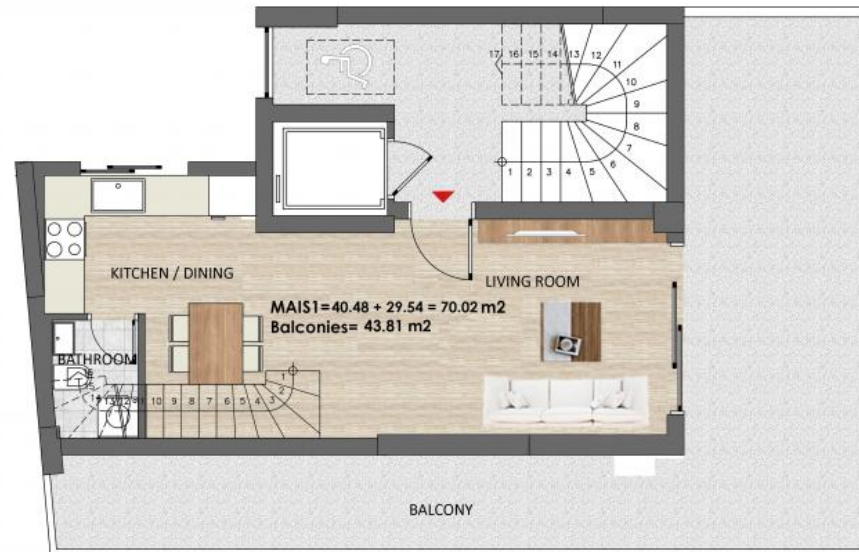


ILIDOS Str

LEVADEIAS Str

FOURTH FLOOR

ILIDOS & LEVADEIAS, ATHINA



ILIDOS Str

FIFTH FLOOR

ILIDOS & LEVADEIAS, ATHINA



LEVADEIAS Str

ILIDOS Str

SIXTH FLOOR





Unit Number	Level	Internal Area	Balconies	Bedrooms	Bathrooms	Parking	Storage	Status
I1	0	51.47m <sup>2</sup>	24m <sup>2</sup>	1	1	No	Yes	Sold
A1	1	60.4m <sup>2</sup>	26.36m <sup>2</sup>	1	1	No	Yes	Sold
B1	2	67.98m <sup>2</sup>	20.04m <sup>2</sup>	2	1	No	Yes	Sold
C1	3	67.98m <sup>2</sup>	20.04m <sup>2</sup>	2	1	No	Yes	Sold
D1	4	63.7m <sup>2</sup>	31.44m <sup>2</sup>	2	1	No	Yes	Sold
Mais (E & St)	5	70.02m <sup>2</sup>	43.81m <sup>2</sup>	1	2	No	Yes	Sold





## From A to Zafido

### Quality Dertemines Everything !

For clients investing in Zafido, what matters is the quality of the property as well as its location and design. Our projects are done by experienced and well recognized architects and engineers.

**30+**

EXPERIENCE

**250+**

EMPLOYEES

**500M+**

PROPERTY PORTIFOLIO

### Who we are

Located in the heart of the southern suburbs of Athens, we service the surrounding areas of Athens as well as regions outside of Attica. Integrity, trust and consistency are the foundation of our core values.

