




# DAFNI - IPEIROU 10

Center, Dafni



 Alex. Panagouli 17 16675 Glyfada Greece

 +30 210 89 43 809

 [www.zafido.gr](http://www.zafido.gr)

 [athens@zafido.gr](mailto:athens@zafido.gr)



## Project Description

### Center, Dafni

The building is located in the southern part of central Athens. In recent years the area of Daphne has developed at rapid speed, broadening its central region even further. The structure itself is of a unique and balanced design presented in its graceful appearance as it modestly evolves into five floors comprising of three maisonettes and six apartments. Beautiful balconies are visible on both the East and West side of the building featuring glass pointed protectors that further enhance a regard modern detail accentuating its distinctiveness. Unifying the interior of the living room with the exterior balcony large openings have been incorporated for easy access to both areas. In addition, particular emphasis has been placed upon the colour tones of the building and balconies to create the impressions of a partition from the dominant part of the structure.



Alex. Panagouli 17 16675 Glyfada Greece



+30 210 89 43 809



[www.zafido.gr](http://www.zafido.gr)



[athens@zafido.gr](mailto:athens@zafido.gr)



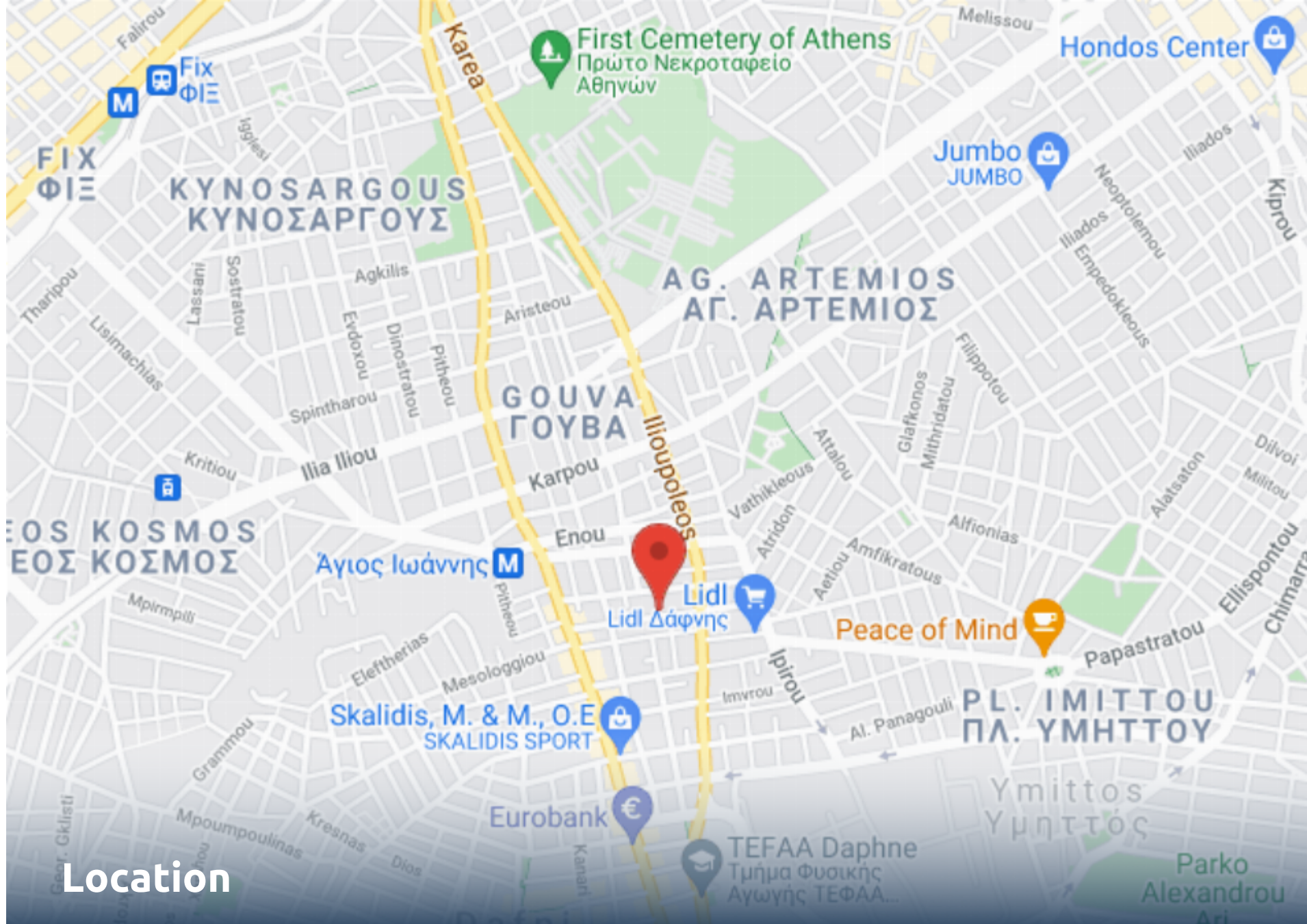
**Energy Efficiency B+, - Acropolis  
View**Close to Syntagma Square -City  
center, Individual Heating – Natural  
gas, Storage Room, Double Glazed  
Windows

### Property Features

- Elevator
- Storage Space
- Floors Building

### Amenities


- Airport 32 km
- School 1.6 km
- University 0.54 km
- Beach 5.47 km
- Hospital 1 km
- Shops 0.5 km



## Location

Center, Dafni

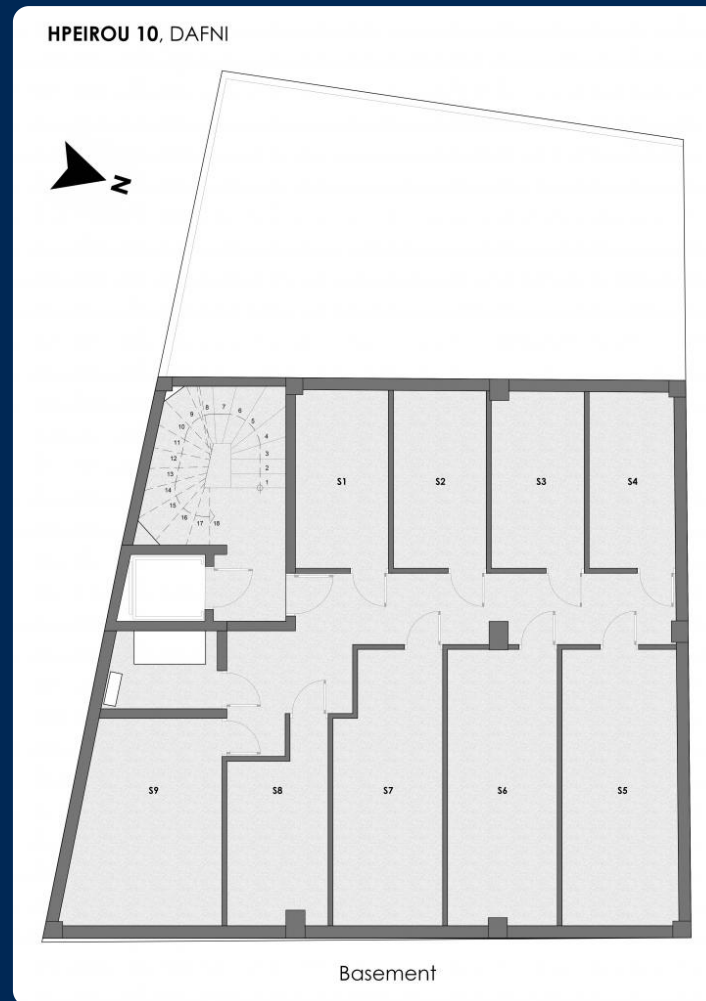


 Alex. Panagouli 17 16675 Glyfada Greece

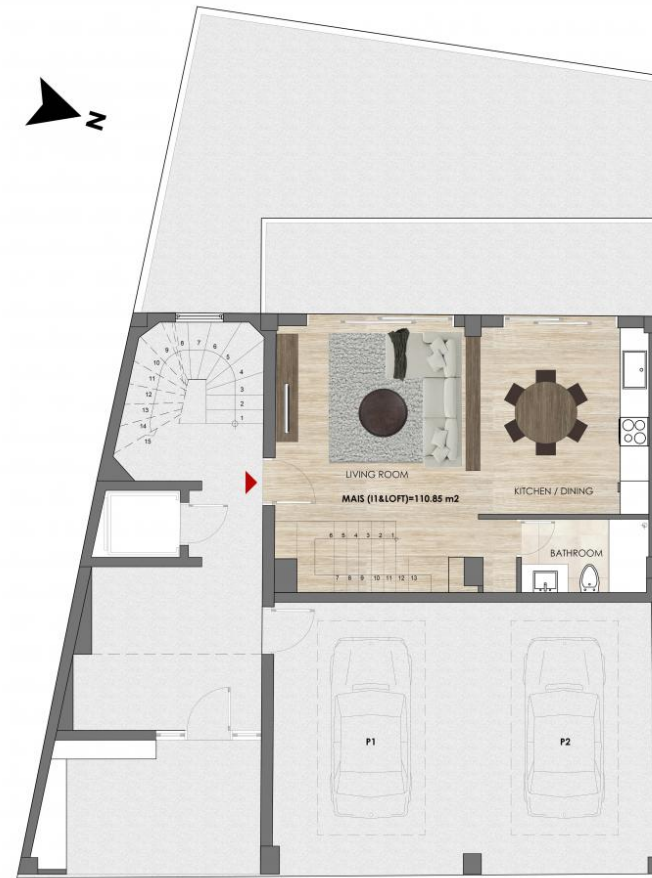
 +30 210 89 43 809

 [www.zafido.gr](http://www.zafido.gr)

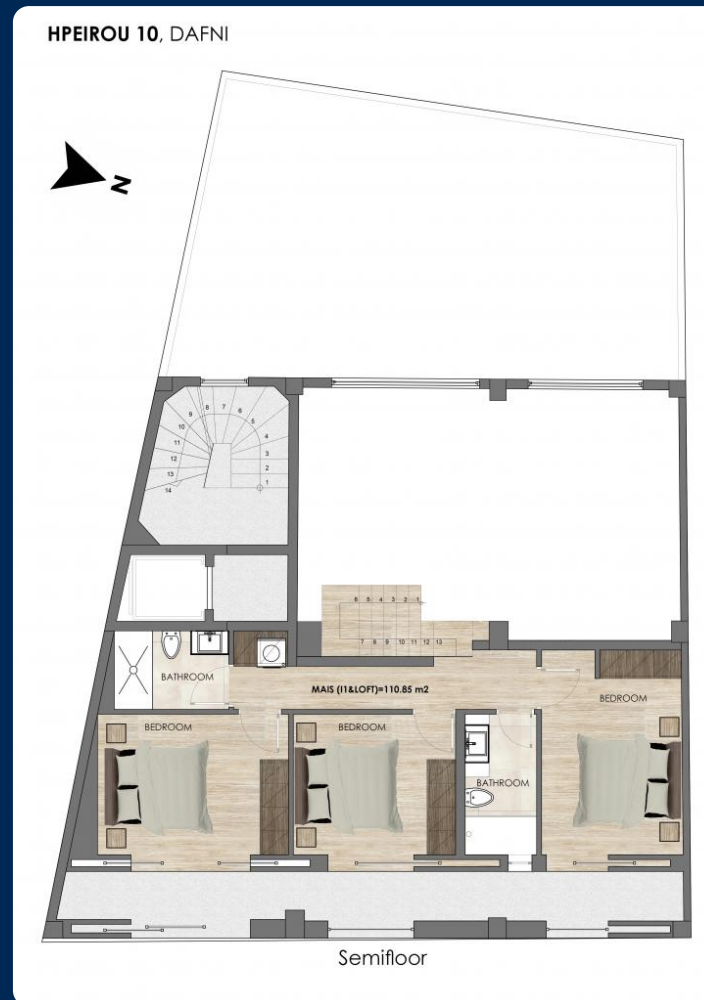
 [athens@zafido.gr](mailto:athens@zafido.gr)



HPEIROU 10, DAFNI



Groundfloor

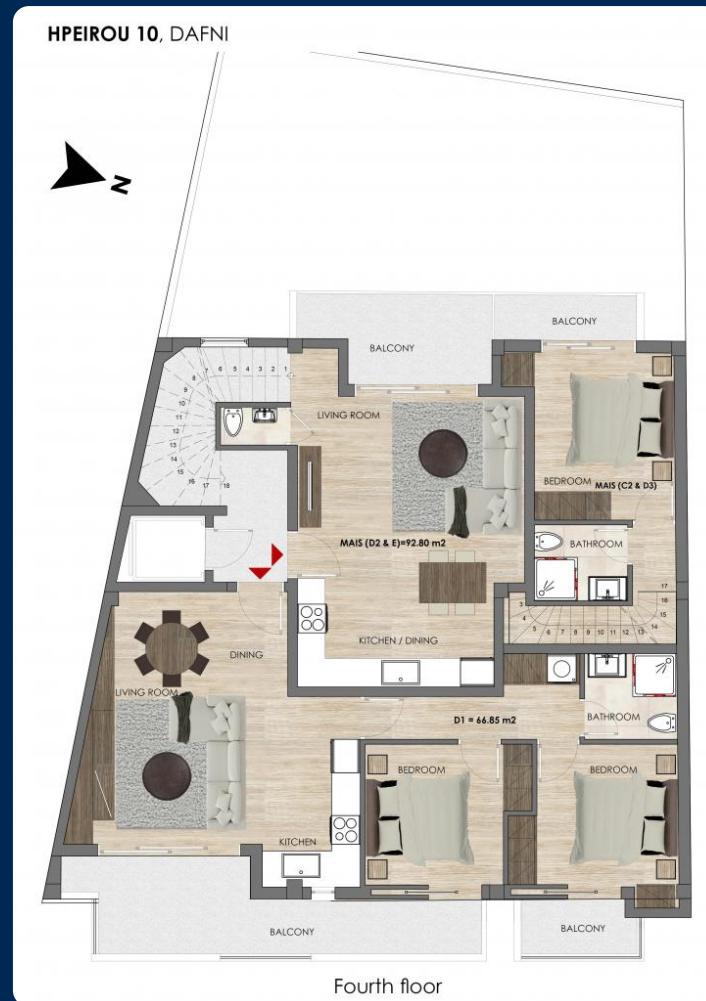














Unit Number	Level	Internal Area	Balconies	Bedrooms	Bathrooms	Parking	Storage	Status
Mais (I & Loft)	0	110.85m <sup>2</sup>	59.93m <sup>2</sup>	3	3	Yes	Yes	Sold
A2	1	54.75m <sup>2</sup>	10.39m <sup>2</sup>	1	1	No	Yes	Sold
A1	1	66.85m <sup>2</sup>	17.53m <sup>2</sup>	2	1	No	Yes	Sold
B2	2	54.75m <sup>2</sup>	10.39m <sup>2</sup>	1	1	No	Yes	Sold
B1	2	66.85m <sup>2</sup>	17.53m <sup>2</sup>	2	1	No	Yes	Sold
Mais (C2 & D3)	3	77.73m <sup>2</sup>	13.55m <sup>2</sup>	2	2	No	Yes	Sold
C1	3	66.85m <sup>2</sup>	17.53m <sup>2</sup>	2	1	No	Yes	Sold
D1	4	66.85m <sup>2</sup>	17.53m <sup>2</sup>	2	1	No	Yes	Sold
Mais (D2 & E)	4	92.8m <sup>2</sup>	97.6m <sup>2</sup>	2	2	Yes	Yes	Available



## From A to Zafido

### Quality Dertemines Everything !

For clients investing in Zafido, what matters is the quality of the property as well as its location and design. Our projects are done by experienced and well recognized architects and engineers.

**30+**

EXPERIENCE

**250+**

EMPLOYEES

**500M+**

PROPERTY PORTIFOLIO

### Who we are

Located in the heart of the southern suburbs of Athens, we service the surrounding areas of Athens as well as regions outside of Attica. Integrity, trust and consistency are the foundation of our core values.

