



## GLYFADA - ATTIKIS 35

South, Glyfada



## Project Description

### South, Glyfada

The building is located at the bottom of Mount Hymettus, in a quiet residential area above the bustling center of Glyfada. The favorable south-east orientation of the plot creates an ideal setting for optimal utilization of the daylight and creates a pleasant living space within the apartments. The softly curved balconies embrace the building, while the glass in the façade allows the outside space to adjoin the inside. The building comprises of eight one-bedroom apartments and three maisonettes.



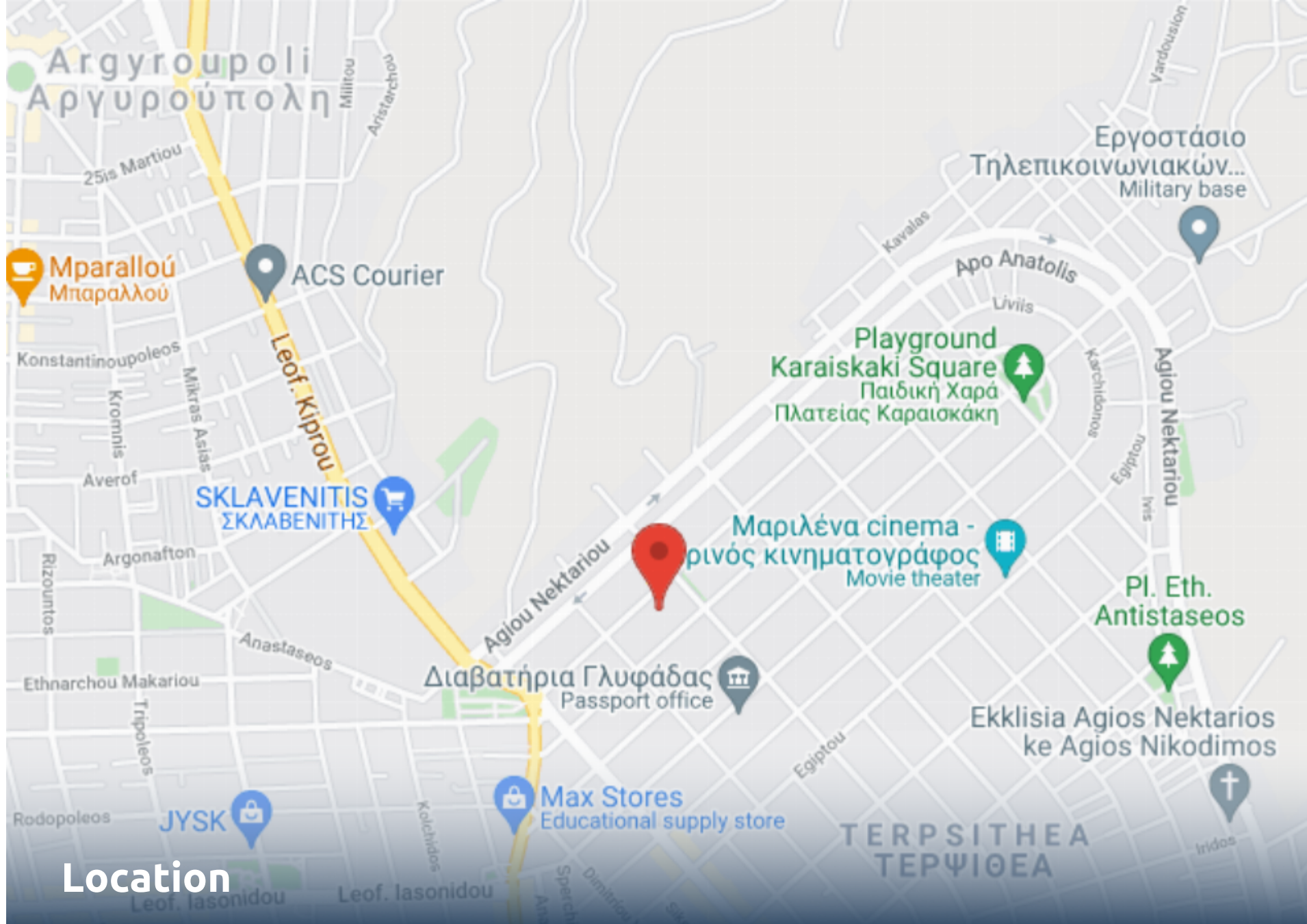
**Energy Efficiency A+, Entrance Gate, Parking Area Storage room for every unit, Charging Plugs for Electric Cars, Photovoltaic mounting system on the rooftop, Italian kitchens/ Grohe Mixers, Solar Panels Glyfada Center within 7 minutes drive, Elliniko Project within 5 minutes drive**

### **Property Features**

- Elevator
- Storage Space
- Floors Building

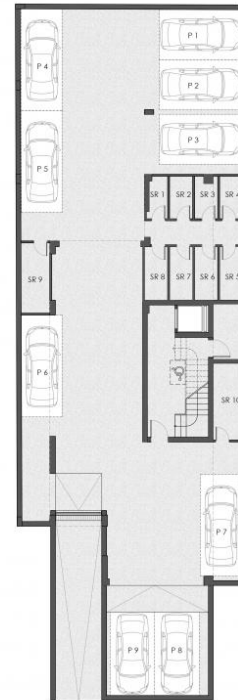
### **Amenities**

- Airport 26.8 km
- School 0.45 km
- University 10.7 km
- Beach 3.71 km
- Hospital 2.7 km
- Shops 0.29 km



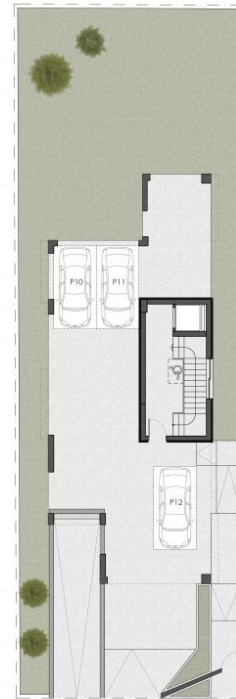
**Location**  
South, Glyfada

ATTIKIS 35, GLYFADA



ATTIKIS Str  
BASEMENT

ATTIKIS 35, GLYFADA



ATTIKIS Str  
GROUND FLOOR

ATTIKIS 35, GLYFADA



ATTIKIS Str  
FIRST LEVEL

ATTIKIS 35, GLYFADA



ATTIKIS 35r  
SECOND AND THIRD LEVEL



ATTIKIS 35, GLYFADA



ATTIKIS Str  
FOURTH LEVEL

ATTIKIS 35, GLYFADA



ATTIKIS Str  
FIFTH LEVEL



| Unit Number | Level | Internal Area       | Balconies           | Bedrooms | Bathrooms | Parking | Storage | Status    |
|-------------|-------|---------------------|---------------------|----------|-----------|---------|---------|-----------|
| 1.1         | 1     | 49m <sup>2</sup>    | 13.4m <sup>2</sup>  | 1        | 1         | Yes     | No      | Sold      |
| 1.3         | 1     | 49m <sup>2</sup>    | 17.8m <sup>2</sup>  | 1        | 1         | No      | Yes     | Available |
| 1.2         | 1     | 49m <sup>2</sup>    | 15.39m <sup>2</sup> | 1        | 1         | Yes     | Yes     | Available |
| 2.3         | 2     | 47m <sup>2</sup>    | 16.9m <sup>2</sup>  | 1        | 1         | Yes     | Yes     | Sold      |
| 2.1         | 2     | 47m <sup>2</sup>    | 17.3m <sup>2</sup>  | 1        | 1         | Yes     | No      | Sold      |
| 2.2         | 2     | 47m <sup>2</sup>    | 15.39m <sup>2</sup> | 1        | 1         | Yes     | Yes     | Sold      |
| 3.2         | 3     | 47m <sup>2</sup>    | 15.39m <sup>2</sup> | 1        | 1         | Yes     | Yes     | Sold      |
| 3.1         | 3     | 47m <sup>2</sup>    | 17.3m <sup>2</sup>  | 1        | 1         | Yes     | No      | Sold      |
| 3.3         | 3     | 47m <sup>2</sup>    | 16.9m <sup>2</sup>  | 1        | 1         | Yes     | Yes     | Sold      |
| M2          | 4     | 51.43m <sup>2</sup> | 15.39m <sup>2</sup> | 1        | 2         | Yes     | Yes     | Available |
| M3          | 4     | 56.55m <sup>2</sup> | 9.09m <sup>2</sup>  | 1        | 2         | Yes     | Yes     | Available |
| M4          | 4     | 56.1m <sup>2</sup>  | 8.38m <sup>2</sup>  | 1        | 2         | Yes     | Yes     | Available |



| Unit Number | Level | Internal Area      | Balconies          | Bedrooms | Bathrooms | Parking | Storage | Status    |
|-------------|-------|--------------------|--------------------|----------|-----------|---------|---------|-----------|
| M1          | 4     | 56.1m <sup>2</sup> | 23.2m <sup>2</sup> | 1        | 2         | No      | Yes     | Available |





## From A to Zafido

### Quality Dertemines Everything !

For clients investing in Zafido, what matters is the quality of the property as well as its location and design. Our projects are done by experienced and well recognized architects and engineers.

**30+**

EXPERIENCE

**250+**

EMPLOYEES

**500M+**

PROPERTY PORTIFOLIO

### Who we are

Located in the heart of the southern suburbs of Athens, we service the surrounding areas of Athens as well as regions outside of Attica. Integrity, trust and consistency are the foundation of our core values.

