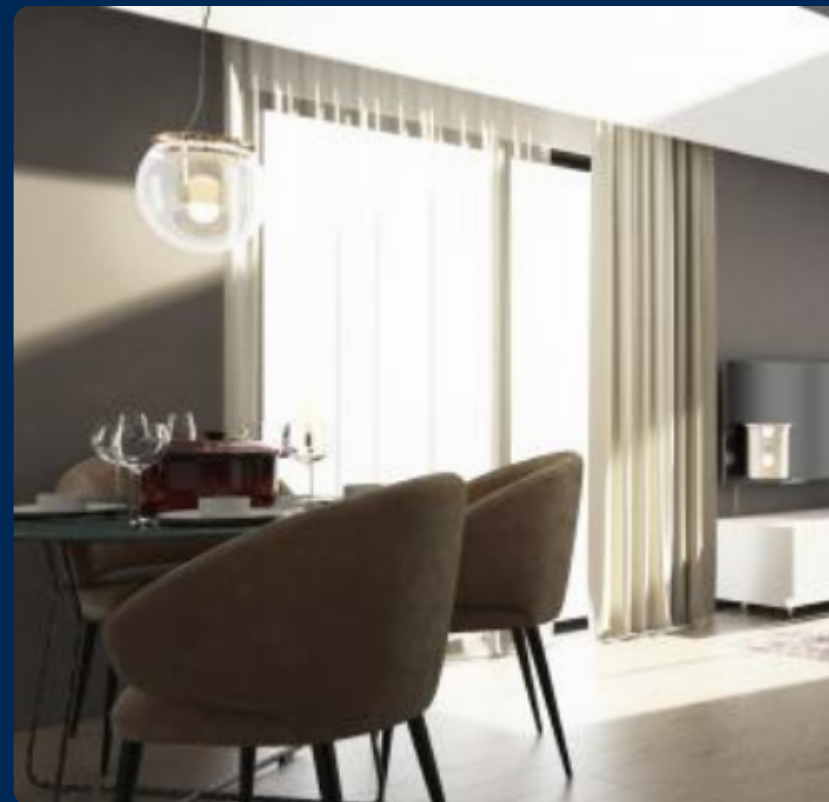




AG. DIMITRIOS - AG. ATHANASIOU 37 AND PREVEZIS 33

South, Agios Dimitrios



Project Description

South, Agios Dimitrios

Built in an enviable part of an increasingly popular residential area, this exclusive complex presents 34 luxury apartments with Energy Efficiency A+. The structure consists of 3 prominent constructions erected alongside each other encompassing the huge plot of land. The building composes of 2 impressive six-storey structures on either side with a striking three storey in the middle with a magnificent roof top garden and pool accessible to all apartments. The entrance of the complex is adorned with serene greenery adjacent to the vast common area that harmoniously unifies both external landscape and construction beautifully.



**Energy Efficiency A+ / Common
Swimming Pool / Roof Garden Area
/Double Glazed Windows /Entrance
Gate**

Property Features

- Elevator
- Storage Space
- Common Swimming Pool
- Floors Building

Amenities

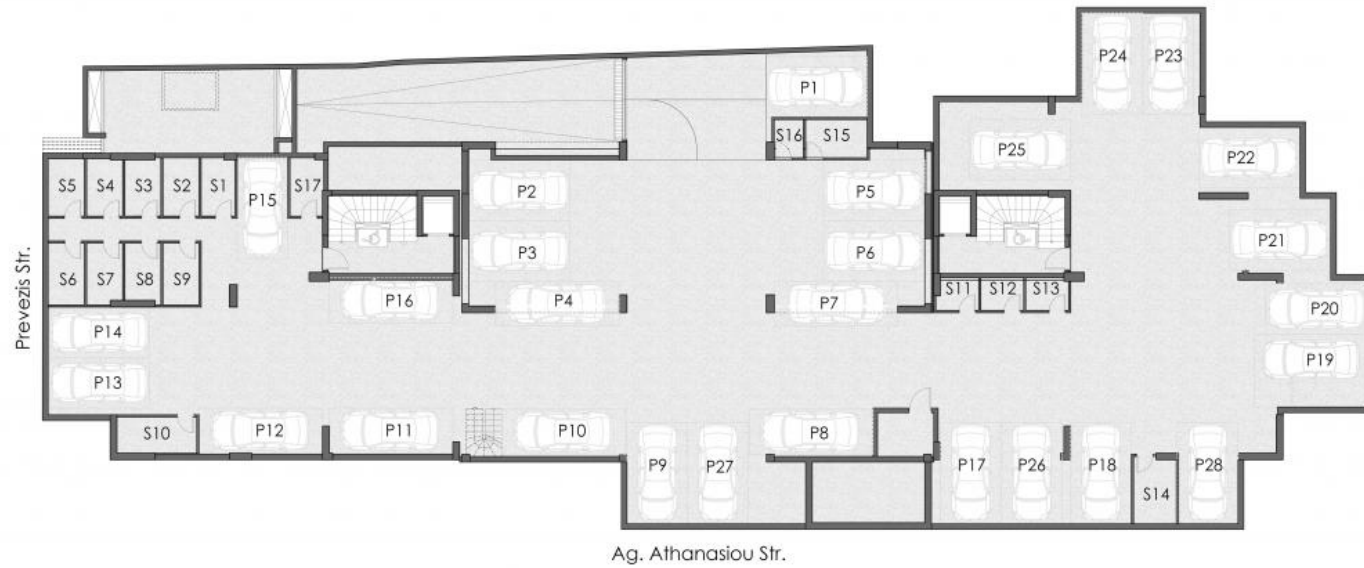
- Airport 35 km
- School 0.24 km
- University 2 km
- Beach 3.2 km
- Hospital 5 km
- Shops 0.07 km



Location

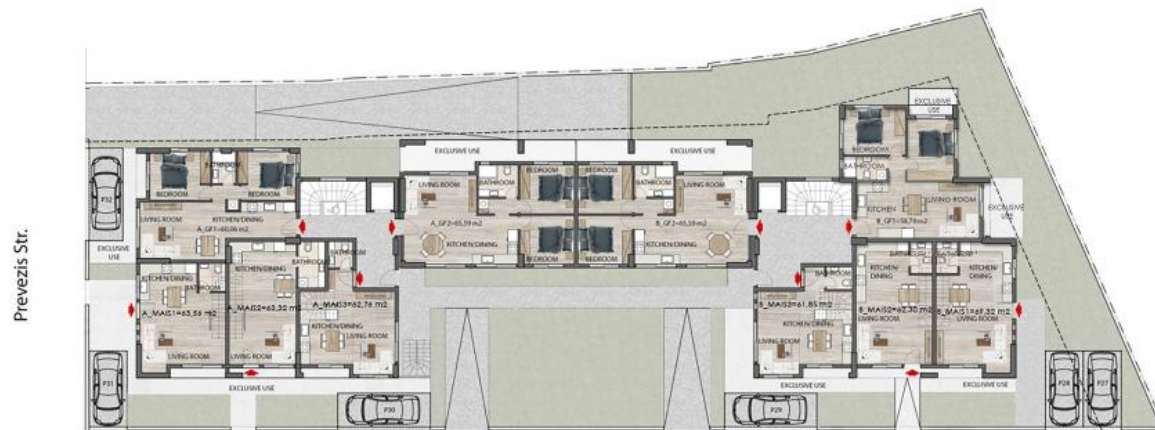
South, Agios Dimitrios

Ag. Athanasiou & Prevezis, Ag. Dimitrios



Basement

Ag. Athanasiou & Prevezis, Ag. Dimitrios



Ag. Athanasiou Str.

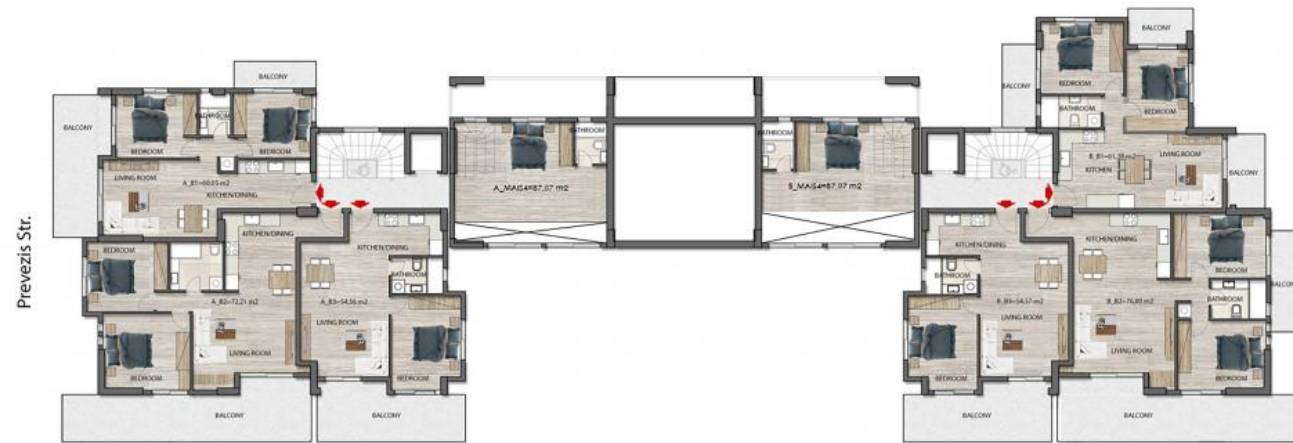
Groundfloor

Ag. Athanasiou & Prevezis, Ag. Dimitrios



First Floor

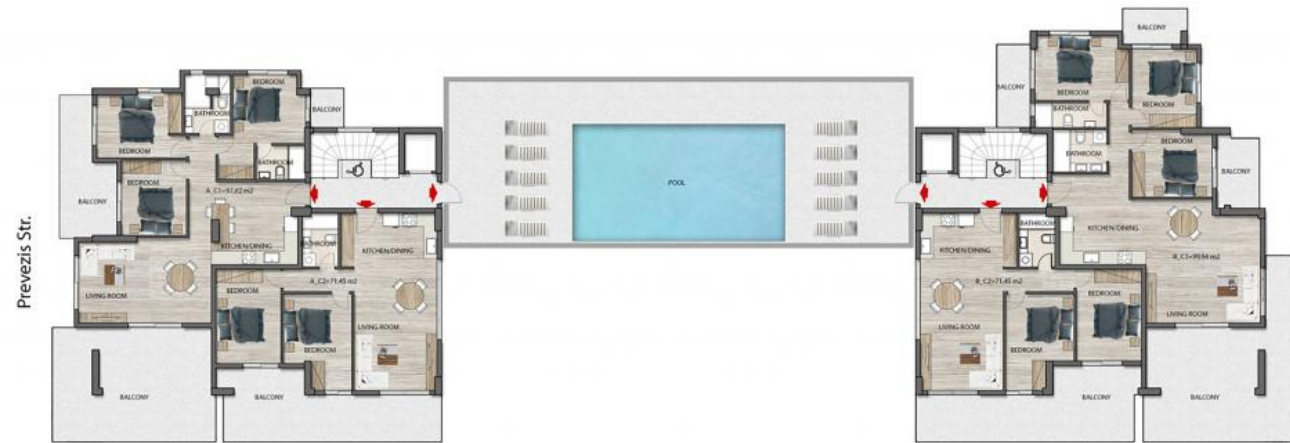
Ag. Athanasiou & Prevezis, Ag. Dimitrios



Ag. Athanasiou Str.

Second Floor

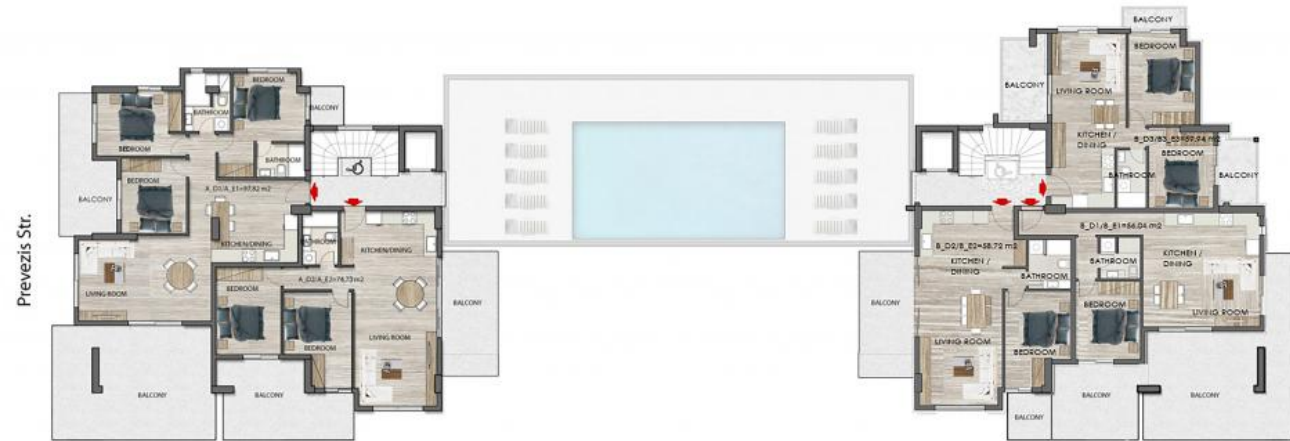
Ag. Athanasiou & Prevezis, Ag. Dimitrios



Ag. Athanasiou Str.

Third Floor

Ag. Athanasiou & Prevezis, Ag. Dimitrios



Prevezis Str.

Ag. Athanasiou Str.

Fourth / Fifth Floor





Unit Number	Level	Internal Area	Balconies	Bedrooms	Bathrooms	Parking	Storage	Status
A Mais 3	0	62.76m ²	12.93m ²	1	2	Yes	No	Sold
B Mais 1	0	69.32m ²	15.51m ²	1	2	Yes	No	Sold
B Mais 3	0	61.85m ²	20.4m ²	1	2	Yes	No	Sold
A Mais 2	0	63.32m ²	14.28m ²	1	2	Yes	No	Sold
Bgf2	0	65.59m ²	15.64m ²	2	1	Yes	No	Sold
Agf2	0	65.59m ²	15.64m ²	2	1	Yes	No	Sold
A Mais 1	0	63.56m ²	33.5m ²	1	2	Yes	No	Sold
Agf1	0	60.06m ²	9.23m ²	2	1	Yes	No	Sold
Bgf1	0	58.79m ²	12.91m ²	2	1	Yes	No	Sold
B Mais 2	0	62.3m ²	16.15m ²	1	2	Yes	No	Sold
Ba1	1	61.38m ²	14.12m ²	2	1	Yes	No	Sold
A Mais 4	1	87.07m ²	40.14m ²	2	2	Yes	Yes	Available

Unit Number	Level	Internal Area	Balconies	Bedrooms	Bathrooms	Parking	Storage	Status
B Mais 4	1	87.93m ²	40.14m ²	2	2	Yes	Yes	Available
Aa1	1	60.06m ²	17.74m ²	2	1	Yes	No	Sold
Ab3	2	54.56m ²	14.54m ²	1	1	Yes	No	Sold
Ab1	2	60.05m ²	17.67m ²	2	1	Yes	No	Sold
Bb3	2	54.57m ²	11.9m ²	1	1	Yes	No	Sold
Ab2	2	72.21m ²	23.45m ²	2	1	Yes	Yes	Sold
Bb2	2	76.8m ²	26.01m ²	2	1	Yes	Yes	Sold
Bb1	2	61.38m ²	14.12m ²	2	1	Yes	No	Sold
Ac1	3	97.82m ²	50.73m ²	3	2	Yes	Yes	Available
Bc2	3	71.45m ²	20.95m ²	2	1	Yes	Yes	Sold
Bc1	3	99.85m ²	54.19m ²	3	2	Yes	Yes	Available
Ac2	3	71.45m ²	24.93m ²	2	2	Yes	Yes	Sold

Unit Number	Level	Internal Area	Balconies	Bedrooms	Bathrooms	Parking	Storage	Status
Bd2	4	58.72m ²	17.88m ²	1	1	Yes	Yes	Sold
Bd3	4	59.94m ²	15.73m ²	2	1	Yes	Yes	Sold
Ad1	4	97.82m ²	50.73m ²	3	2	Yes	Yes	Available
Ad2	4	74.73m ²	31.45m ²	2	2	Yes	Yes	Sold
Bd1	4	56.04m ²	49.28m ²	1	1	Yes	No	Sold
Be1	5	56.04m ²	49.28m ²	1	1	Yes	Yes	Sold
Ae2	5	74.73m ²	31.45m ²	2	2	Yes	Yes	Sold
Be2	5	58.72m ²	17.88m ²	1	1	Yes	Yes	Sold
Be3	5	59.94m ²	15.73m ²	2	1	Yes	Yes	Sold
Ae1	5	97.82m ²	50.73m ²	3	2	Yes	Yes	Available

From A to Zafido

Quality Determines Everything !

For clients investing in Zafido, what matters is the quality of the property as well as its location and design. Our projects are done by experienced and well recognized architects and engineers.

30+

EXPERIENCE

250+

EMPLOYEES

500M+

PROPERTY PORTIFOLIO

Who we are

Located in the heart of the southern suburbs of Athens, we service the surrounding areas of Athens as well as regions outside of Attica. Integrity, trust and consistency are the foundation of our core values.