




## NEA IONIA - SMYRNIS 2

North, Nea Ionia



 Alex. Panagouli 17 16675 Glyfada Greece

 +30 210 89 43 809

 [www.zafido.gr](http://www.zafido.gr)

 [athens@zafido.gr](mailto:athens@zafido.gr)



## Project Description

### North, Nea Ionia

The building is located north of Athens in one of the most favoured and sought-after areas adjacent to one of the largest landscapes/woodlands whilst in the opposite direction the center of Nea Ionia can be found. The structure evolves into three floors, having three of the building's frontal features facing the street hence providing ample lighting and ventilation throughout the day. The building diversity is accentuated in its unique design from the recesses that create volume, the differing sized balconies situated around the perimeter of the construction to the partitions and sun protection systems incorporated on the exterior of the building resulting in a refined and elegant appearance.



### Property Features

- Elevator
- Floors Building

### Amenities


- Airport 31.4 km
- School 0.5 km
- University 6.7 km
- Beach 12.58 km
- Hospital 7.82 km
- Shops 0.16 km




## Location

North, Nea Ionia



 Alex. Panagouli 17 16675 Glyfada Greece

 +30 210 89 43 809

 [www.zafido.gr](http://www.zafido.gr)

 [athens@zafido.gr](mailto:athens@zafido.gr)



SMIRNIS 2 & DOUKARI\_ N. IONIA



Groundfloor - Apt 12 - 82.88 m<sup>2</sup>

SMIRNIS 2 & DOUKARI \_ N. IONIA



1st Floor - Apt A1 - 66.82 m2





SMIRNIS 2 & DOUKARI\_ N. IONIA



1st Floor - Apt A3 - 62.87 m2

SMIRNIS 2 & DOUKARI\_ N. IONIA

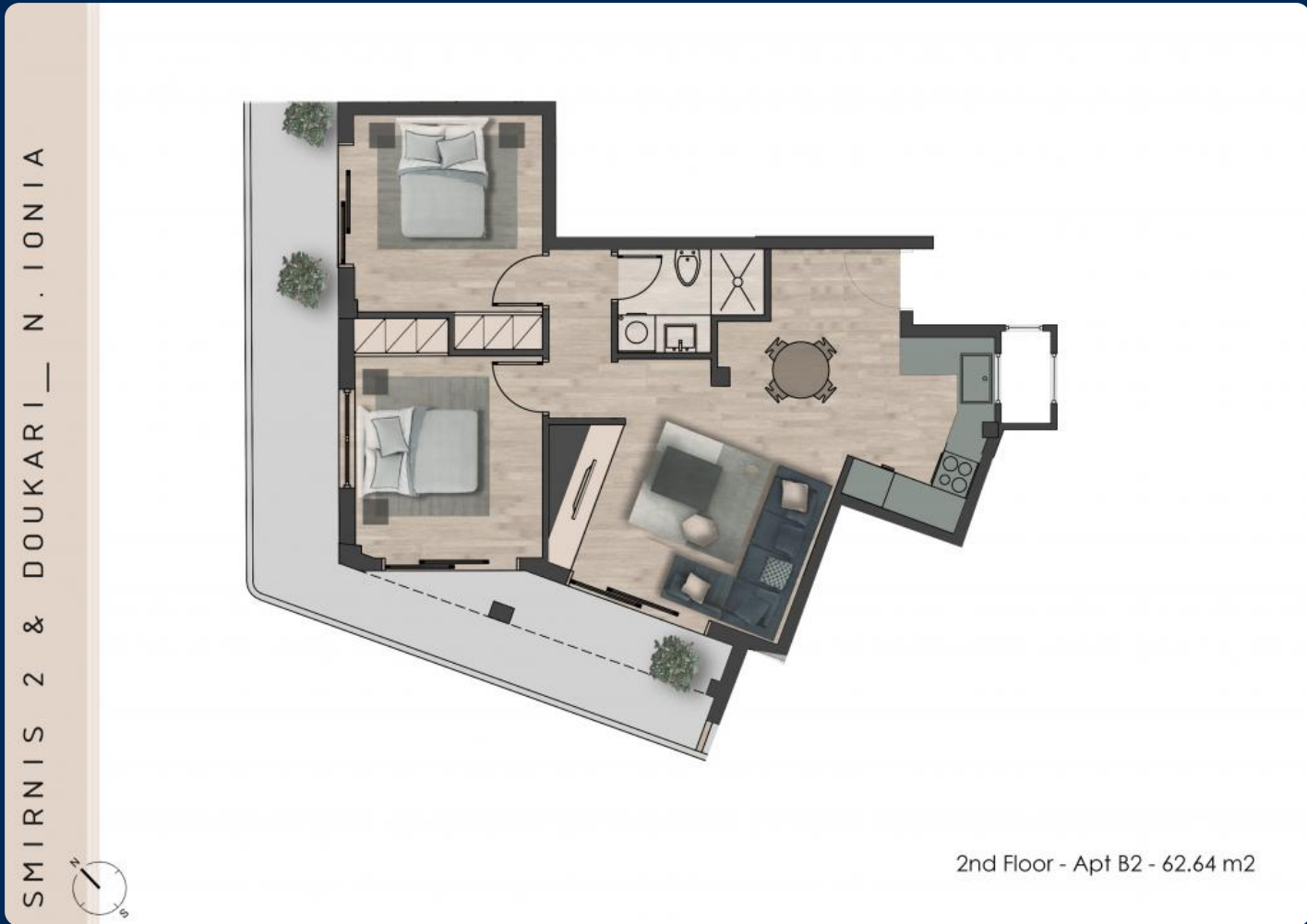


1st Floor - Apt A4 - 56.66 m2

SMIRNIS 2 & DOUKARI \_ N. IONIA



2nd Floor - Apt B1 - 66.88 m2



SMIRNIS 2 & DOUKARI\_ N. IONIA



2nd Floor - Apt B3 - 62.81 m2

SMIRNIS 2 & DOUKARI\_ N. IONIA



2nd Floor - Apt B4 - 58.64 m2







| Unit Number | Level | Internal Area       | Balconies          | Bedrooms | Bathrooms | Parking | Storage | Status    |
|-------------|-------|---------------------|--------------------|----------|-----------|---------|---------|-----------|
| I2          | 0     | 82.88m <sup>2</sup> | 17.3m <sup>2</sup> | 2        | 2         | No      | No      | Available |
| I1          | 0     | 92.15m <sup>2</sup> | 19.2m <sup>2</sup> | 3        | 2         | No      | No      | Available |
| A3          | 1     | 62.87m <sup>2</sup> | 17.4m <sup>2</sup> | 2        | 1         | No      | No      | Sold      |
| A1          | 1     | 66.82m <sup>2</sup> | 12.2m <sup>2</sup> | 2        | 1         | No      | No      | Sold      |
| A2          | 1     | 64.21m <sup>2</sup> | 20.6m <sup>2</sup> | 2        | 1         | No      | No      | Sold      |
| A4          | 1     | 56.66m <sup>2</sup> | 7.8m <sup>2</sup>  | 1        | 1         | No      | No      | Sold      |
| B1          | 2     | 66.88m <sup>2</sup> | 12.2m <sup>2</sup> | 2        | 1         | No      | No      | Sold      |
| B2          | 2     | 62.64m <sup>2</sup> | 22.1m <sup>2</sup> | 2        | 1         | No      | No      | Sold      |
| B4          | 2     | 58.64m <sup>2</sup> | 7.8m <sup>2</sup>  | 1        | 1         | No      | No      | Available |
| B3          | 2     | 62.81m <sup>2</sup> | 17.4m <sup>2</sup> | 2        | 1         | No      | No      | Sold      |
| C1          | 3     | 41.55m <sup>2</sup> | 135m <sup>2</sup>  | 1        | 1         | Yes     | No      | Sold      |

## From A to Zafido

### Quality Dertemines Everything !

For clients investing in Zafido, what matters is the quality of the property as well as its location and design. Our projects are done by experienced and well recognized architects and engineers.

**30+**

EXPERIENCE

**250+**

EMPLOYEES

**500M+**

PROPERTY PORTIFOLIO

### Who we are

Located in the heart of the southern suburbs of Athens, we service the surrounding areas of Athens as well as regions outside of Attica. Integrity, trust and consistency are the foundation of our core values.